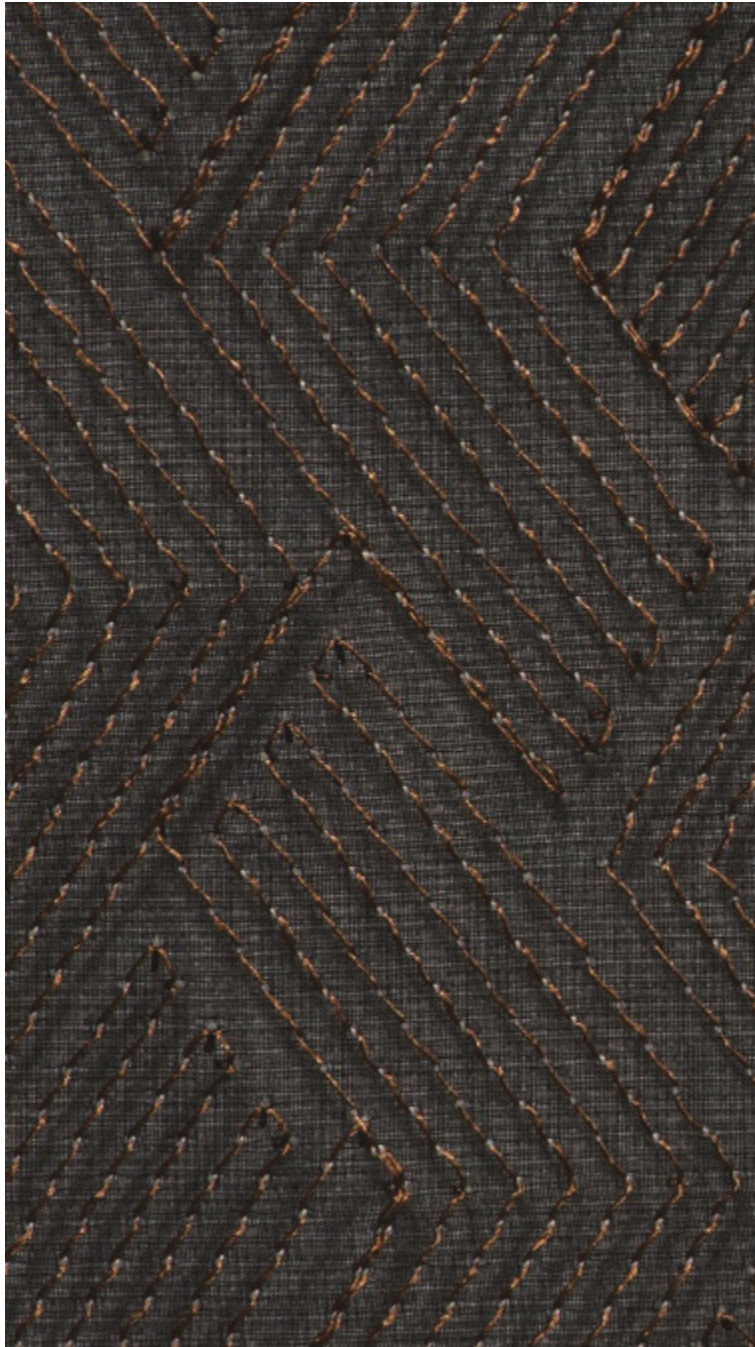


**GALON - ACAJOU \***

1353-05



Voile grande largeur délicatement brodé d'un motif lumineux et graphique tel une vannerie transparente. Jeu de contrastes, d'ombres et de lumières.

---

Collection	COLLECTION 20
------------	---------------

---

Marque	LELIÈVRE PARIS CONTRACT
--------	-------------------------

---

## FICHE TECHNIQUE

---

Type	Voilage
------	---------

---

Composition	Polyester FR 70% - Polyester TREVI .CS 30%
-------------	--

---

---

Largeur	265 cm
---------	--------

---

---

Coupe au raccord	Non
------------------	-----

---

---

Raccord vertical	8 cm
------------------	------

---

---

Raccord horizontal	12 cm
--------------------	-------

---

---

Raccord sauté	Non
---------------	-----

---

---

Entretien	   
-----------	---

---

---

Utilisations	 
--------------	---

---

---

Poids ML	165 g
----------	-------

---

---

Code feu	M1 - IMO PART 7
----------	-----------------

---

# LELIEVRE

PARIS

## Coloris disponibles



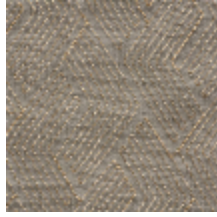
1353-01

**GALON - BLANC \***



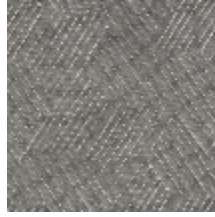
1353-02

**GALON - EMAIL \***



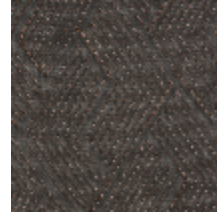
1353-03

**GALON - PYRITE \***



1353-04

**GALON - ARGENT  
\***



1353-05

**GALON -  
ACAJOU \***

**GALON - ACAJOU \***

1353-05

