

COSTA - OPALINE

1484-18

LELIEVRE

PARIS

COSTA est un tissu 100% lin à usage mixte doté d'une superbe profondeur de gamme de 35 couleurs, subtiles, riches, avec des tonalités phares comme des naturels et des poudrés, des coloris plus profonds et des colorations chaudes d'épices qui donnent des envies de voyage. Cette qualité de lin surprendra tous les adeptes de cette fibre naturelle qui apporte un superbe tombé et une main souple. Toute la gamme se coordonne parfaitement avec l'ensemble de la collection Résonance.



Collection	RESONANCE
------------	-----------

Marque	LELIEVRE
--------	----------


FICHE TECHNIQUE

Composition	Lin 100%
-------------	----------

Largeur	145 cm
---------	--------

Coupe au raccord	Non
------------------	-----

Raccord sauté	Non
---------------	-----

Entretien	   
-----------	---

Utilisations	  
--------------	---

Test Martindale	30 000 T
-----------------	----------

Poids ML	700 g
----------	-------

Code feu	EN1021-1&2
----------	------------

LELIEVRE

PARIS



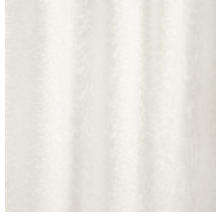
LELIEVRE

PARIS

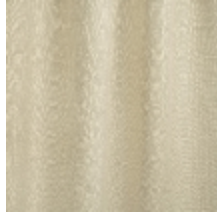
Coloris disponibles



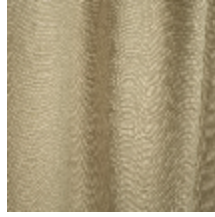
1484-01
COSTA - BLANC



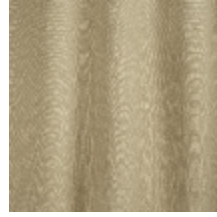
1484-02
COSTA - ÉCRU



1484-03
COSTA - BEIGE



1484-04
COSTA - LIN



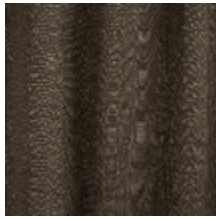
1484-05
COSTA - SAVANE



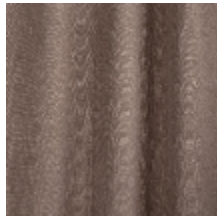
1484-06
COSTA - CAMEL



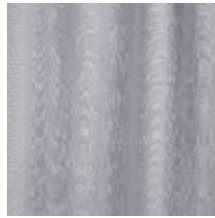
1484-07
COSTA - CHATAIN



1484-08
COSTA - TAUPE



1484-09
COSTA - TOURTERELLE



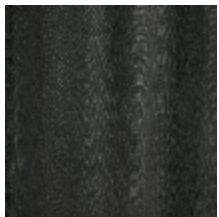
1484-10
COSTA - GLYCINE



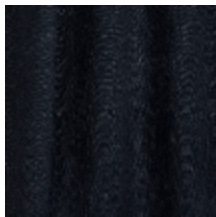
1484-11
COSTA - PERLE



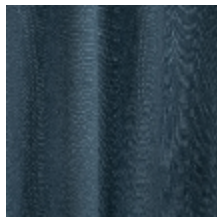
1484-12
COSTA - SOURIS



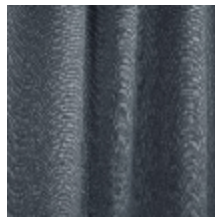
1484-13
COSTA - ANTHRACITE



1484-14
COSTA - MARINE



1484-15
COSTA - OCÉAN



1484-16
COSTA - ORAGE



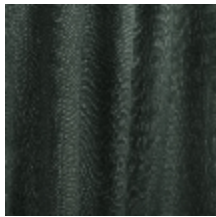
1484-17
COSTA - ACQUA



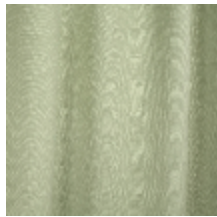
1484-18
COSTA - OPALINE



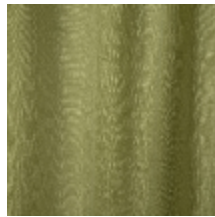
1484-19
COSTA - AGAVE



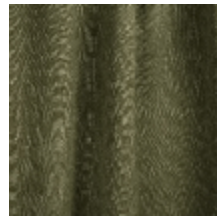
1484-20
COSTA - CEDRE



1484-21
COSTA - CELADON



1484-22
COSTA - AMANDE



1484-23
COSTA - KAKI



1484-24
COSTA - BRONZE

LELIEVRE

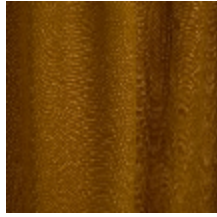
PARIS



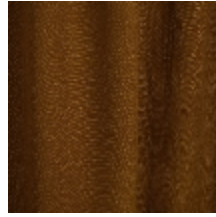
1484-25
COSTA - POLLEN



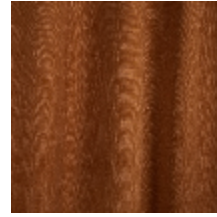
1484-26
COSTA - GENTIANE



1484-27
COSTA - CURRY



1484-28
COSTA - OCRE



1484-29
COSTA - TERRACOTTA



1484-30
COSTA - BRIQUE



1484-31
COSTA - POUDRE



1484-32
COSTA - VIEUX ROSE



1484-33
COSTA - BLUSH



1484-34
COSTA - TOMETTE



1484-35
COSTA - BORDEAUX

LELIEVRE

PARIS

COSTA - OPALINE

1484-18

