

**FONTENAY - MACARON**

1679-14



Sobriété et raffinement caractérisent ce beau gourgouran soie et coton. Brillance et matité alternent dans un rythme élégant de satin et d ottoman souligné de fins filets ciselés. Une palette de 19 coloris assortis à tous grands classiques, pour la tenture, le rideau ou le petit siège.

---

Collection	PATRIMOINE
------------	------------

---

Marque	TASSINARI & CHATEL
--------	--------------------

---

## FICHE TECHNIQUE

---

Composition	Coton 57% - Soie 43%
-------------	----------------------

---

Largeur	140 cm
---------	--------


---

Coupe au raccord	Non
------------------	-----

---

Raccord sauté	Non
---------------	-----

---

Entretien	   
-----------	---

---

Utilisations	   
--------------	---

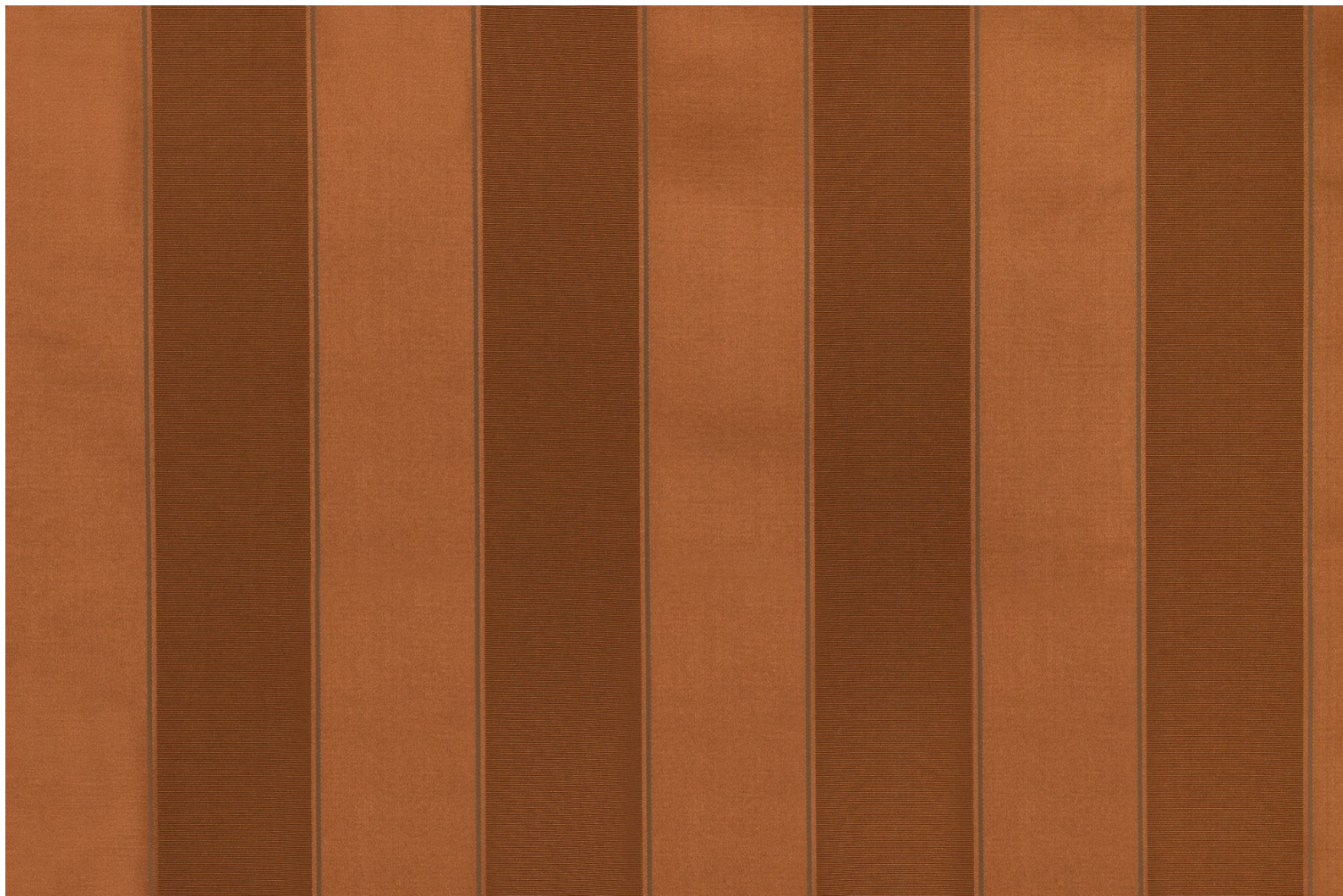
---

Poids ML	240 g
----------	-------

---

# LELIEVRE

PARIS



[lelievreparis.com](http://lelievreparis.com)  
[contact@lelievreparis.com](mailto:contact@lelievreparis.com)

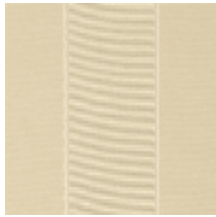
# LELIEVRE

PARIS

## Coloris disponibles



1679-01  
**FONTENAY -  
ALBATRE**



1679-02  
**FONTENAY -  
IVOIRE**



1679-03  
**FONTENAY -  
PLATINE \***



1679-04  
**FONTENAY -  
CHAMPAGNE**



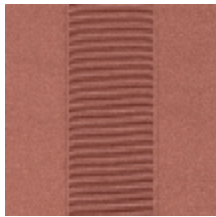
1679-06  
**FONTENAY -  
BOUTON D'OR**



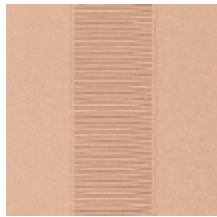
1679-07  
**FONTENAY -  
AMBRE**



1679-09  
**FONTENAY -  
RUBIS**



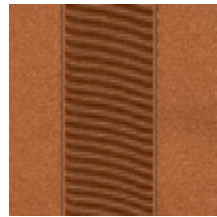
1679-10  
**FONTENAY -  
ROSE ANCIEN**



1679-11  
**FONTENAY -  
POUDRE**



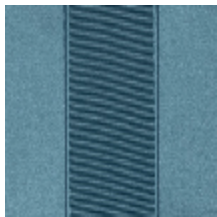
1679-12  
**FONTENAY -  
RAMIER**



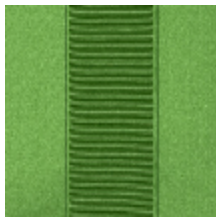
1679-14  
**FONTENAY -  
MACARON**



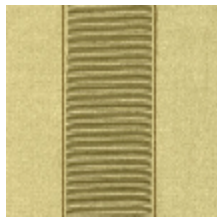
1679-15  
**FONTENAY -  
AMETHYSTE**



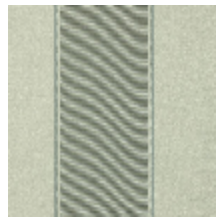
1679-16  
**FONTENAY -  
FAIENCE**



1679-17  
**FONTENAY -  
MYRTE**



1679-18  
**FONTENAY -  
AMANDE**



1679-19  
**FONTENAY -  
CELADON**

**FONTENAY - MACARON**

1679-14

