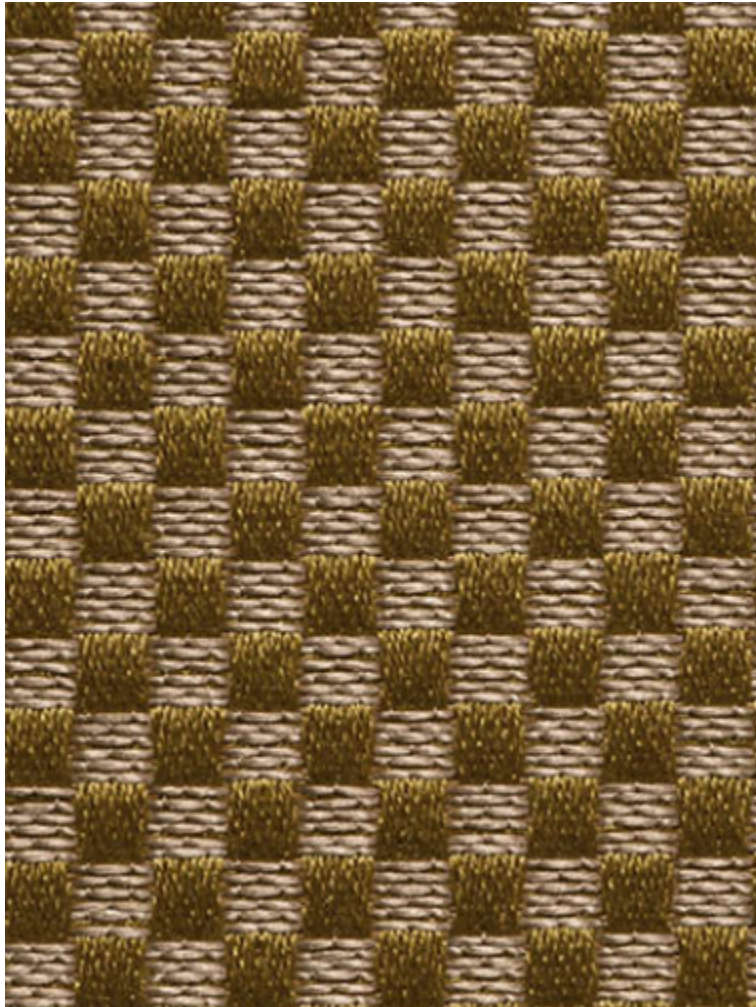


# LELIEVRE

PARIS

## DA VINCI - OR

1692-03



Tissé dans la même qualité que Leonardo dont est issu ce petit motif damier, Da Vinci coordonne subtilement avec chacun des coloris de cette brocatelle.

---

Collection PATRIMOINE

---

Marque TASSINARI & CHATEL

---

### FICHE TECHNIQUE


---

Composition Soie 57% - Lin 43%

Largeur 130 cm

Coupe au raccord Non

Raccord sauté Non

Entretien    

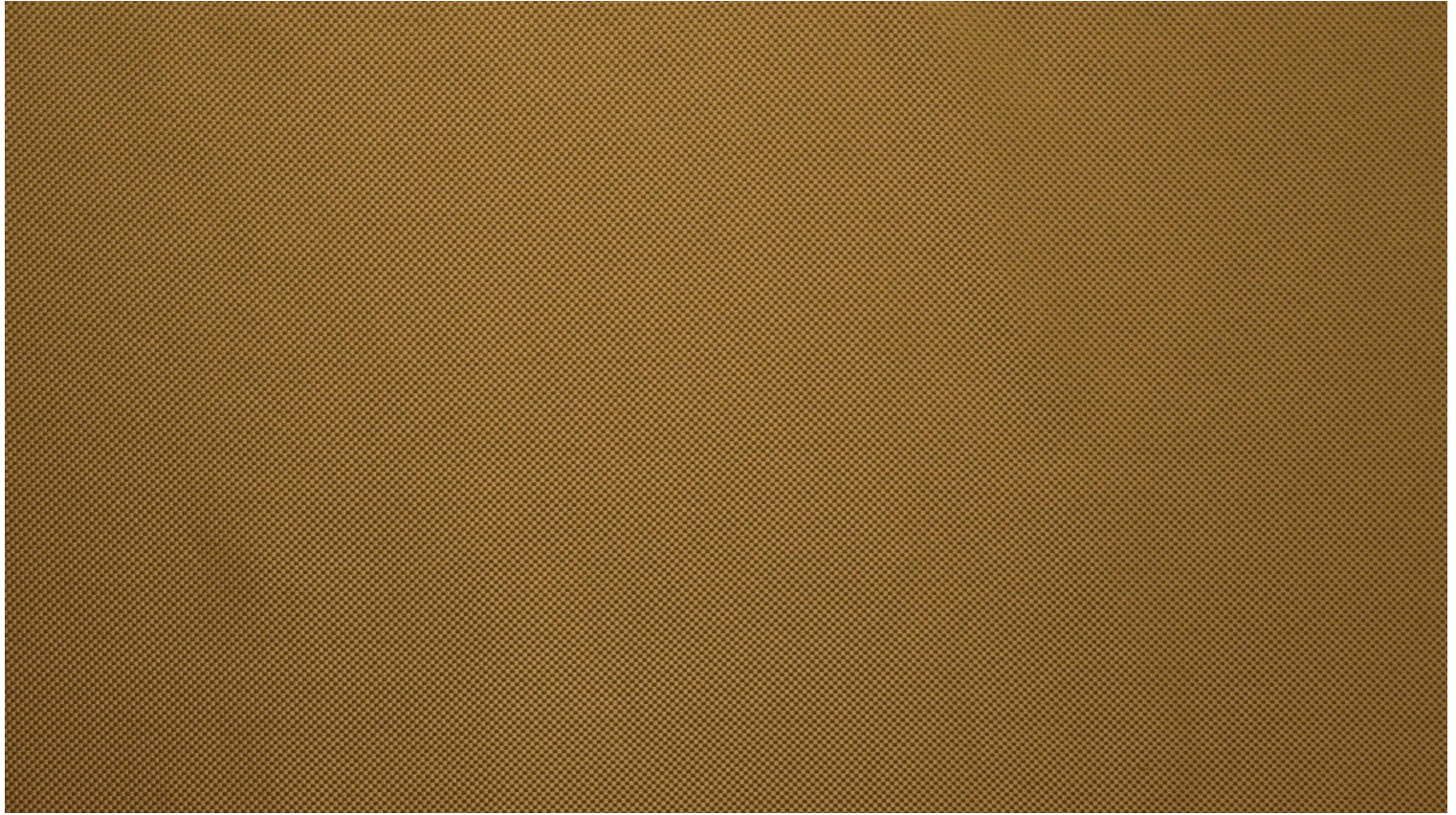
Utilisations    

Poids ML 350 g

---

# LELIEVRE

PARIS



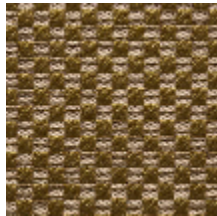
## Coloris disponibles



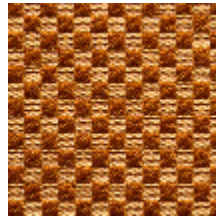
1692-01  
**DA VINCI -  
NATTIER**



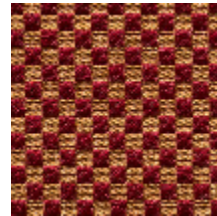
1692-02  
**DA VINCI - EMAIL**



1692-03  
**DA VINCI - OR**



1692-04  
**DA VINCI -  
ECAILLE**



1692-05  
**DA VINCI - RUBIS**



1692-06  
**DA VINCI -  
MYRTHE**

**DA VINCI - OR**

1692-03

