

MIROIR -POUDRE *








0239-24



Miroir est un satin en Trévira CS teint en pièce. Il est né de l'envie de perception, de noblesse, de couleurs douces, d'être proche de la mode car le satin est à la mode de brillance délicate, de raffinement féminin...Miroir a un toucher et un aspect d'un satin de soie et un tomber merveilleux pour la confection de rideaux, une élégance subtile pour la confection de couvre-lits, de coussins, voire un solidité à l'abrasion suffisante pour recouvrir un mobilier d'appoint.

Collection	COLLECTION 8
Marque	LELIÈVRE PARIS CONTRACT

FICHE TECHNIQUE

Type	Uni
Composition	Polyester TREVIRA CS 100%
Largeur	140 cm
Coupe au raccord	Non
Raccord sauté	Non
Entretien	  
Utilisations	   
Test Martindale	19 000 T
Poids ML	300 g
Code feu	MI - IMO PART 7&8

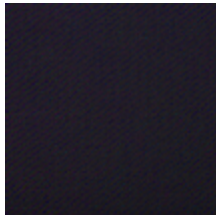
LELIEVRE

PARIS

Coloris disponibles



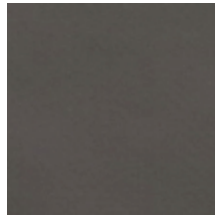
0239-01
MIROIR - CANARD
*



0239-02
MIROIR - NUIT *



0239-03
MIROIR - NOIR *



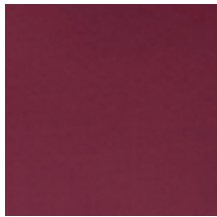
0239-04
MIROIR - CHOCOLAT *



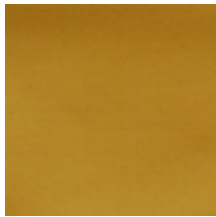
0239-05
MIROIR - POURPRE *



0239-06
MIROIR - GRENAT
*



0239-09
MIROIR - CYCLAMEN *



0239-12
MIROIR - AMBRE *



0239-13
MIROIR - SAFRAN
*



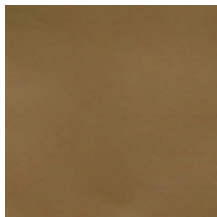
0239-14
MIROIR - OR *



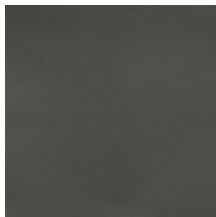
0239-15
MIROIR - CHARTREUSE *



0239-16
MIROIR - ABSINTHE *



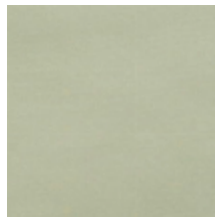
0239-17
MIROIR - HAVANE
*



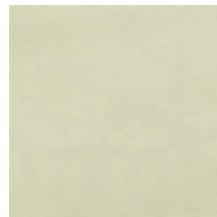
0239-18
MIROIR - ELEPHANT *



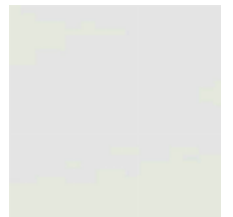
0239-19
MIROIR - MASTIC
*



0239-20
MIROIR - PLATINE
*



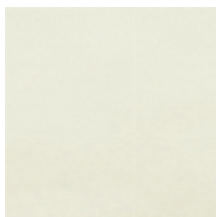
0239-21
MIROIR - CHANVRE *



0239-23
MIROIR - BLANC *



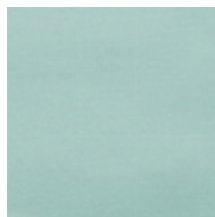
0239-24
MIROIR - POUDRE
*



0239-25
MIROIR - IVOIRE *



0239-26
MIROIR - BEIGE *



0239-28
MIROIR - CIEL *