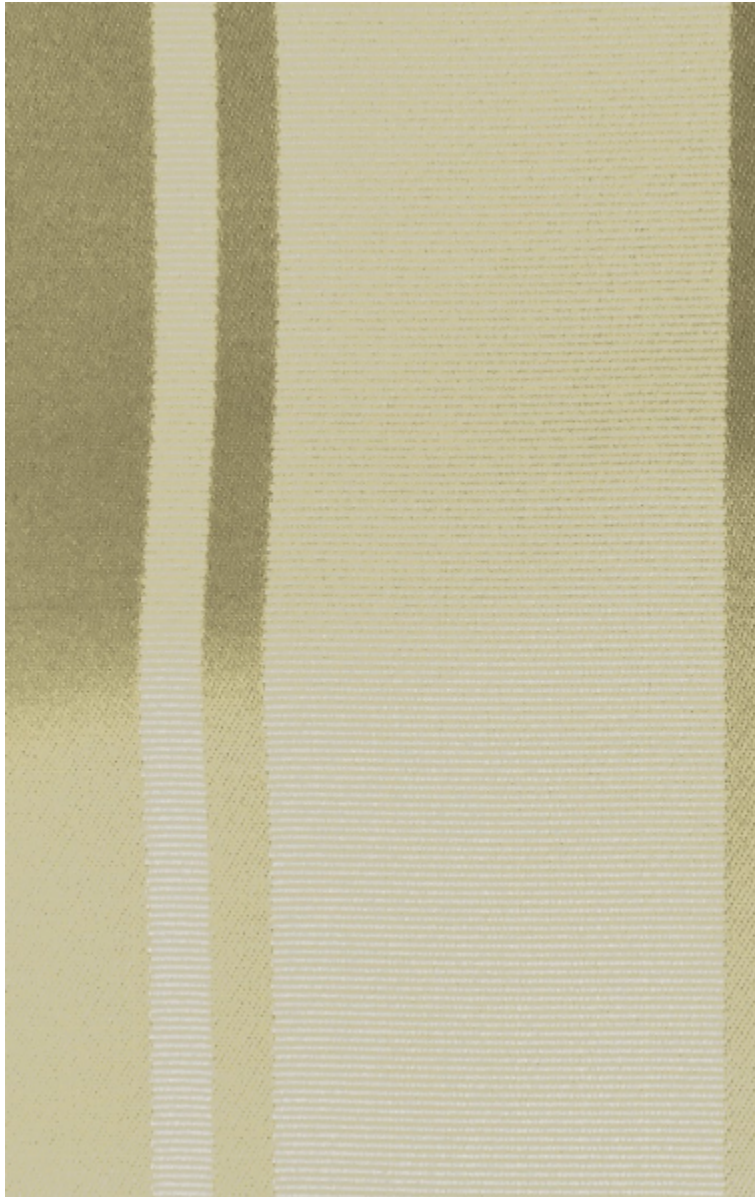


ARIA-IVOIRE

0265-01



Une nouvelle qualité de gourgouran. L'effet satin est en viscose; l'effet « gros de tours » est en coton; deux matières assemblées en harmonies bicolores. Une longue gamme de 26 doubles nuances construites pour se mêler avec la majorité de nos soieries classiques, qu'elles soient de chez Lelièvre ou de chez Tassinari & Chatel. Tantôt pastels, tantôt légèrement fruitées, ou même intenses; les harmonies évoluent parfois dans des contrastes de tons brûlés et profonds.

Marque	QUENIN
--------	--------

FICHE TECHNIQUE

Composition	Coton 72% - Viscose 28%
-------------	-------------------------

Largeur	140 cm
---------	--------

Coupe au raccord	Non
------------------	-----

Raccord sauté	Non
---------------	-----

Entretien	  
-----------	---

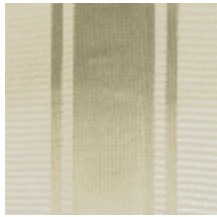
Utilisations	   
--------------	---

Poids ML	370 g
----------	-------

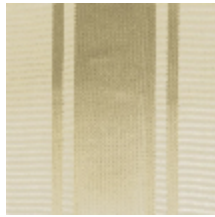
LELIEVRE

PARIS

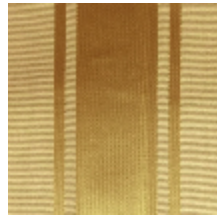
Coloris disponibles



0265-01
ARIA-IVOIRE



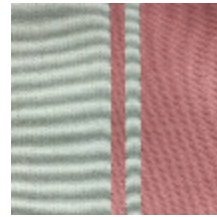
0265-02
**ARIA-
CHAMPAGNE**



0265-03
ARIA-OR



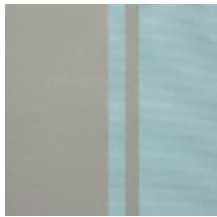
0265-05
ARIA-PARME



0265-06
ARIA-ROSE



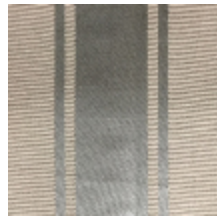
0265-07
ARIA-SAUGE



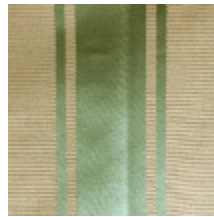
0265-09
ARIA-OPALE



0265-10
ARIA-NOISETTE



0265-11
ARIA-ARGENT



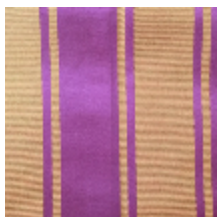
0265-13
ARIA-LIERRE



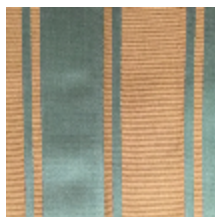
0265-15
ARIA-RUBIS *



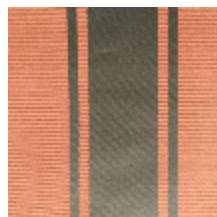
0265-16
ARIA-RUBICOND



0265-17
ARIA-CARDINAL
*



0265-19
ARIA-MAGNETITE
*



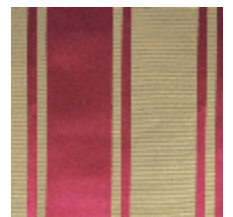
0265-20
ARIA-CARAMEL



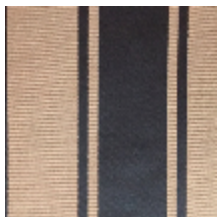
0265-21
ARIA-EMERAUDE



0265-22
ARIA-BENGALE



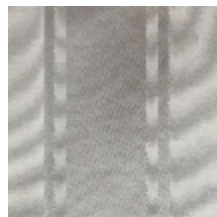
0265-23
ARIA-CRAMOISI



0265-24
ARIA-EBENE



0265-25
ARIA-POIVRE



0265-26
ARIA-NEIGE

ARIA-IVOIRE

0265-01

