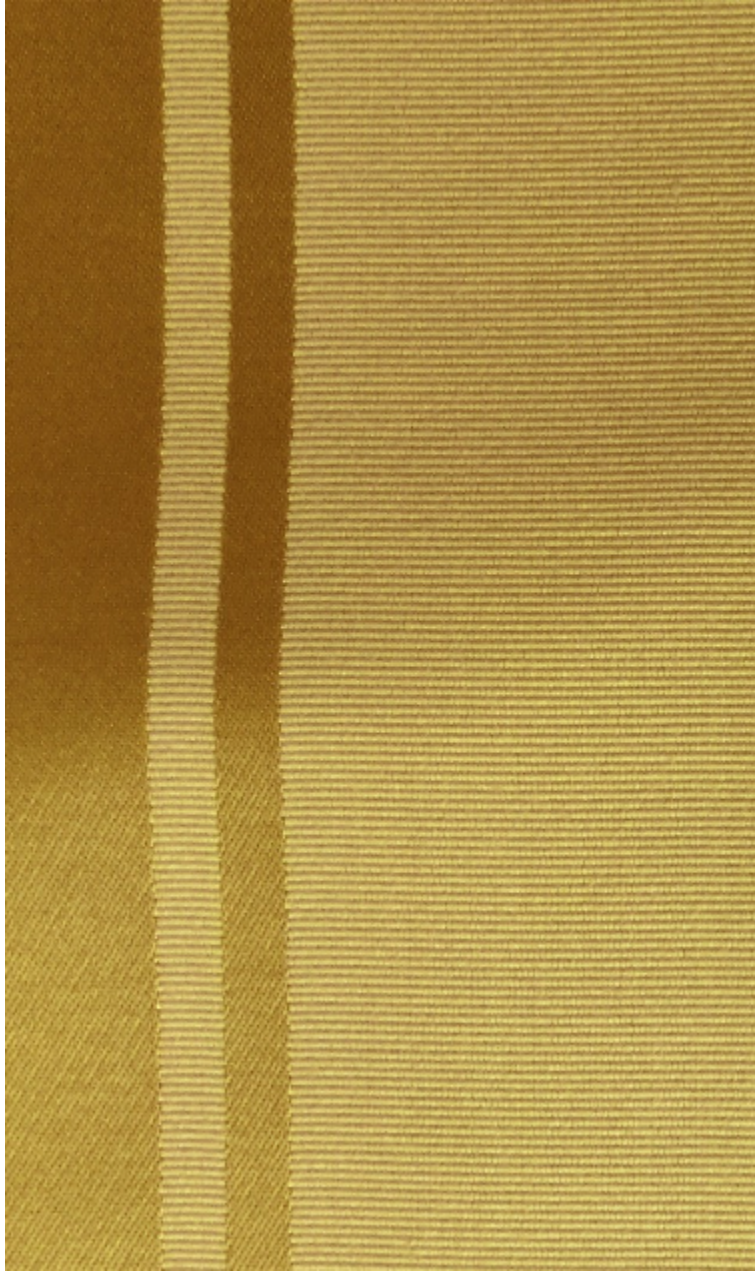


**ARIA-OR**

0265-03



Une nouvelle qualité de gourgouran. L'effet satin est en viscose; l'effet « gros de tours » est en coton; deux matières assemblées en harmonies bicolores. Une longue gamme de 26 doubles nuances construites pour se mêler avec la majorité de nos soieries classiques, qu'elles soient de chez Lelièvre ou de chez Tassinari & Chatel. Tantôt pastels, tantôt légèrement fruitées, ou même intenses; les harmonies évoluent parfois dans des contrastes de tons brûlés et profonds.

---

Marque	QUENIN
--------	--------

---

## FICHE TECHNIQUE

---

Type	Rayure
------	--------

---

Composition	Coton 72% - Viscose 28%
-------------	-------------------------

---

Largeur	130 cm
---------	--------

---

Coupe au raccord	Non
------------------	-----

---

Raccord sauté	Non
---------------	-----

---

Entretien	  
-----------	---

---

Utilisations	   
--------------	---

---

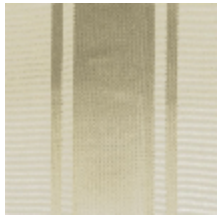
Poids ML	370 g
----------	-------

---

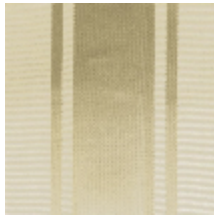
# LELIEVRE

PARIS

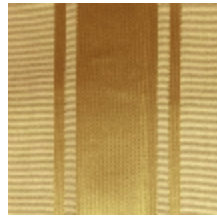
## Coloris disponibles



0265-01  
**ARIA-IVOIRE**



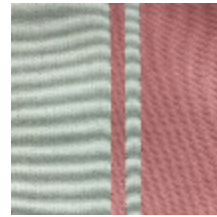
0265-02  
**ARIA-  
CHAMPAGNE**



0265-03  
**ARIA-OR**



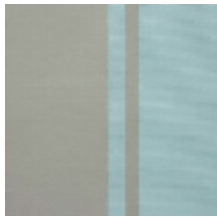
0265-05  
**ARIA-PARME**



0265-06  
**ARIA-ROSE**



0265-07  
**ARIA-SAUGE**



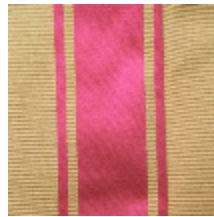
0265-09  
**ARIA-OPALE**



0265-11  
**ARIA-ARGENT**



0265-13  
**ARIA-LIERRE**



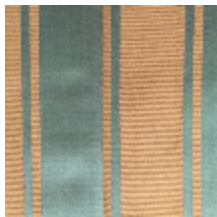
0265-15  
**ARIA-RUBIS \***



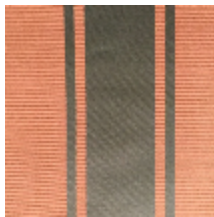
0265-16  
**ARIA-RUBICOND**



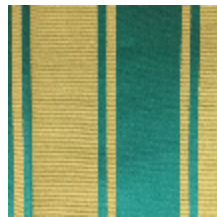
0265-17  
**ARIA-CARDINAL  
\***



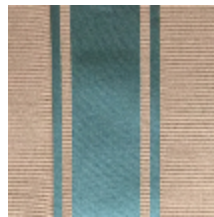
0265-19  
**ARIA-MAGNETITE  
\***



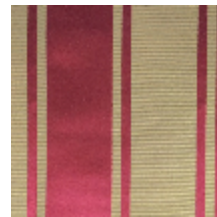
0265-20  
**ARIA-CARAMEL**



0265-21  
**ARIA-EMERAUDE**



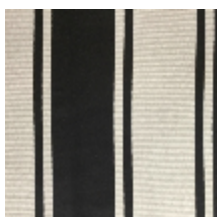
0265-22  
**ARIA-BENGALE**



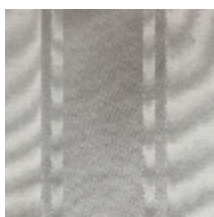
0265-23  
**ARIA-CRAMOISI**



0265-24  
**ARIA-EBENE**



0265-25  
**ARIA-POIVRE**



0265-26  
**ARIA-NEIGE**

# LELIEVRE

PARIS

**ARIA-OR**

0265-03

