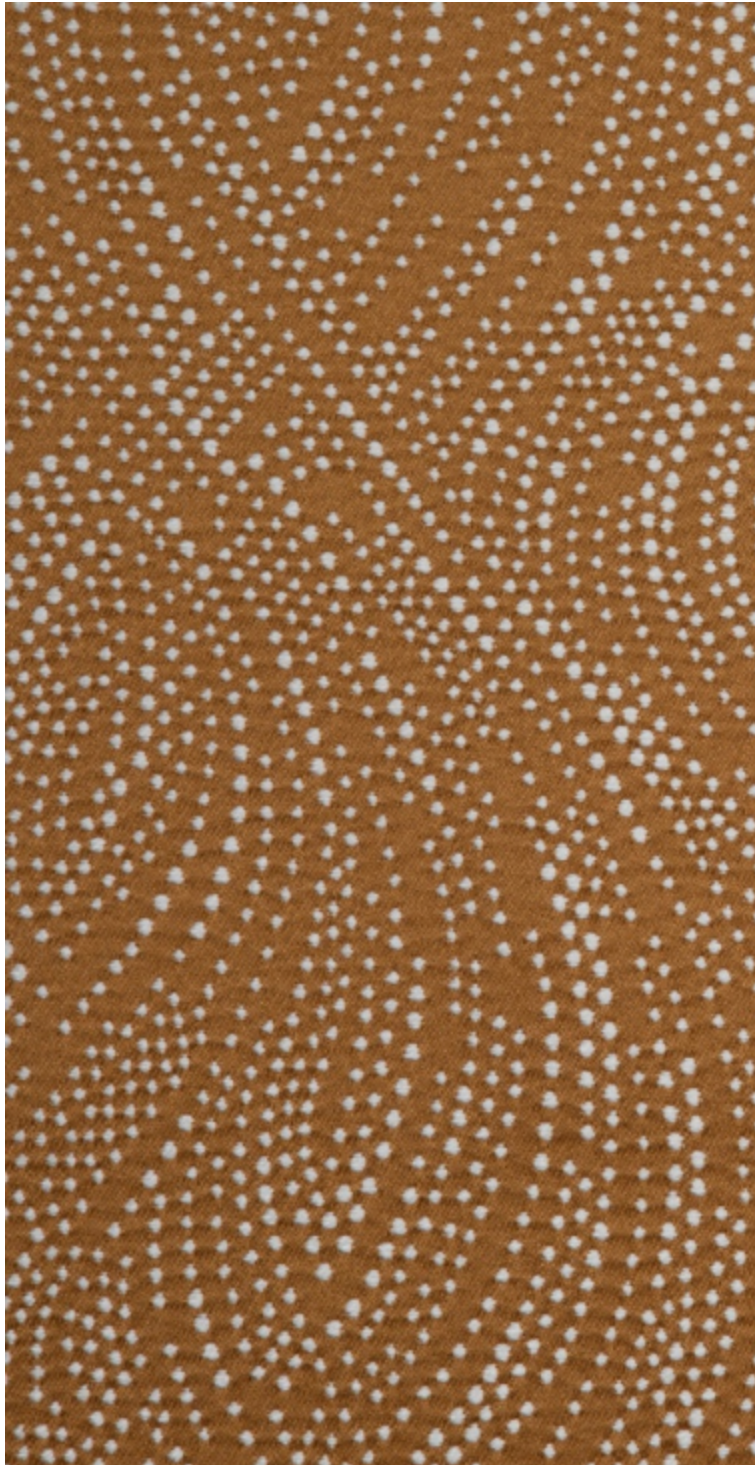


**CASCADE - GAZELLE**

3250-03



CASCADE est un jacquard au relief texturé, évoquant une pluie cristalline et un effet de perles qui glissent. Son motif vertical crée un ruissellement délicat sur un fond satiné, captant la lumière et sublimant les volumes. Idéal pour rideaux et sièges.

---

Collection	CONTRÉE SAUVAGE
------------	-----------------

---

Marque	LELIÈVRE PARIS CONTRACT
--------	-------------------------

---

## FICHE TECHNIQUE

---

Type	Rayure
------	--------

---

Composition	Polyester TREVIRA CS 100%
-------------	---------------------------

---

Largeur	147 cm
---------	--------

---

Coupe au raccord	Non
------------------	-----

---

Raccord vertical	36 cm
------------------	-------

---

Raccord horizontal	37 cm
--------------------	-------


---

Raccord sauté	Non
---------------	-----

---

Entretien	   
-----------	---

---

Utilisations	   
--------------	---

---

Test Martindale	40 000 T
-----------------	----------

---

Poids ML	610 g
----------	-------

---

Code feu	MI - EN1021-1&2
----------	-----------------

---

LELIEVRE

PARIS



# LELIEVRE

PARIS

## Coloris disponibles



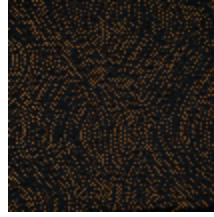
3250-01  
**CASCADE -  
NATUREL**



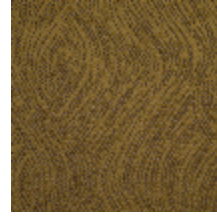
3250-02  
**CASCADE - BEIGE**



3250-03  
**CASCADE -  
GAZELLE**



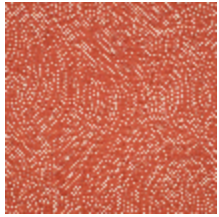
3250-04  
**CASCADE - BOISE**



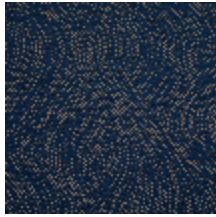
3250-05  
**CASCADE -  
BRONZE**



3250-06  
**CASCADE -  
GENTIANE**



3250-07  
**CASCADE -  
PAPRIKA**



3250-08  
**CASCADE -  
ENCRE**

**CASCADE - GAZELLE**

3250-03

# LELIEVRE

PARIS

# LELIEVRE

PARIS

