

LELIEVRE

PARIS

CABARET - POLLEN *









3436-06



La touche couture. Un faux uni en coton indispensable pour un décalage «fashion». Un clin d'oeil féminin avec une résille réinterprétée en jacquard et, la patte de la marque est confirmée. Réversible, 10 nuances proposent 20 coloris qui lient tous les tissus de cette 1ère ligne maison.

Collection	CA C'EST PARIS !
Marque	JEAN-PAUL GAULTIER

FICHE TECHNIQUE

Composition	Coton 100%
Largeur	138 cm
Coupe au raccord	Non
Raccord sauté	Non
Entretien	   
Utilisations	   
Test Martindale	21 000 T
Poids ML	365 g

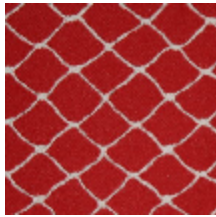
LELIEVRE

PARIS

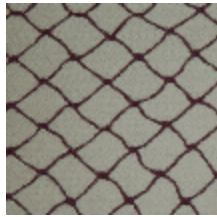
Coloris disponibles



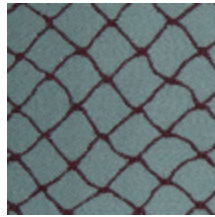
3436-01
**CABARET -
GRAPHITE ***



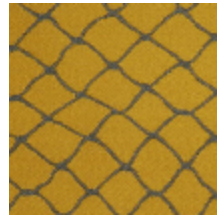
3436-02
**CABARET -
ROUGE ***



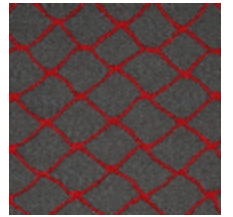
3436-03
**CABARET -
BORDEAUX ***



3436-04
**CABARET -
PORCELAINE ***



3436-06
**CABARET -
POLLEN ***



3436-07
**CABARET -
LAQUE ***



3436-08
**CABARET -
NECTAR ***



3436-09
**CABARET - BEIGE



3436-10
**CABARET -
CHAIR ***

CABARET - POLLEN *

3436-06

