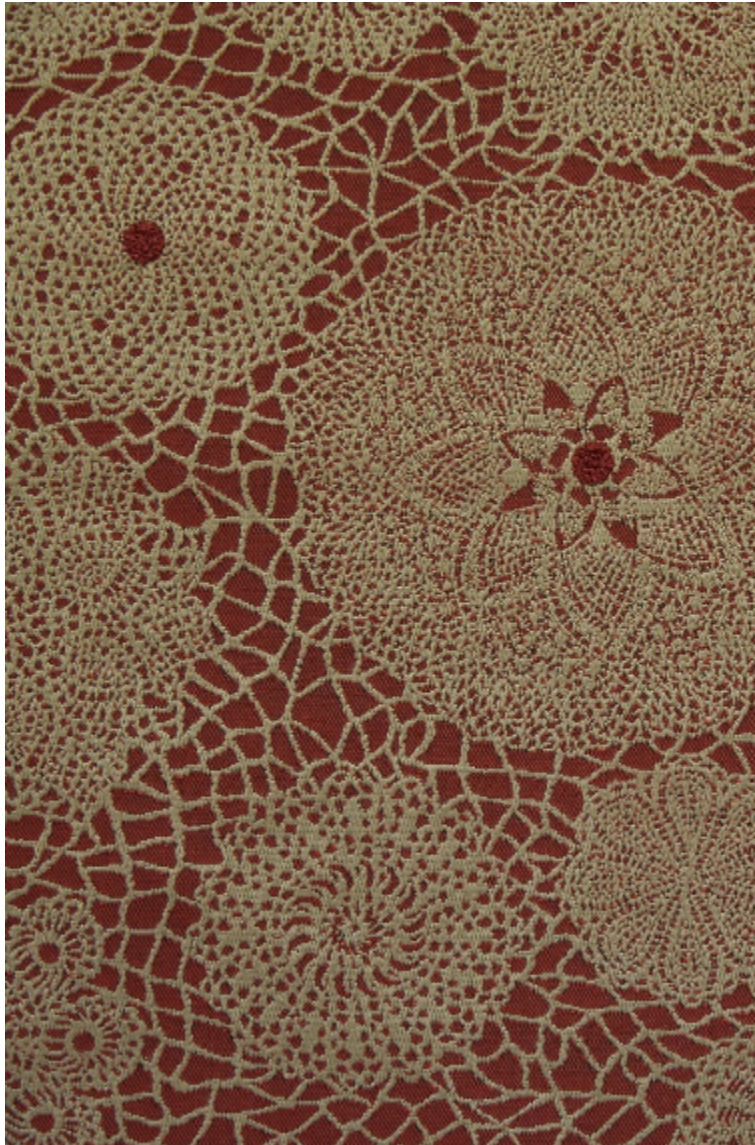


MACRAME - BRIQUE

3491-03



Jacquard reliéé dont l'inspiration "classique" apaise.

Collection POP ROCK

Marque JEAN PAUL GAULTIER

FICHE TECHNIQUE

Composition Viscose 70% - Polyester 30%

Largeur 140 cm

Coupe au raccord Non

Raccord vertical 47 cm

Raccord horizontal 35 cm

Raccord sauté Non

Entretien    

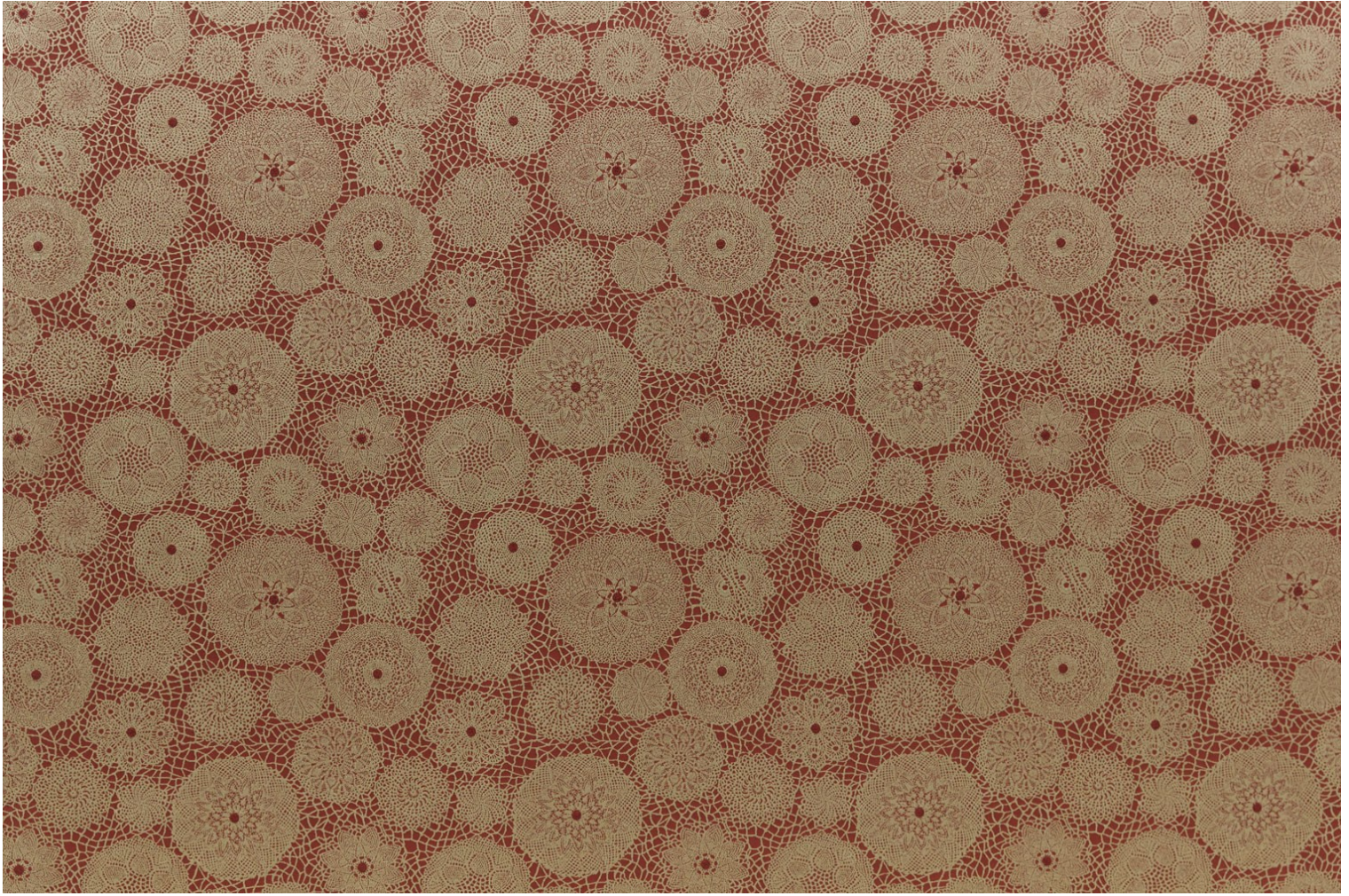
Utilisations   

Test Martindale 25 000 T

Poids ML 742 g

LELIEVRE

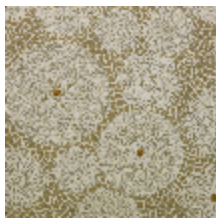
PARIS



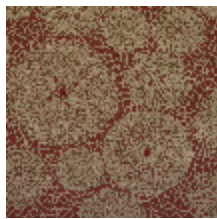
Coloris disponibles



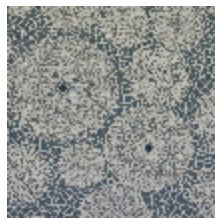
3491-01
**MACRAME -
NATUREL**



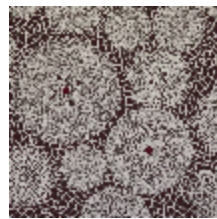
3491-02
**MACRAME -
POLLEN**



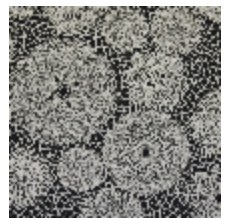
3491-03
**MACRAME -
BRIQUE**



3491-04
MACRAME - BLEU



3491-05
**MACRAME -
BORDEAUX**



3491-06
MACRAME - NOIR

MACRAME - BRIQUE

3491-03

