

**MACRAME - BLEU \***

3491-04



Jacquard relié dont l'inspiration "classique" apaise.

Collection POP ROCK

Marque JEAN PAUL GAULTIER

## FICHE TECHNIQUE

Composition Viscose 70% - Polyester 30%

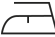
Largeur 140 cm

Coupe au raccord Non

Raccord vertical 47 cm

Raccord horizontal 35 cm

Raccord sauté Non

Entretien   

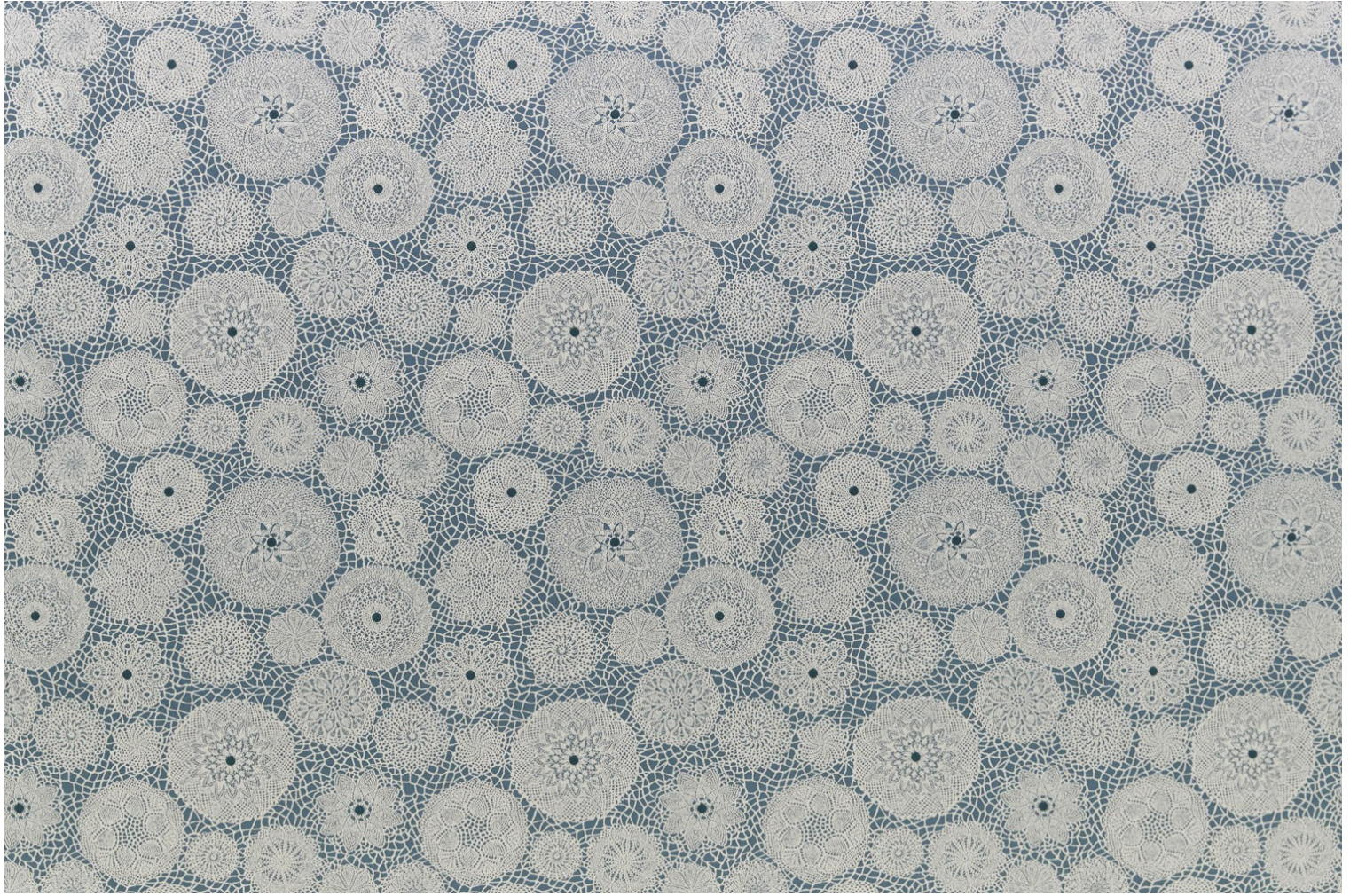
Utilisations   

Test Martindale 25 000 T

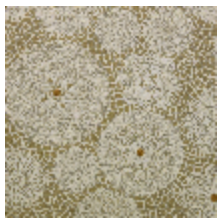
Poids ML 742 g

# LELIEVRE

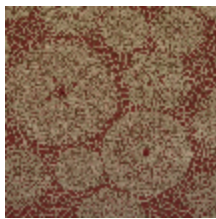
PARIS



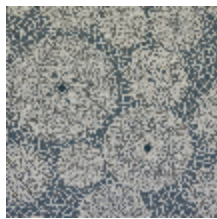
## Coloris disponibles



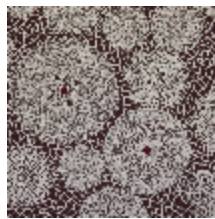
3491-02  
**MACRAME -  
POLLEN \***



3491-03  
**MACRAME -  
BRIQUE \***



3491-04  
**MACRAME - BLEU  
\***



3491-05  
**MACRAME -  
BORDEAUX \***



3491-06  
**MACRAME - NOIR  
\***

## MACRAME - BLEU \*

3491-04

