

MACRAME - BORDEAUX *

3491-05



Jacquard relié dont l'inspiration "classique" apaise.

Collection **POP ROCK**

Marque **JEAN PAUL GAULTIER**

FICHE TECHNIQUE

Composition **Viscose 70% - Polyester 30%**

Largeur **140 cm**

Coupe au raccord **Non**

Raccord vertical **47 cm**

Raccord horizontal **35 cm**

Raccord sauté **Non**

Entretien    

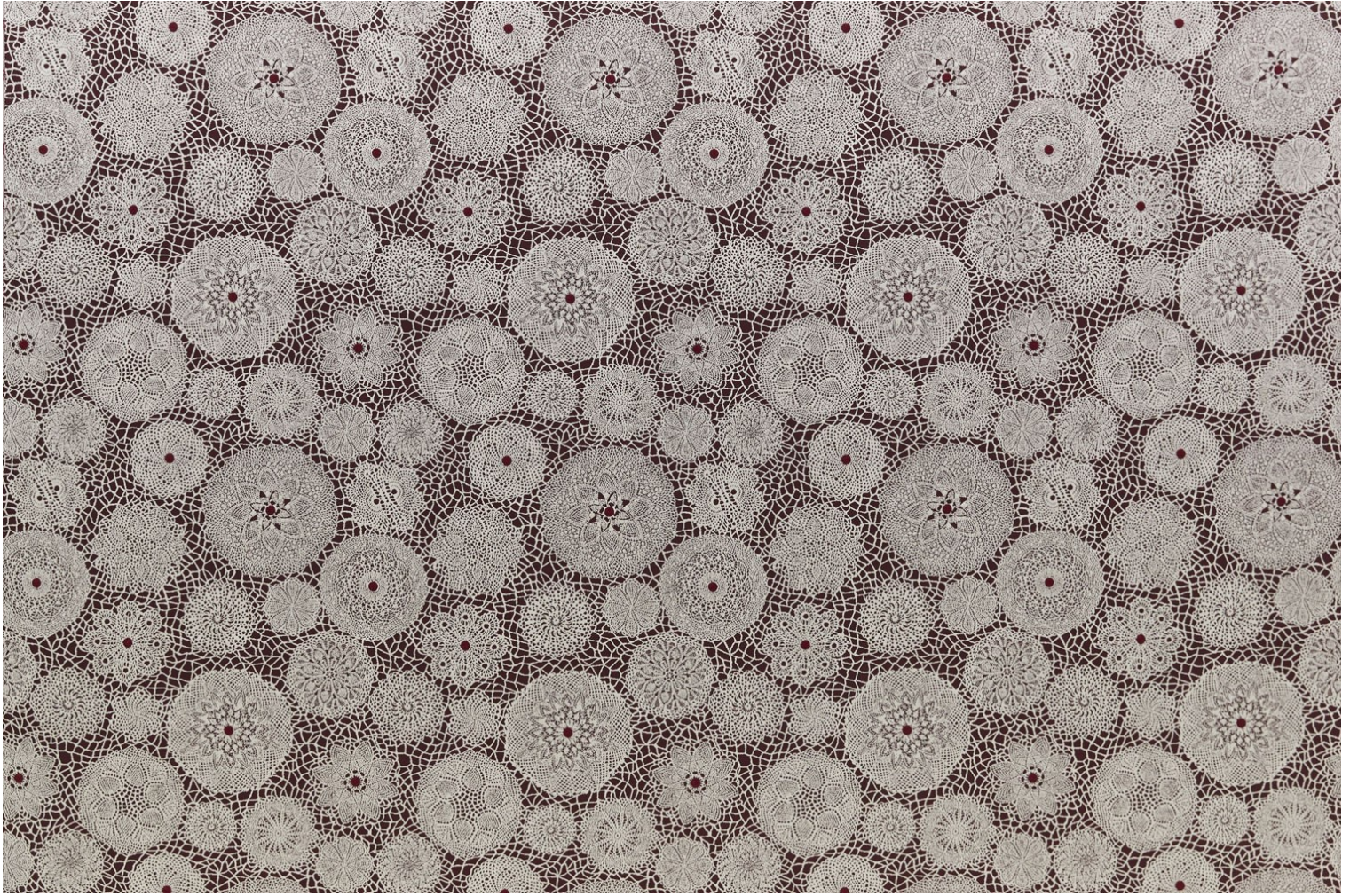
Utilisations   

Test Martindale **25 000 T**

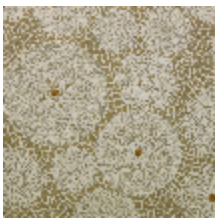
Poids ML **742 g**

LELIEVRE

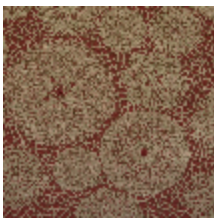
PARIS



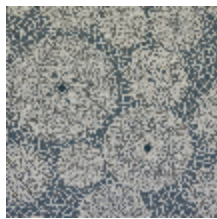
Coloris disponibles



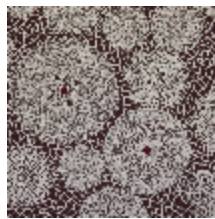
3491-02
**MACRAME -
POLLEN ***



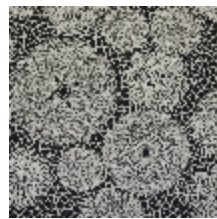
3491-03
**MACRAME -
BRIQUE ***



3491-04
**MACRAME - BLEU



3491-05
**MACRAME -
BORDEAUX ***



3491-06
**MACRAME - NOIR

MACRAME - BORDEAUX *

3491-05

