

# LELIEVRE

PARIS

## SILHOUETTES - BORDEAUX \*

3492-04



Un jacquard particulièrement souple et solide qui se joue de poses très sophistiquées.

---

Collection	POP ROCK
------------	----------

---

Marque	JEAN PAUL GAULTIER
--------	--------------------

---

### FICHE TECHNIQUE

---

Type	Jacquard
------	----------

---

Composition	Coton 90% - Polyamide 10%
-------------	---------------------------

---

Largeur	140 cm
---------	--------

---

Coupe au raccord	Non
------------------	-----

---

Raccord vertical	29 cm
------------------	-------

---

Raccord horizontal	14 cm
--------------------	-------

---

Raccord sauté	Non
---------------	-----

---

Entretien	  
-----------	---

---

Utilisations	   
--------------	---

---

Test Martindale	35 000 T
-----------------	----------

---

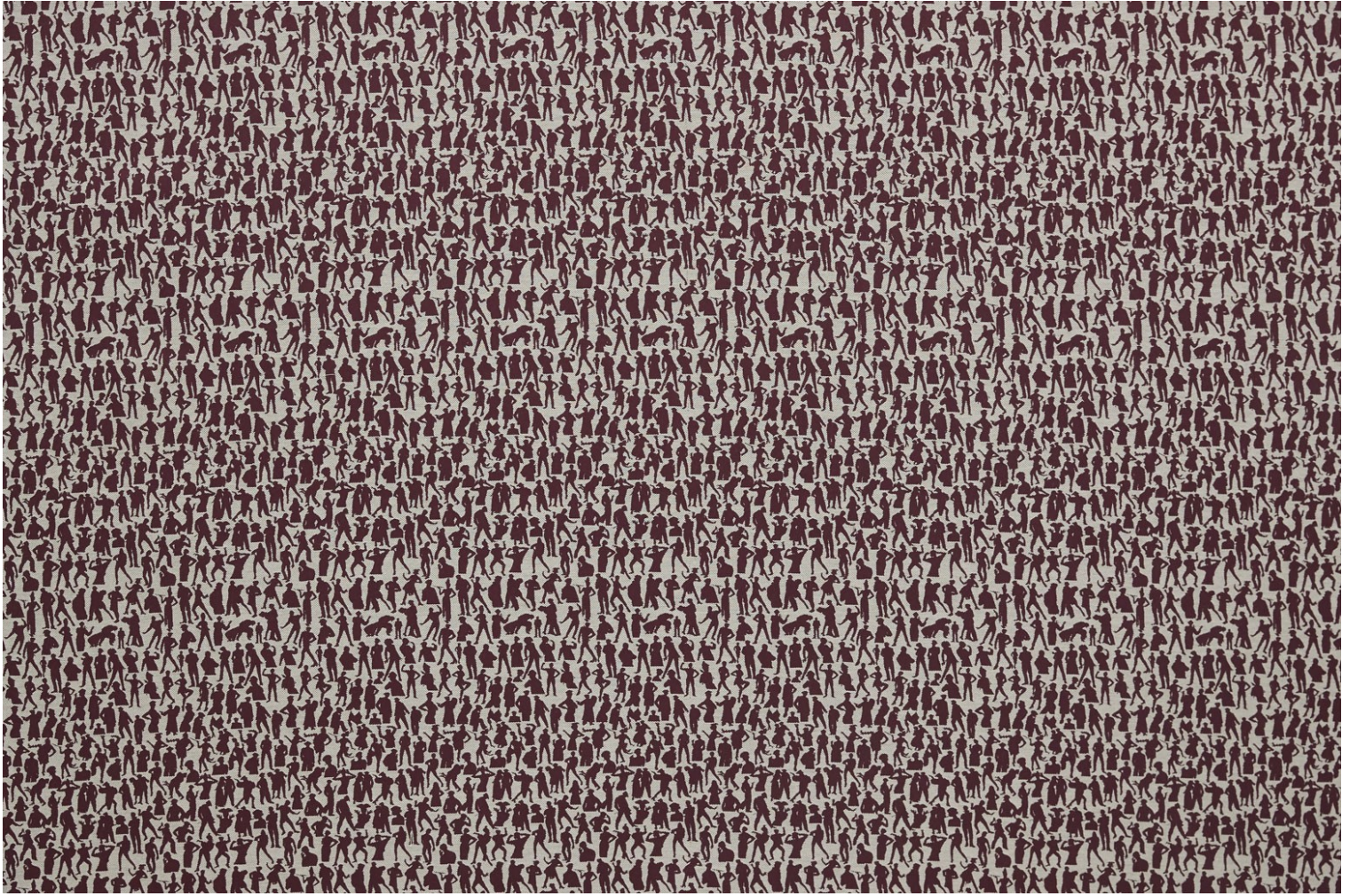
Poids ML	510 g
----------	-------

---



# LELIEVRE

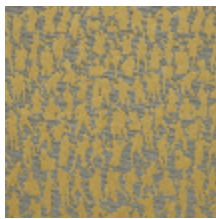
PARIS



## Coloris disponibles



3492-01  
**SILHOUETTES -  
NATUREL \***



3492-02  
**SILHOUETTES -  
JAUNE \***



3492-03  
**SILHOUETTES -  
TERRACOTTA \***



3492-04  
**SILHOUETTES -  
BORDEAUX \***



3492-05  
**SILHOUETTES -  
FUCHSIA \***



3492-06  
**SILHOUETTES -  
NOIR \***



**SILHOUETTES - BORDEAUX \***

3492-04

