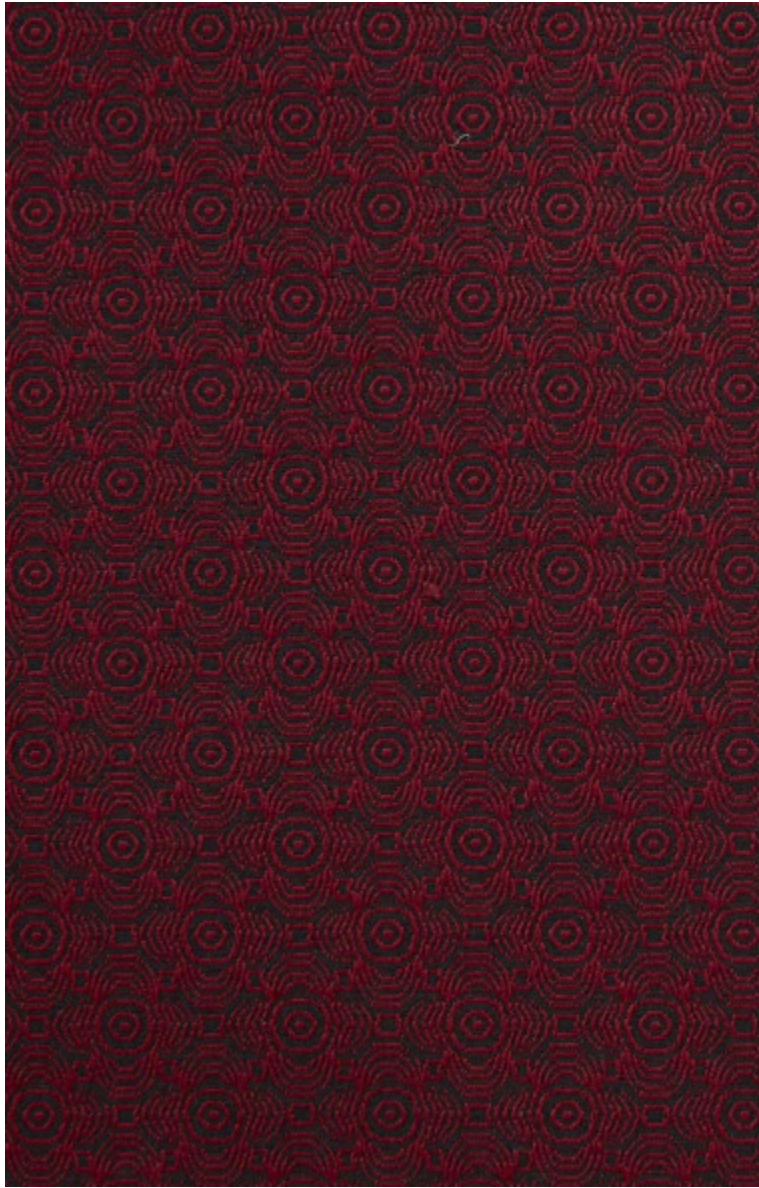


LELIEVRE

PARIS

OPTIC - ROUGE *

3494-03



Le jacquard se fait plus discret. Presque faux-uni, il devient classique et parfaitement polyvalent.

Collection	POP ROCK
------------	----------

Marque	JEAN PAUL GAULTIER
--------	--------------------

FICHE TECHNIQUE

Composition	Viscose 74% - Coton 23% - Polyamide 3%
-------------	---


Largeur	140 cm
---------	--------


Coupe au raccord	Non
------------------	-----

Raccord vertical	6 cm
------------------	------

Raccord horizontal	17 cm
--------------------	-------

Raccord sauté	Non
---------------	-----

Entretien	   
-----------	---

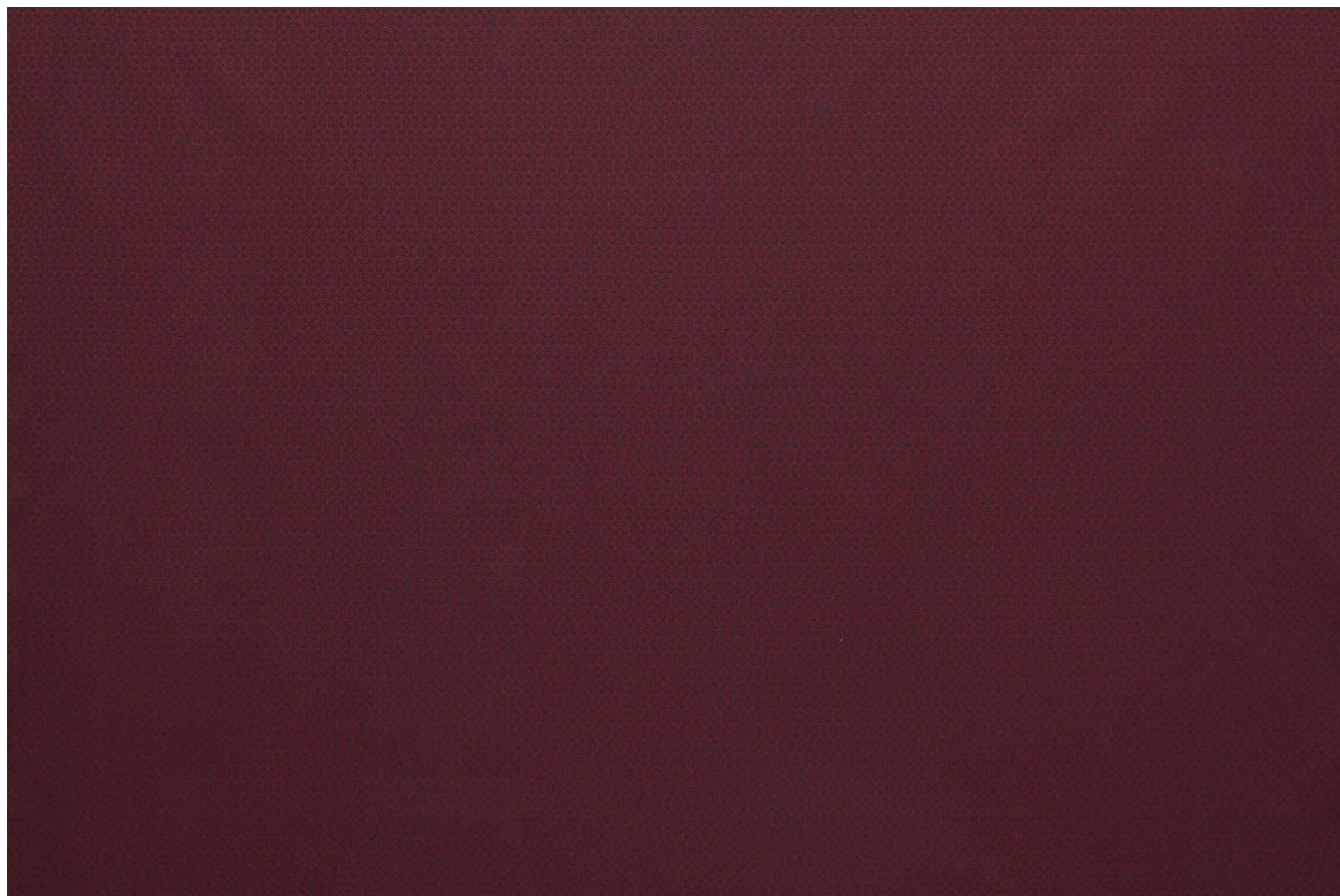
Utilisations	   
--------------	---

Test Martindale	25 000 T
-----------------	----------

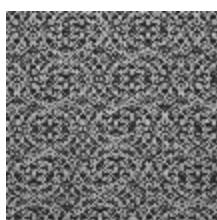
Poids ML	461 g
----------	-------

LELIEVRE

PARIS



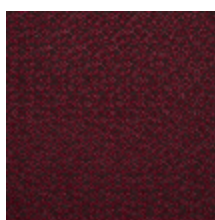
Coloris disponibles



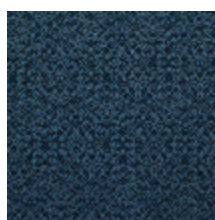
3494-01
**OPTIC -
GRAPHITE ***



3494-02
OPTIC - JAUNE *



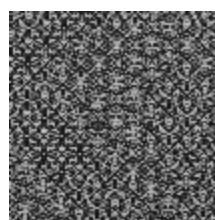
3494-03
OPTIC - ROUGE *



3494-04
**OPTIC -
TURQUOISE ***



3494-05
**OPTIC - FUCHSIA



3494-06
OPTIC - NOIR *

LELIEVRE

PARIS

OPTIC - ROUGE *

3494-03



lelievrepairs.com
contact@lelievrepairs.com