

**OPTIC - FUCHSIA \***

3494-05



Le jacquard se fait plus discret. Presque faux-uni, il devient classique et parfaitement polyvalent.

Collection	POP ROCK
------------	----------

Marque	JEAN PAUL GAULTIER
--------	--------------------

## FICHE TECHNIQUE

Composition	Viscose 74% - Coton 23% - Polyamide 3%
-------------	---

Largeur	140 cm
---------	--------

Coupe au raccord	Non
------------------	-----

Raccord vertical	6 cm
------------------	------

Raccord horizontal	17 cm
--------------------	-------

Raccord sauté	Non
---------------	-----

Entretien	   
-----------	---

Utilisations	   
--------------	---

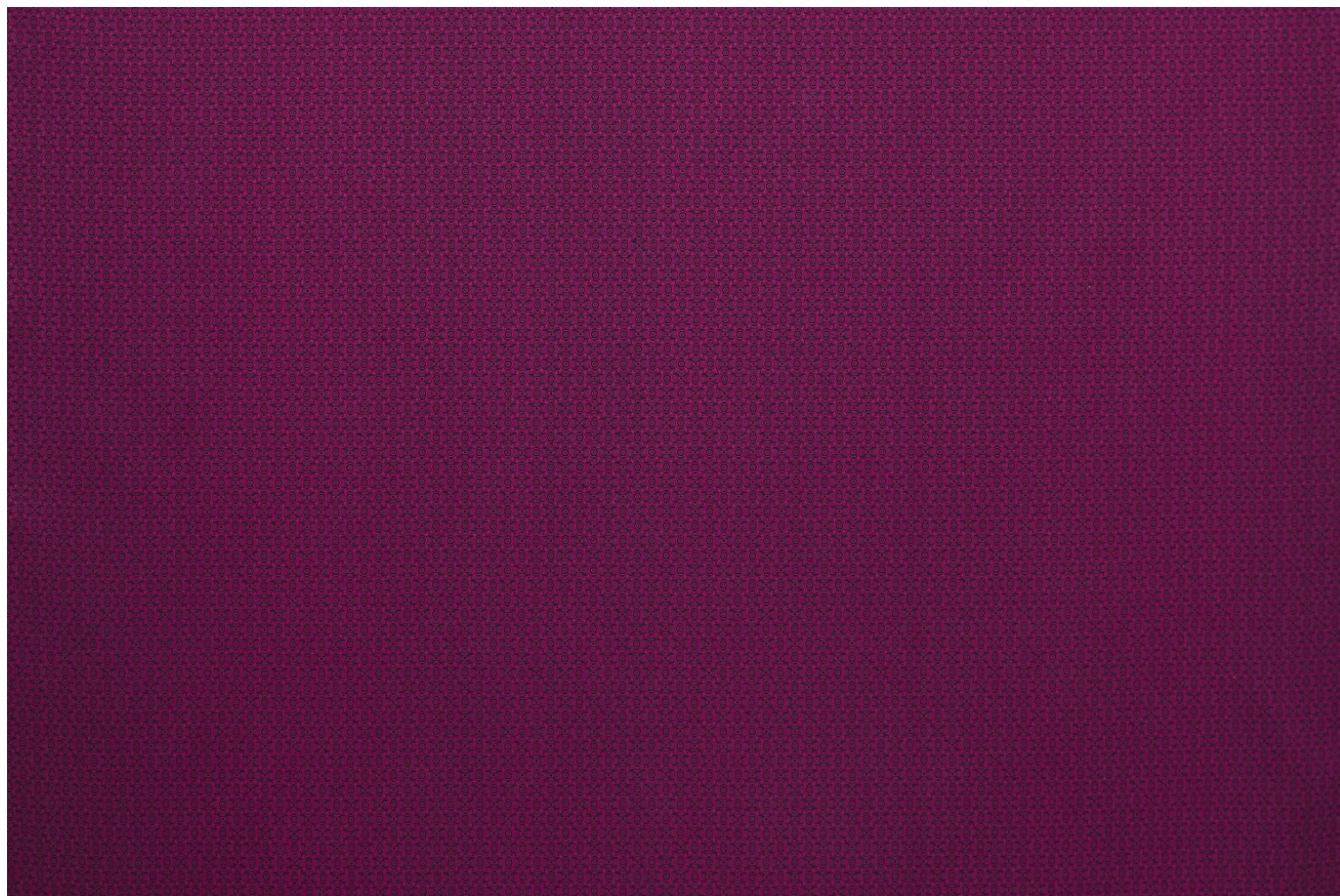
Test Martindale	25 000 T
-----------------	----------

Poids ML	461 g
----------	-------

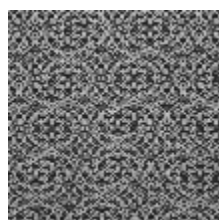


# LELIEVRE

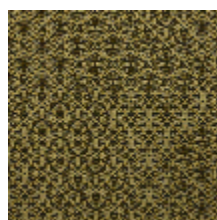
PARIS



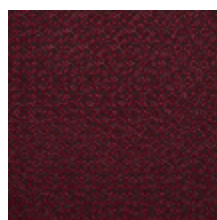
## Coloris disponibles



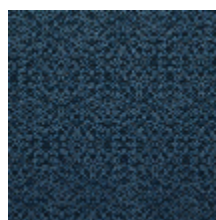
3494-01  
**OPTIC -  
GRAPHITE \***



3494-02  
**OPTIC - JAUNE \***



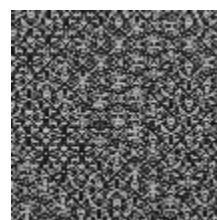
3494-03  
**OPTIC - ROUGE \***



3494-04  
**OPTIC -  
TURQUOISE \***



3494-05  
**OPTIC - FUCHSIA  
\***



3494-06  
**OPTIC - NOIR \***



# LELIEVRE

PARIS

**OPTIC - FUCHSIA \***

3494-05



[lelievrepairs.com](http://lelievrepairs.com)  
[contact@lelievrepairs.com](mailto:contact@lelievrepairs.com)