

**BREST - INDIGO**

3506-01



De la classique marinière JPG aux marins du monde, il ne manquait qu'un jacquard outdoor...

Collection AUTOUR DU MONDE

Marque JEAN PAUL GAULTIER

## FICHE TECHNIQUE

Composition 50% Acrylique - 50% Polypropylène






Largeur 138 cm

Coupe au raccord Non

Raccord vertical 3 cm

Raccord sauté Non

Entretien    

Utilisations     

Test Martindale 20 000 T

Poids ML 421 g

# LELIEVRE

PARIS

LELIEVRE

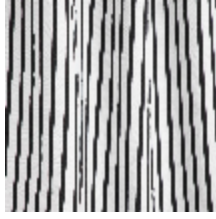
PARIS



**Coloris disponibles**



3506-01  
**BREST - INDIGO**



3506-02  
**BREST - NOIR**

# LELIEVRE

PARIS

## BREST - INDIGO

3506-01

