

BERRY-SAFRAN

0363-01



BERRY est noble, avec un poil légèrement couché lui donnant un aspect soyeux, plus résistant. Sa gamme est composée de 25 coloris dans le ton. Beaucoup d'entre eux sont les incontournables classiques d'autres plus actuels pour orienter cette nouvelle qualité vers un univers plus contemporain.

Marque	LELIEVRE PARIS
--------	----------------

FICHE TECHNIQUE

Composition	Acrylique 53% - Coton 20% - Polyester 18% - Viscose 9%
-------------	--

Largeur	140 cm
---------	--------

Coupe au raccord	Non
------------------	-----

Raccord sauté	Non
---------------	-----

Entretien	  
-----------	---

Utilisations	 
--------------	---

Test Martindale	50 000 T
-----------------	----------

Poids ML	670 g
----------	-------

LELIEVRE

PARIS

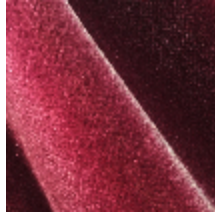
Coloris disponibles



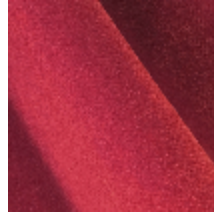
0363-01
BERRY-SAFRAN



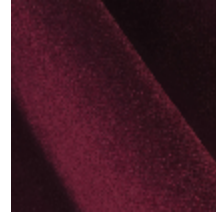
0363-03
BERRY-GROSEILLE



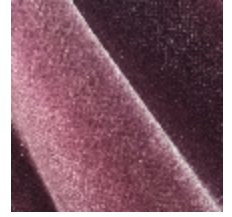
0363-04
BERRY-BIGARREAU



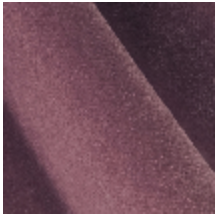
0363-05
BERRY-RUBIS



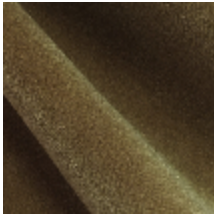
0363-06
BERRY-QUETSCHÉ



0363-07
BERRY-LILAS *



0363-08
BERRY-GLYCINE



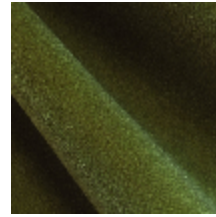
0363-09
BERRY-TAUPE



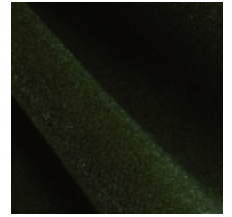
0363-10
BERRY-SABLE



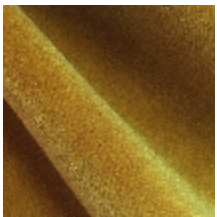
0363-11
BERRY-IVOIRE



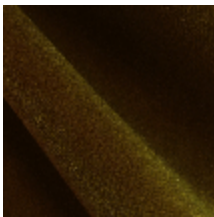
0363-14
BERRY-LENTILLE



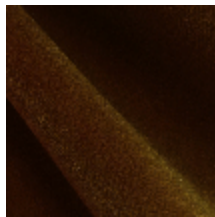
0363-15
BERRY-LAURIER



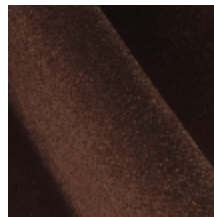
0363-16
BERRY-OR



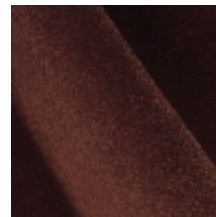
0363-17
BERRY-GINGEMBRE



0363-18
BERRY-ECAILLE



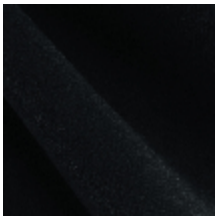
0363-19
BERRY-HAVANE



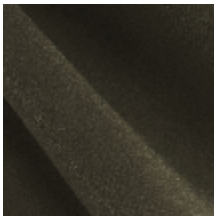
0363-20
BERRY-CHATAIGNE



0363-21
BERRY-OURS



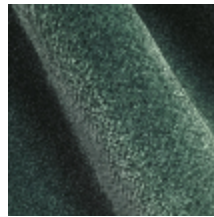
0363-23
BERRY-ETAIN



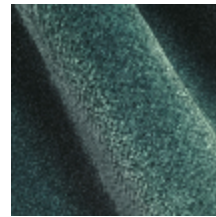
0363-24
BERRY-GRES



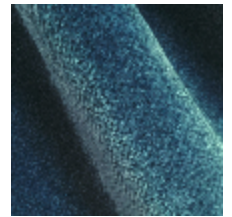
0363-25
BERRY-FUMÉE



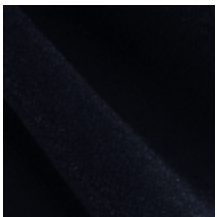
0363-27
BERRY-SAUGE



0363-28
BERRY-GLACIER



0363-29
BERRY-PORCELAINE



0363-30
BERRY-MARINE

LELIEVRE

PARIS

BERRY-SAFRAN

0363-01

