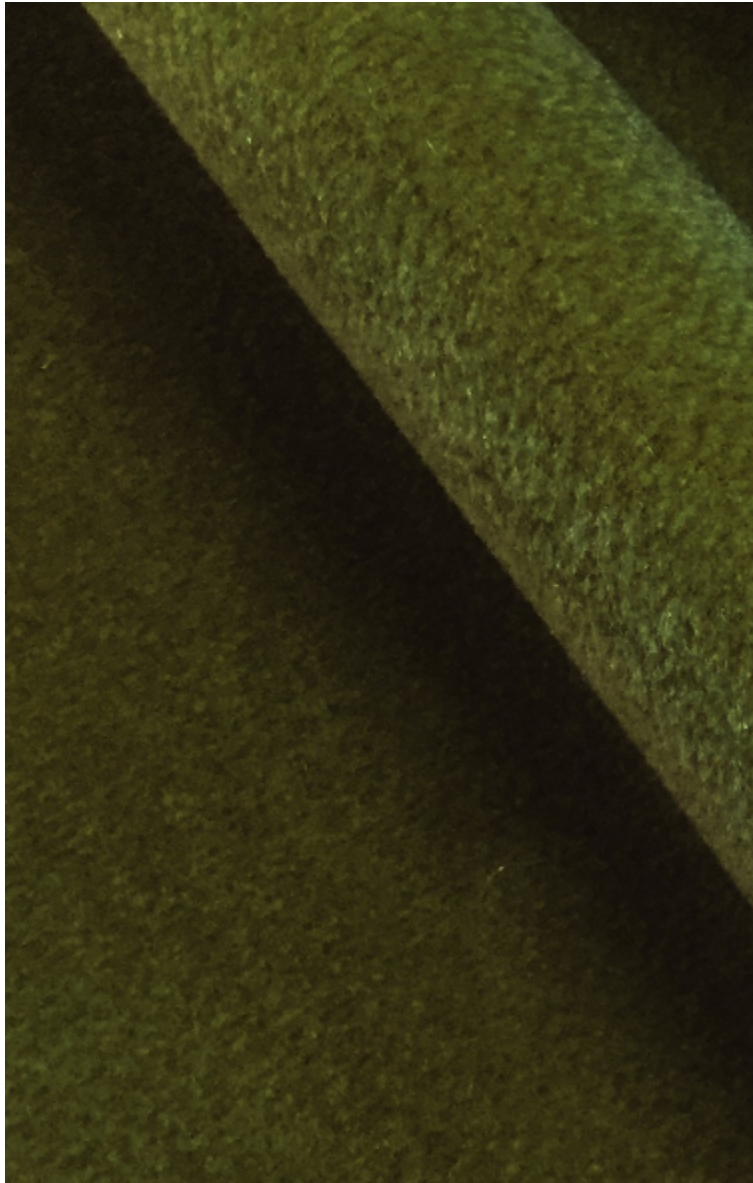


**BERRY-LENTILLE**

0363-14



BERRY est noble, avec un poil légèrement couché lui donnant un aspect soyeux, plus résistant. Sa gamme est composée de 25 coloris dans le ton. Beaucoup d'entre eux sont les incontournables classiques d'autres plus actuels pour orienter cette nouvelle qualité vers un univers plus contemporain.

---

Marque	LELIÈVRE
--------	----------

---

## FICHE TECHNIQUE

---

Composition	Acrylique 53% - Coton 20% - Polyester 18% - Viscose 9%
-------------	---

---

Largeur	140 cm
---------	--------


---

Coupe au raccord	Non
------------------	-----

---

Raccord sauté	Non
---------------	-----

---

Entretien	   
-----------	---

---

Utilisations	 
--------------	---

---

Test Martindale	50 000 T
-----------------	----------

---

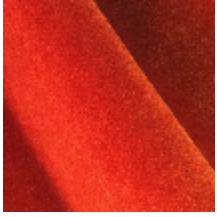
Poids ML	670 g
----------	-------

---

# LELIEVRE

PARIS

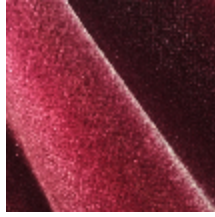
## Coloris disponibles



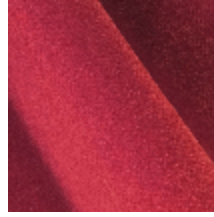
0363-01  
**BERRY-SAFRAN**



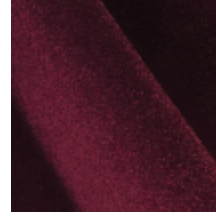
0363-03  
**BERRY-GROSEILLE**



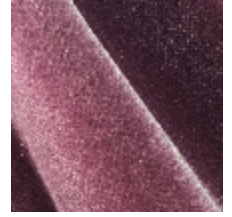
0363-04  
**BERRY-BIGARREAU**



0363-05  
**BERRY-RUBIS**



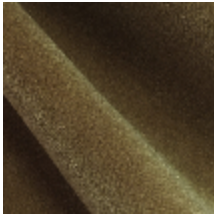
0363-06  
**BERRY-QUETSCHÉ**



0363-07  
**BERRY-LILAS \***



0363-08  
**BERRY-GLYCINE**



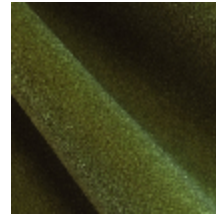
0363-09  
**BERRY-TAUPE**



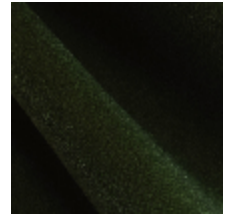
0363-10  
**BERRY-SABLE**



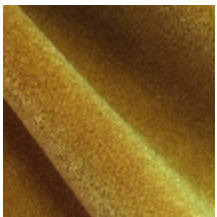
0363-11  
**BERRY-IVOIRE**



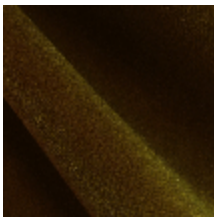
0363-14  
**BERRY-LENTILLE**



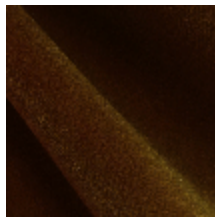
0363-15  
**BERRY-LAURIER**



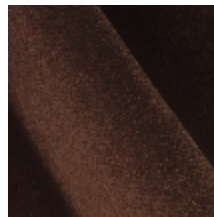
0363-16  
**BERRY-OR**



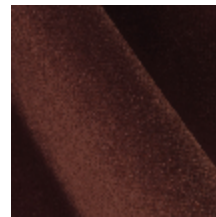
0363-17  
**BERRY-GINGEMBRE**



0363-18  
**BERRY-ECAILLE**



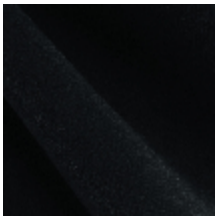
0363-19  
**BERRY-HAVANE**



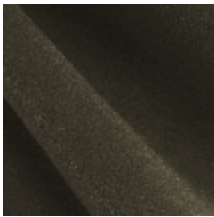
0363-20  
**BERRY-CHATAIGNE**



0363-21  
**BERRY-OURS**



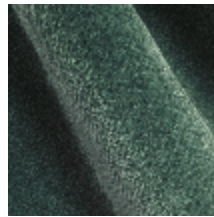
0363-23  
**BERRY-ETAIN**



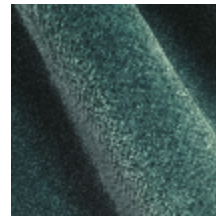
0363-24  
**BERRY-GRES**



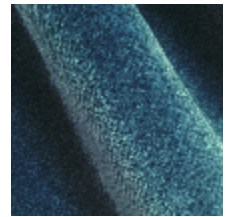
0363-25  
**BERRY-FUMÉE**



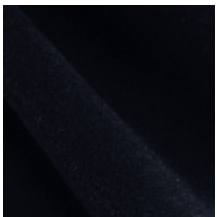
0363-27  
**BERRY-SAUGE**



0363-28  
**BERRY-GLACIER**



0363-29  
**BERRY-PORCELAINE**



0363-30  
**BERRY-MARINE**

**BERRY-LENTILLE**

0363-14

