

DAMAS DELACROIX - CREME

4050-02



Damas de style Louis XV dont le décor se compose de grosses fleurs ondulantes.

Marque	QUENIN
--------	--------

FICHE TECHNIQUE


Composition	Viscose 100%
-------------	--------------

Largeur	130 cm
---------	--------

Coupe au raccord	Non
------------------	-----

Raccord vertical	58 cm
------------------	-------

Raccord sauté	Non
---------------	-----

Entretien	   
-----------	---

Utilisations	   
--------------	---

Poids ML	380 g
----------	-------

LELIEVRE

PARIS

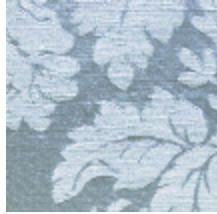
Coloris disponibles



4050-02
**DAMAS
DELACROIX -
CREME**



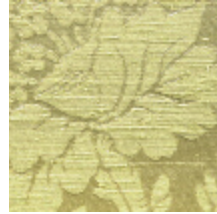
4050-04
**DAMAS
DELACROIX -
SOUFRE**



4050-11
**DAMAS
DELACROIX - CIEL**



4050-13
**DAMAS
DELACROIX -
MARINE**



4050-14
**DAMAS
DELACROIX -
TILLEUL**



4050-23
**DAMAS
DELACROIX -
ROSE**



4050-24
**DAMAS
DELACROIX - OR**

*

LELIEVRE
PARIS

DAMAS DELACROIX - CREME

4050-02

