

TAILOR – ANTILOPE








4231-01



Raffiné et intemporel, ce chevron d'aspect très naturel est le fruit d'une mise au point minutieuse. La recherche d'un équilibre harmonieux entre structure, échelle et performances a trouvé son expression dans cette belle matière pleine de caractère. Une palette de 27 coloris décline une large gamme de tons neutres inspirés du vestiaire masculin, agrémentée d'accents vifs et toniques. Son utilisation multiple permet l'habillage d'assises ou de fenêtres dans un esprit chic et bien ajusté.

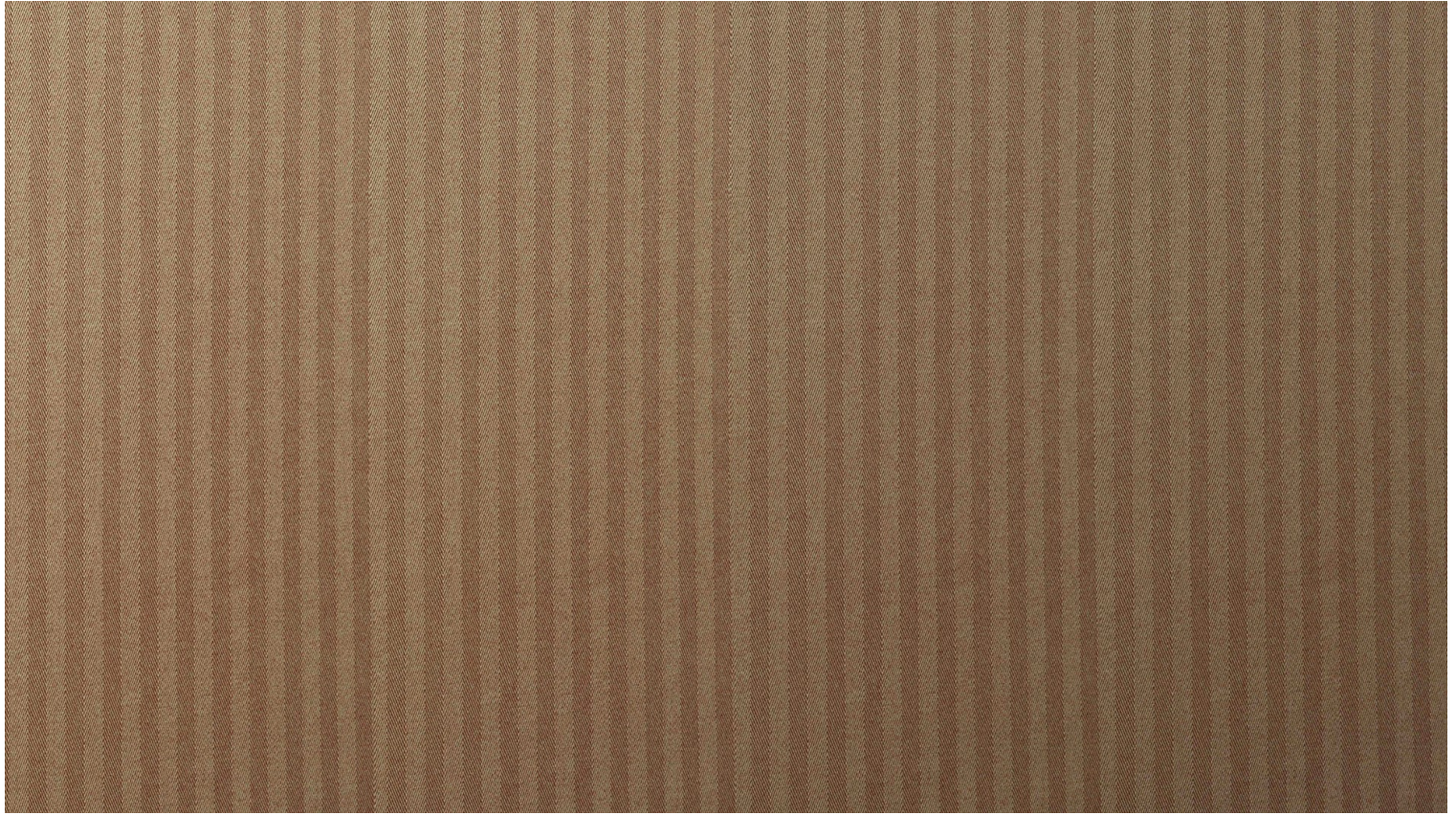
Collection	COLLECTION 21
Marque	LELIEVRE PARIS CONTRACT

FICHE TECHNIQUE

Type	Uni
Composition	Polyester TREVIRA CS 100%
Largeur	141 cm
Coupe au raccord	Non
Raccord sauté	Non
Entretien	  
Utilisations	   
Test Martindale	45 000 T
Poids ML	500 g
Code feu	M1

LELIEVRE

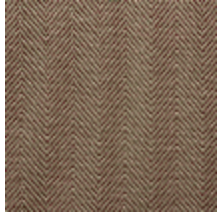
PARIS



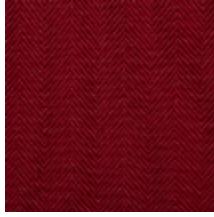
LELIEVRE

PARIS

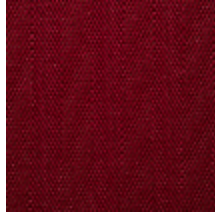
Coloris disponibles



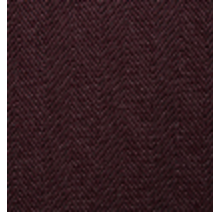
4231-01
**TAILOR -
ANTILOPE**



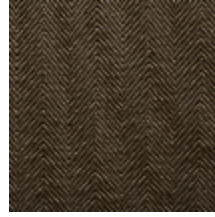
4231-04
**TAILOR - PIMENT



4231-05
**TAILOR -
FRAMBOISE**



4231-06
**TAILOR -
BETTERAVE**



4231-08
TAILOR - VISON



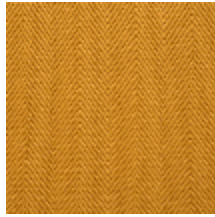
4231-09
TAILOR - GRANIT



4231-10
**TAILOR - POIVRE



4231-11
TAILOR - POUDRE



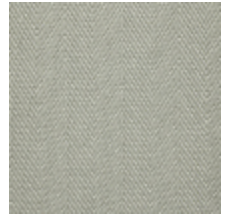
4231-12
**TAILOR -
MIMOSA**



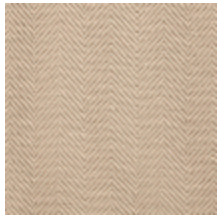
4231-13
TAILOR - DORE



4231-14
TAILOR - LIN



4231-15
TAILOR - CHAUX



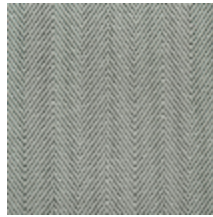
4231-16
TAILOR - FICELLE



4231-17
**TAILOR -
NATUREL ***



4231-18
TAILOR - MASTIC



4231-19
**TAILOR -
SCANDINAVIE ***



4231-20
**TAILOR -
EMERAUDE**



4231-21
**TAILOR -
EQUATEUR**



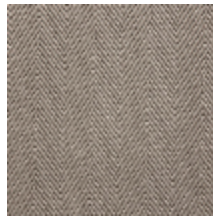
4231-22
TAILOR - MARINE



4231-24
TAILOR - GLACIER



4231-25
TAILOR - ARGENT



4231-26
TAILOR - ARGILE

TAILOR – ANTILOPE

4231-01

