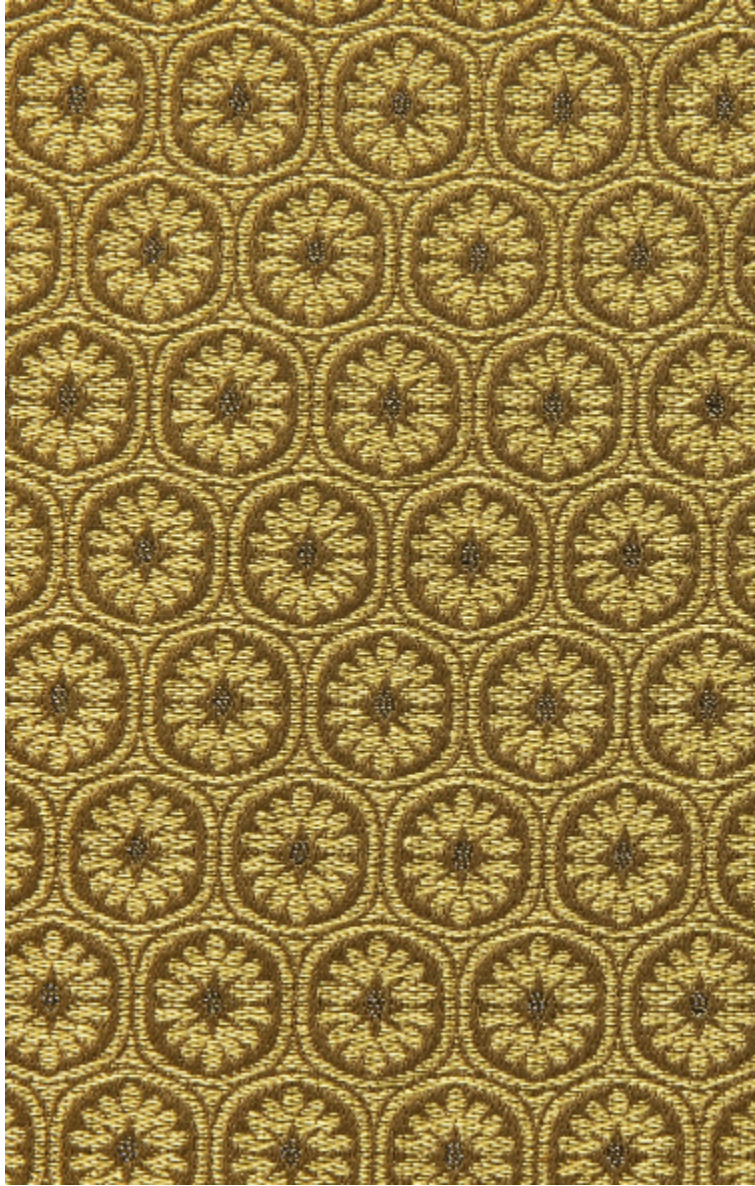


MEDAILLON - MORDORE

4243-03



Un motif all-over de petites médailles ciselées représentant un motif floral au cœur lumineux.

Collection	FLORILEGE
------------	-----------

Marque	QUENIN
--------	--------

FICHE TECHNIQUE

Composition	Polyamide 35% - Lin 32% - Viscose 32% - Polyester 1%
-------------	---


Largeur	130 cm
---------	--------

Coupe au raccord	Non
------------------	-----

Raccord vertical	4 cm
------------------	------

Raccord horizontal	2 cm
--------------------	------

Raccord sauté	Non
---------------	-----

Entretien	   
-----------	---

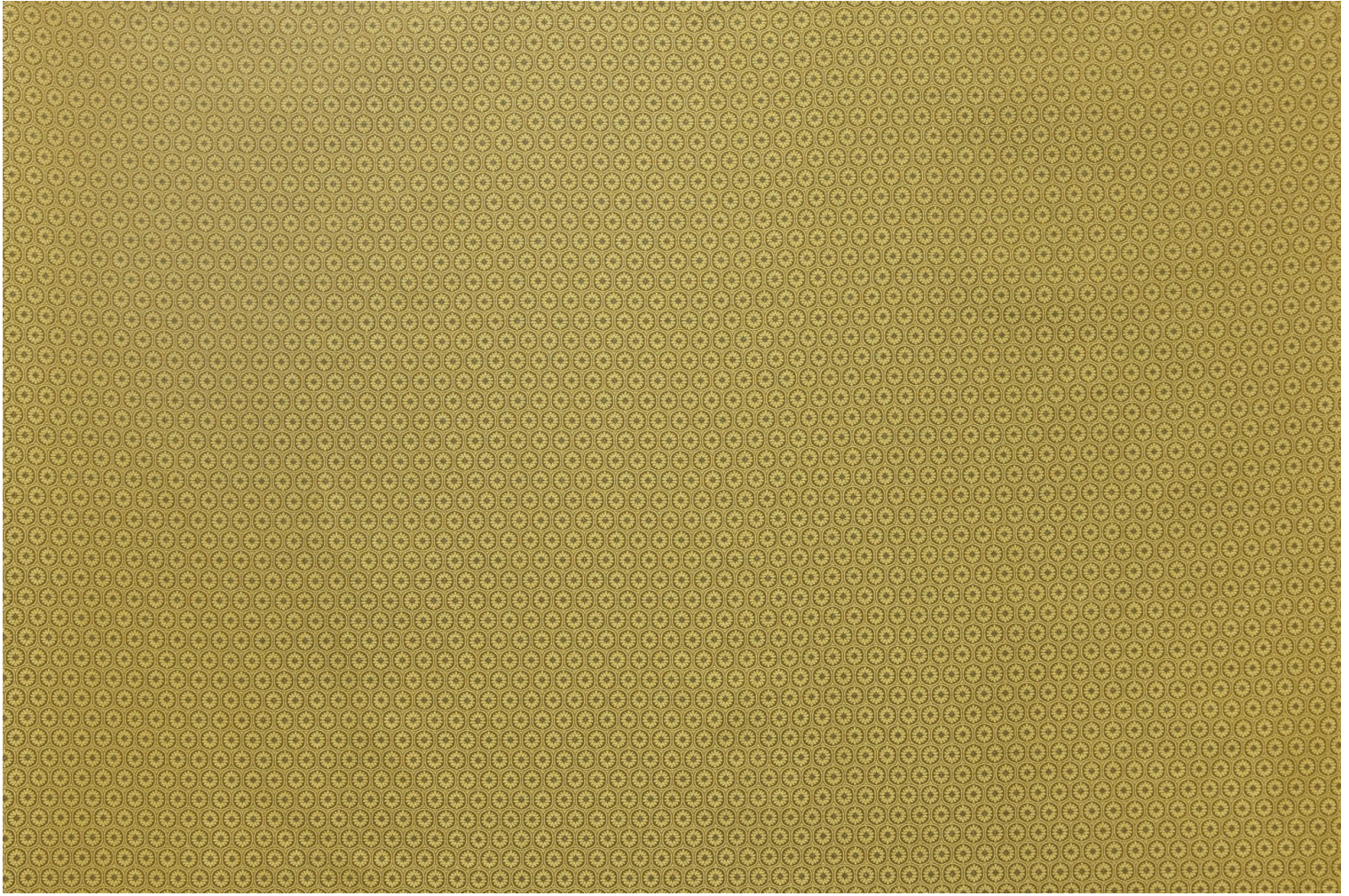
Utilisations	   
--------------	---

Test Martindale	40 000 T
-----------------	----------

Poids ML	400 g
----------	-------

LELIEVRE

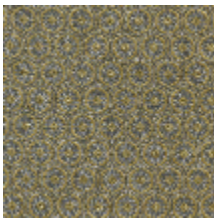
PARIS



Coloris disponibles



4243-01
**MEDAILLON -
CRAMOISI**



4243-02
**MEDAILLON -
SCARABEE**



4243-03
**MEDAILLON -
MORDORE**



4243-04
**MEDAILLON -
VERMEIL**



4243-05
**MEDAILLON -
EMAIL**