

**BOSQUET - CRAMOISI**

4244-01



Sa structure géométrique quadrillée encadre de délicats motifs de trèfles à quatre feuilles.

---

Collection	FLORILEGE
------------	-----------

---

Marque	QUENIN
--------	--------

---

---

**FICHE TECHNIQUE**

---

Composition	Polyamide 36% - Lin 34% - Coton 30%
-------------	--

---

Largeur	130 cm
---------	--------

---

Coupe au raccord	Non
------------------	-----

---

Raccord vertical	3 cm
------------------	------


---

Raccord horizontal	3 cm
--------------------	------

---

Raccord sauté	Non
---------------	-----

---

Entretien	   
-----------	---

---

Utilisations	   
--------------	---

---

Test Martindale	40 000 T
-----------------	----------

---

Poids ML	390 g
----------	-------

---

# LELIEVRE

PARIS



[lelievreparis.com](http://lelievreparis.com)  
[contact@lelievreparis.com](mailto:contact@lelievreparis.com)

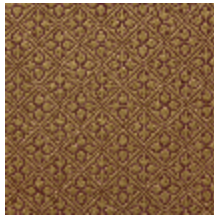
# LELIEVRE

PARIS

## Coloris disponibles



4244-01  
**BOSQUET -  
CRAMOISI**



4244-02  
**BOSQUET -  
TABAC**



4244-03  
**BOSQUET -  
MORDORE**



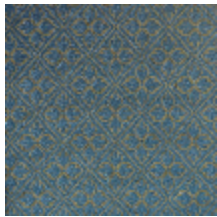
4244-04  
**BOSQUET -  
IVOIRE**



4244-05  
**BOSQUET -  
ARGENT**



4244-06  
**BOSQUET -  
CELADON**



4244-07  
**BOSQUET -  
PRUSSE**