

RAMEAUX - CRAMOISI

4245-01



Semé de délicates branchettes de feuilles colorées par la chaîne et disposées sur un fond lin.

Collection	FLORILEGE
------------	-----------

Marque	QUENIN
--------	--------

FICHE TECHNIQUE

Composition	Polyamide 36% - Lin 34% - Coton 30%
-------------	--

Largeur	130 cm
---------	--------

Coupe au raccord	Non
------------------	-----

Raccord vertical	14 cm
------------------	-------

Raccord horizontal	32 cm
--------------------	-------

Raccord sauté	Non
---------------	-----

Entretien	   
-----------	---

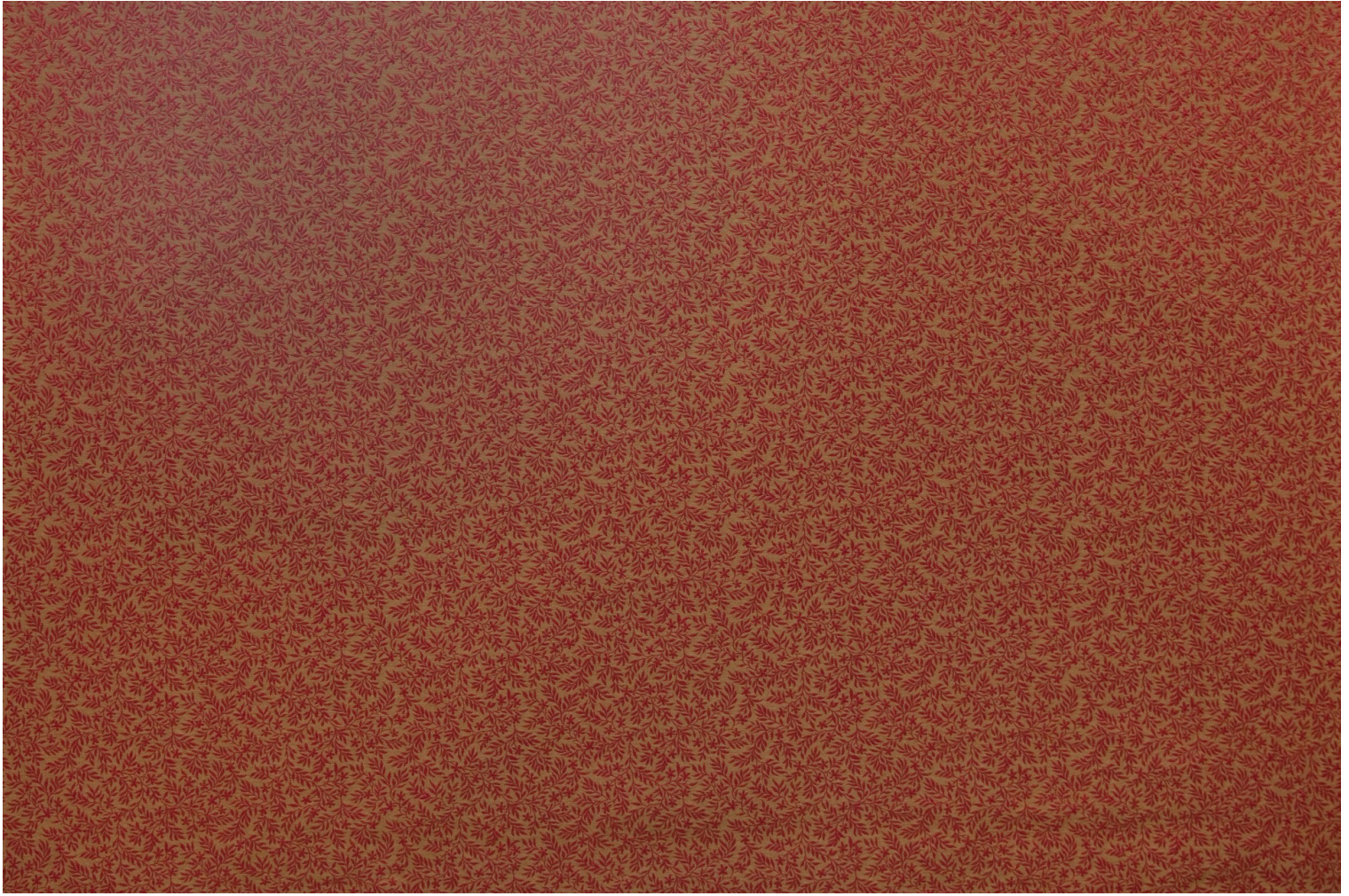
Utilisations	   
--------------	---

Test Martindale	40 000 T
-----------------	----------

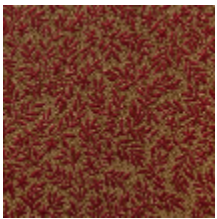
Poids ML	390 g
----------	-------

LELIEVRE

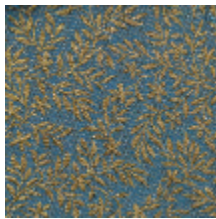
PARIS



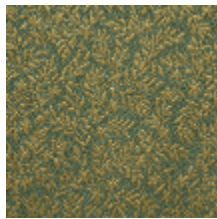
Coloris disponibles



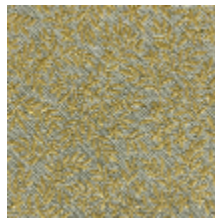
4245-01
**RAMEAUX -
CRAMOISI**



4245-02
**RAMEAUX -
PRUSSE**



4245-03
**RAMEAUX -
AMANDE**



4245-04
**RAMEAUX -
VERMEIL**



4245-05
**RAMEAUX -
NATUREL**