

**RAMEAUX - NATUREL**

4245-05



Semé de délicates branchettes de feuilles colorées par la chaîne et disposées sur un fond lin.

---

Collection	FLORILEGE
------------	-----------

---

Marque	QUENIN
--------	--------

---

**FICHE TECHNIQUE**

---

Composition	Polyamide 36% - Lin 34% - Coton 30%
-------------	--

---

Largeur	130 cm
---------	--------

---

Coupe au raccord	Non
------------------	-----

---

Raccord vertical	14 cm
------------------	-------

---

Raccord horizontal	32 cm
--------------------	-------


---

Raccord sauté	Non
---------------	-----

---

Entretien	   
-----------	---

---

Utilisations	   
--------------	---

---

Test Martindale	40 000 T
-----------------	----------

---

Poids ML	390 g
----------	-------

---

# LELIEVRE

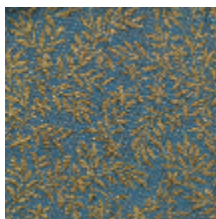
PARIS



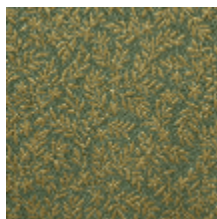
## Coloris disponibles



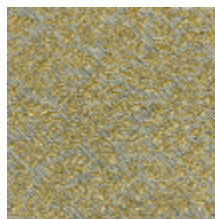
4245-01  
**RAMEAUX -  
CRAMOISI**



4245-02  
**RAMEAUX -  
PRUSSE**



4245-03  
**RAMEAUX -  
AMANDE**



4245-04  
**RAMEAUX -  
VERMEIL**



4245-05  
**RAMEAUX -  
NATUREL**