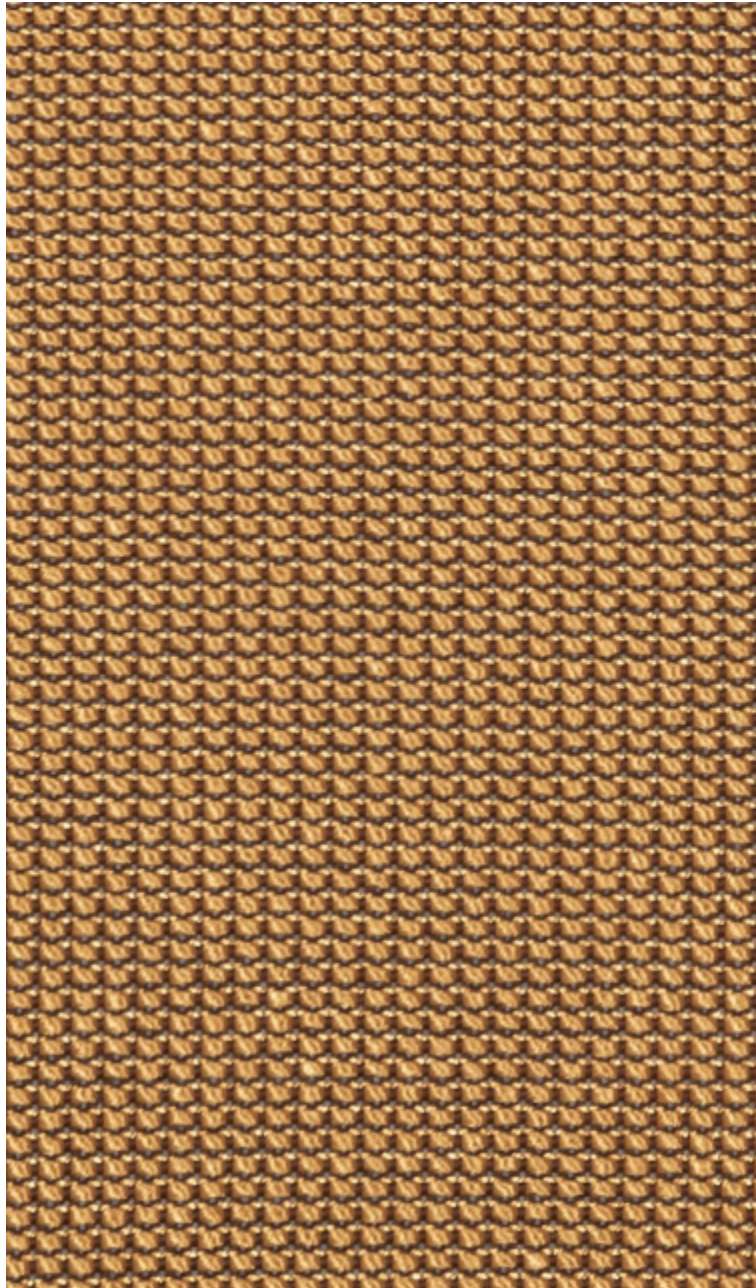


PLATINE M1 - MORDORE



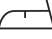





4257-06



Tissage métallisé, faux uni avec un effet 3D, PLATINE a la brillance assumée et sophistiquée d'une cote de maille. Il est composé d'une gamme en demi-teinte très douce, soulignée par un fil plus contrasté apportant un relief visuel qui vient parfaitement compléter cette collection Contract Numéro 25.

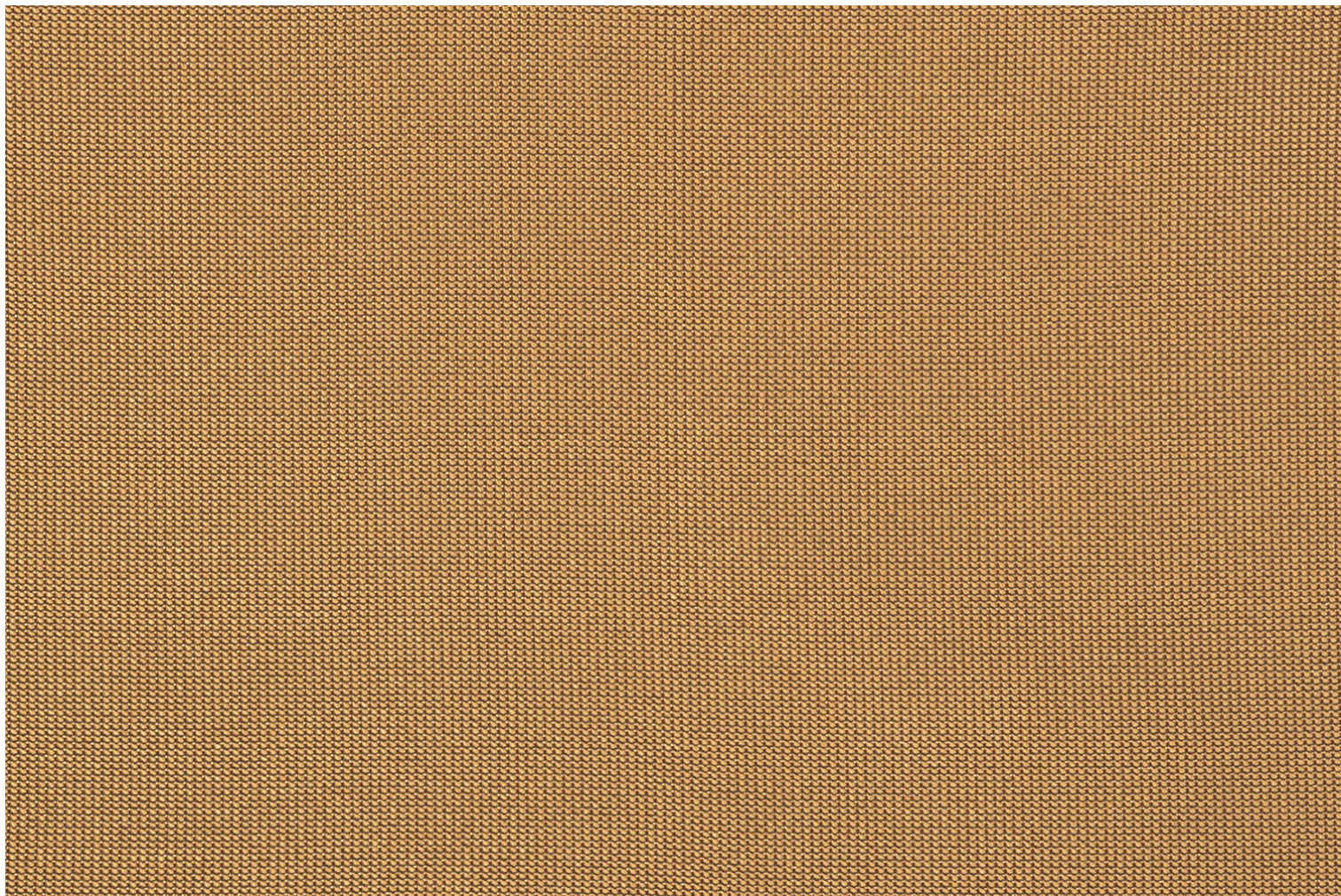
Collection	CONTRACT 25
Marque	LELIEVRE CONTRACT

FICHE TECHNIQUE

Composition	Polyester FR 100%
Largeur	138 cm
Coupe au raccord	Non
Raccord sauté	Non
Entretien	   
Utilisations	   
Test Martindale	50 000 T
Poids ML	700 g
Code feu	M1

LELIEVRE

PARIS



lelievrepairs.com
contact@lelievrepairs.com

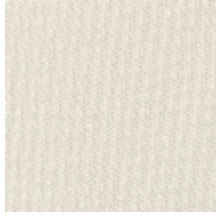
LELIEVRE

PARIS

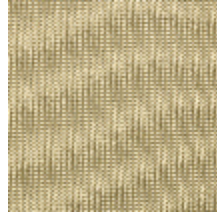
Coloris disponibles



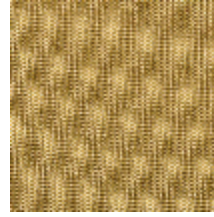
4257-01
**PLATINE M1 -
TITANE**



4257-02
**PLATINE M1 -
NACRE**



4257-03
**PLATINE M1 -
VERMEIL**



4257-04
PLATINE M1 - OR



4257-05
**PLATINE M1 -
DORE**



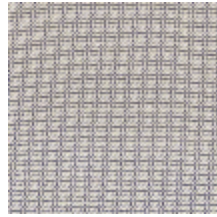
4257-06
**PLATINE M1 -
MORDORE**



4257-07
**PLATINE M1 -
CUIVRE**



4257-08
**PLATINE M1 -
BRONZE**



4257-09
**PLATINE M1 -
PALLADIUM**



4257-10
**PLATINE M1 -
ZINC**

PLATINE M1 – MORDORE

4257-06

