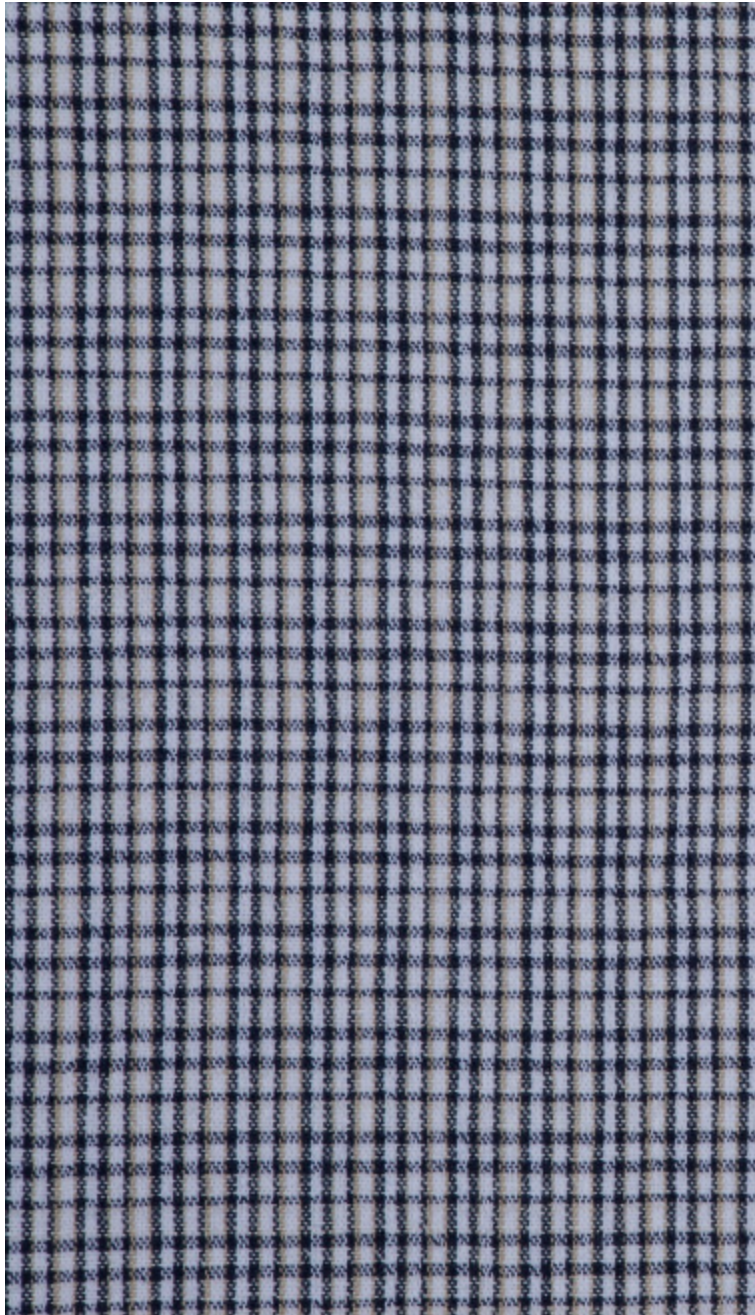


CAMBREMER - ENCRE

4265-12



Disponible en 15 coloris et composé à 100% de fibres naturelles (lin, coton et chanvre), CAMBREMER revisite le célèbre motif Vichy avec un effet vintage lavé, irrégulier dans son design. Avec son élégant tombé, il est parfait en rideau.

Collection	BELLE ÉPOQUE
------------	--------------

Marque	QUENIN
--------	--------

FICHE TECHNIQUE

Composition	Coton 50% - Lin 25% - Chanvre 25%
-------------	--------------------------------------

Largeur	150 cm
---------	--------

Coupe au raccord	Non
------------------	-----

Raccord vertical	2 cm
------------------	------

Raccord horizontal	2 cm
--------------------	------

Raccord sauté	Non
---------------	-----

Entretien	   
-----------	---

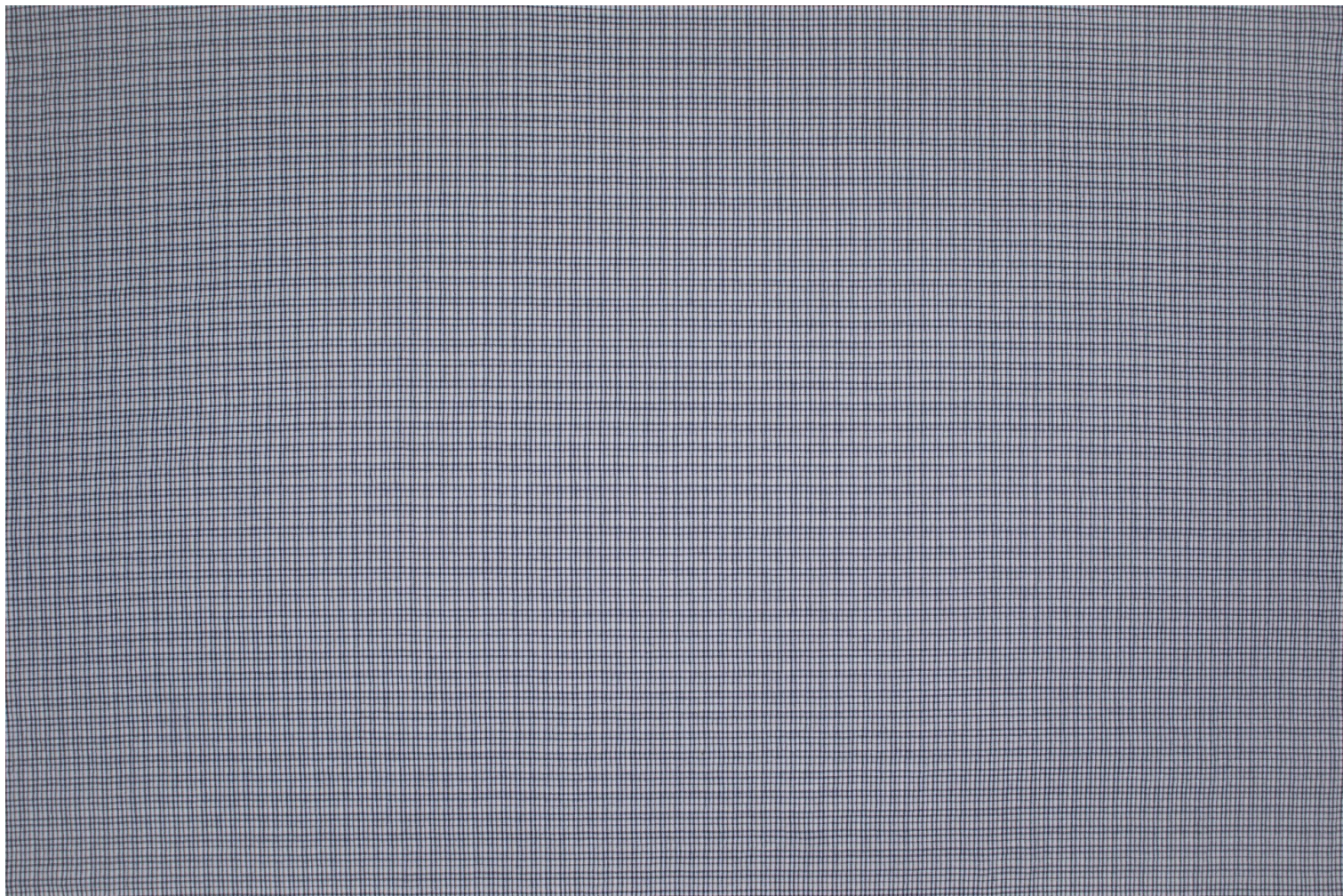
Utilisations	   
--------------	---

Test Martindale	20 000 T
-----------------	----------

Poids ML	410 g
----------	-------

LELIEVRE

PARIS



LELIEVRE

PARIS

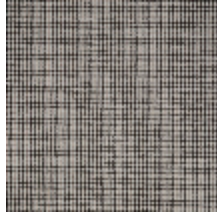
Coloris disponibles



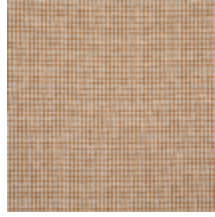
4265-01
**CAMBREMER -
PERLE**



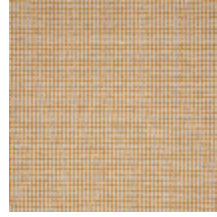
4265-02
**CAMBREMER -
BEIGE**



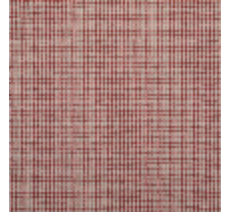
4265-03
**CAMBREMER -
ÉBÈNE**



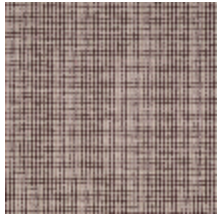
4265-04
**CAMBREMER -
OCRE**



4265-05
**CAMBREMER -
TOURNESOL**



4265-06
**CAMBREMER -
CORNALINE**



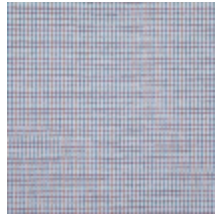
4265-07
**CAMBREMER -
BURGUNDY**



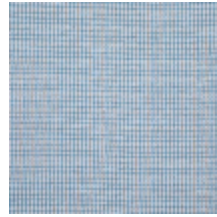
4265-08
**CAMBREMER -
GRLOTTE**



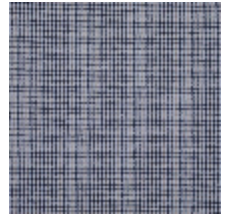
4265-09
**CAMBREMER -
PÉTALE**



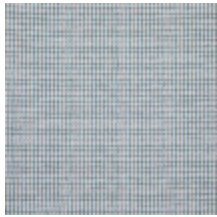
4265-10
**CAMBREMER -
PORCELAINE**



4265-11
**CAMBREMER -
CIEL**



4265-12
**CAMBREMER -
ENCRE**



4265-13
**CAMBREMER -
AGAVE**



4265-14
**CAMBREMER -
PRAIRIE**



4265-15
**CAMBREMER -
KAKI**

CAMBREMER - ENCRE

4265-12

