

**BRINDILLE - NATTIER**

4280-02



Sur fond satiné, BRINDILLE déploie un motif floral stylisé à l'échelle intime. Tissé dans la manufacture de la Maison Lelièvre, il incarne la grâce discrète d'un motif intemporel, doux et affirmé.

---

Collection	FESTIVITÉS
------------	------------

---

Marque	QUENIN
--------	--------

---

**FICHE TECHNIQUE**

---

Type	Jacquard
------	----------

---

Composition	80% Coton - 20% Polyamide
-------------	---------------------------

---

Largeur	140 cm
---------	--------

---

Coupe au raccord	Non
------------------	-----

---

Raccord vertical	14 cm
------------------	-------


---

Raccord horizontal	14 cm
--------------------	-------

---

Raccord sauté	Non
---------------	-----

---

Entretien	  
-----------	---

---

Utilisations	   
--------------	---

---

Test Martindale	40 000 T
-----------------	----------

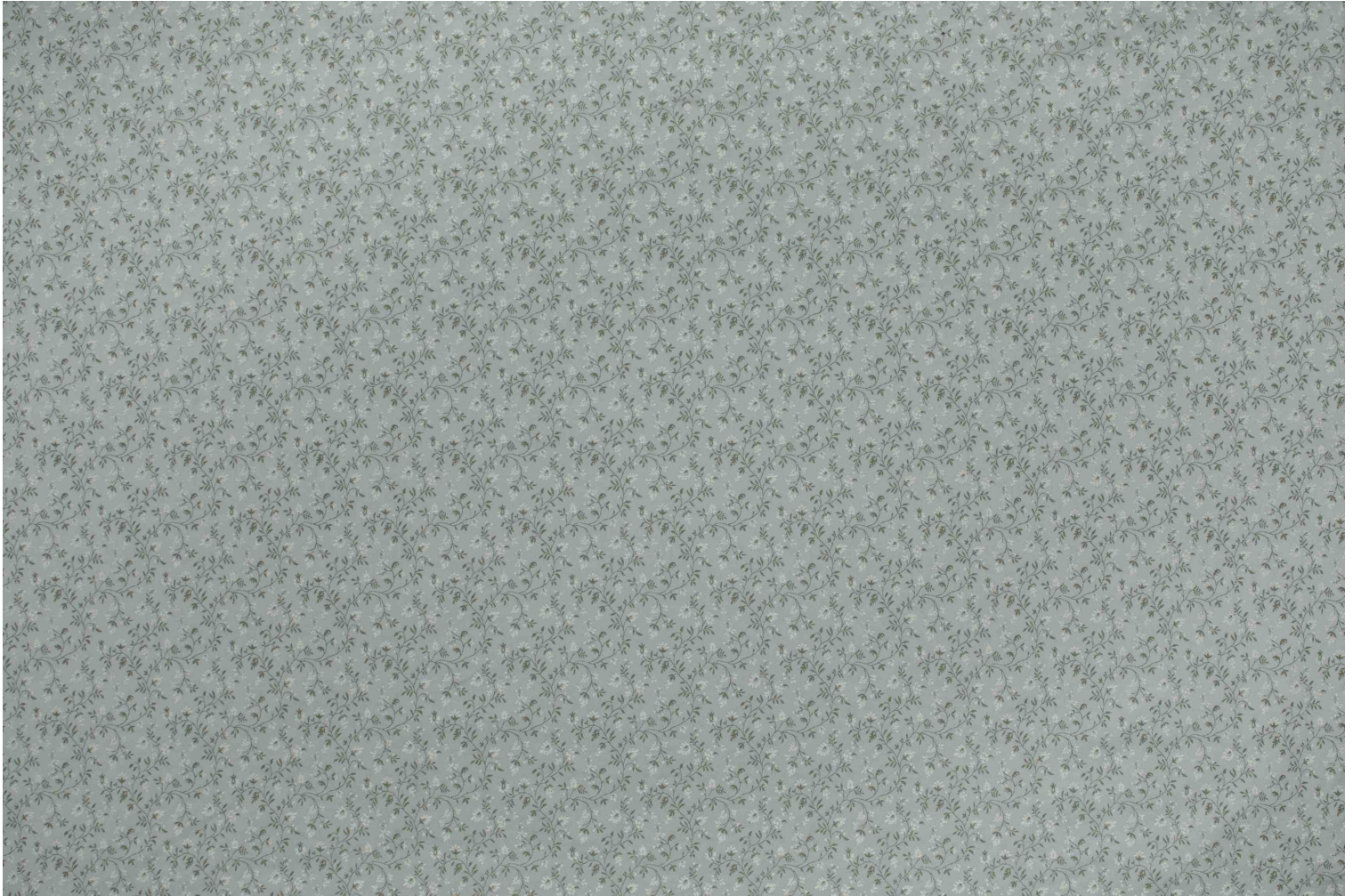
---

Poids ML	450 g
----------	-------

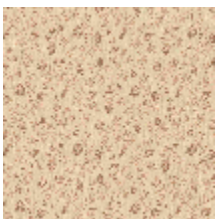
---

# LELIEVRE

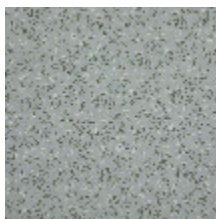
PARIS



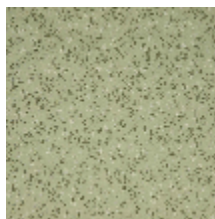
## Coloris disponibles



4280-01  
**BRINDILLE -  
NATUREL**



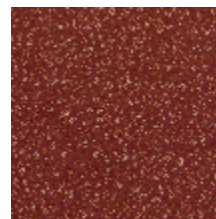
4280-02  
**BRINDILLE -  
NATTIER**



4280-03  
**BRINDILLE -  
AMANDE**



4280-04  
**BRINDILLE - DORE**



4280-05  
**BRINDILLE -  
ACAJOU**



4280-06  
**BRINDILLE - NOIR**



# LELIEVRE

PARIS

## BRINDILLE - NATTIER

4280-02

