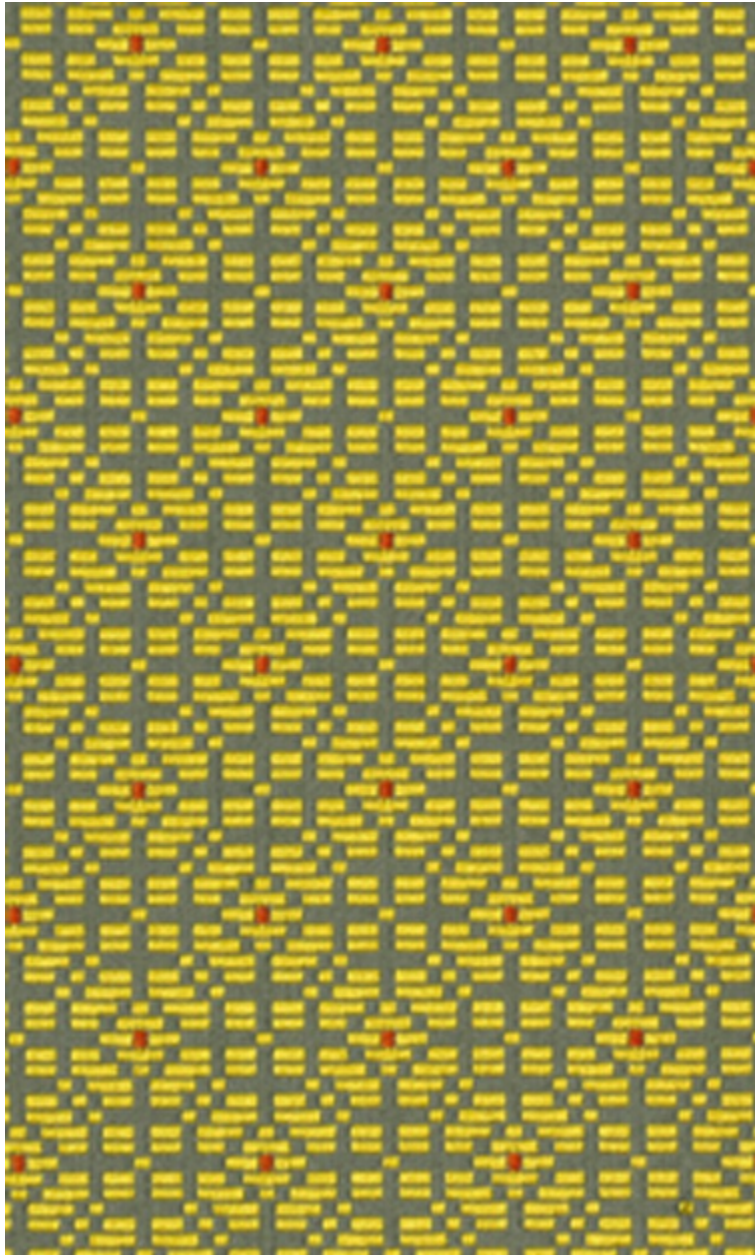


**PALANQUIN - CHROME \***

0487-02



Tout à la fois ornemental et géométrique, cette qualité joue des harmonies variées avec un dessin très stylisé. Une belle structure de fond mat construit en jacquard un faux-uni plus précieux. Un éclat de couleur vient chahuter discrètement cette marqueterie de paille fine, ciselée en bâtonnets délicats.

---

Collection	ESSENTIEL 2015
------------	----------------

---

Marque	LELIEVRE
--------	----------

---

**FICHE TECHNIQUE**

---

Composition	Viscose 85% - Coton 13% - Polyamide 2%
-------------	---

---

Largeur	138 cm
---------	--------

---

Coupe au raccord	Non
------------------	-----

---

Raccord sauté	Non
---------------	-----

---

Entretien	   
-----------	---

---

Utilisations	   
--------------	---

---

Test Martindale	30 000 T
-----------------	----------

---

Poids ML	714 g
----------	-------

---



# LELIEVRE

PARIS



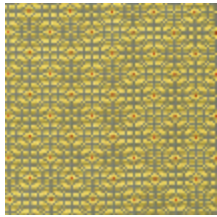
[lelievrepairs.com](http://lelievrepairs.com)  
[contact@lelievrepairs.com](mailto:contact@lelievrepairs.com)



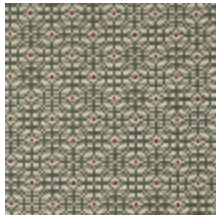
# LELIEVRE

PARIS

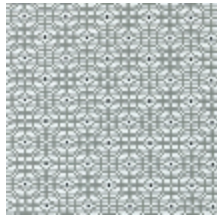
## Coloris disponibles



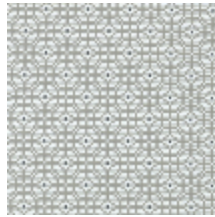
0487-02  
**PALANQUIN -  
CHROME \***



0487-03  
**PALANQUIN -  
PLATINE \***



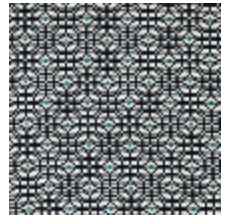
0487-04  
**PALANQUIN -  
CRAIE \***



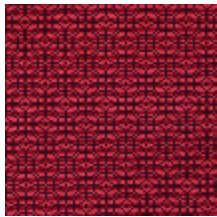
0487-05  
**PALANQUIN -  
DUNE \***



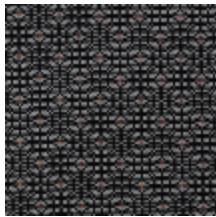
0487-06  
**PALANQUIN -  
PAILLE \***



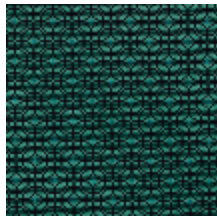
0487-07  
**PALANQUIN -  
NAVY \***



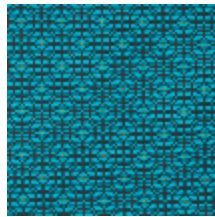
0487-09  
**PALANQUIN -  
GRENAT \***



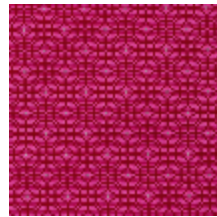
0487-12  
**PALANQUIN -  
OMBRE \***



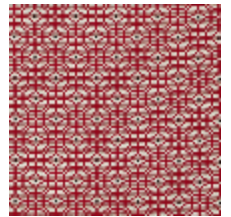
0487-13  
**PALANQUIN -  
EMERAUDE \***



0487-15  
**PALANQUIN -  
CURACAO \***



0487-16  
**PALANQUIN -  
FRAISE \***



0487-17  
**PALANQUIN -  
ROUGE \***



# LELIEVRE

PARIS

## PALANQUIN - CHROME \*

0487-02

