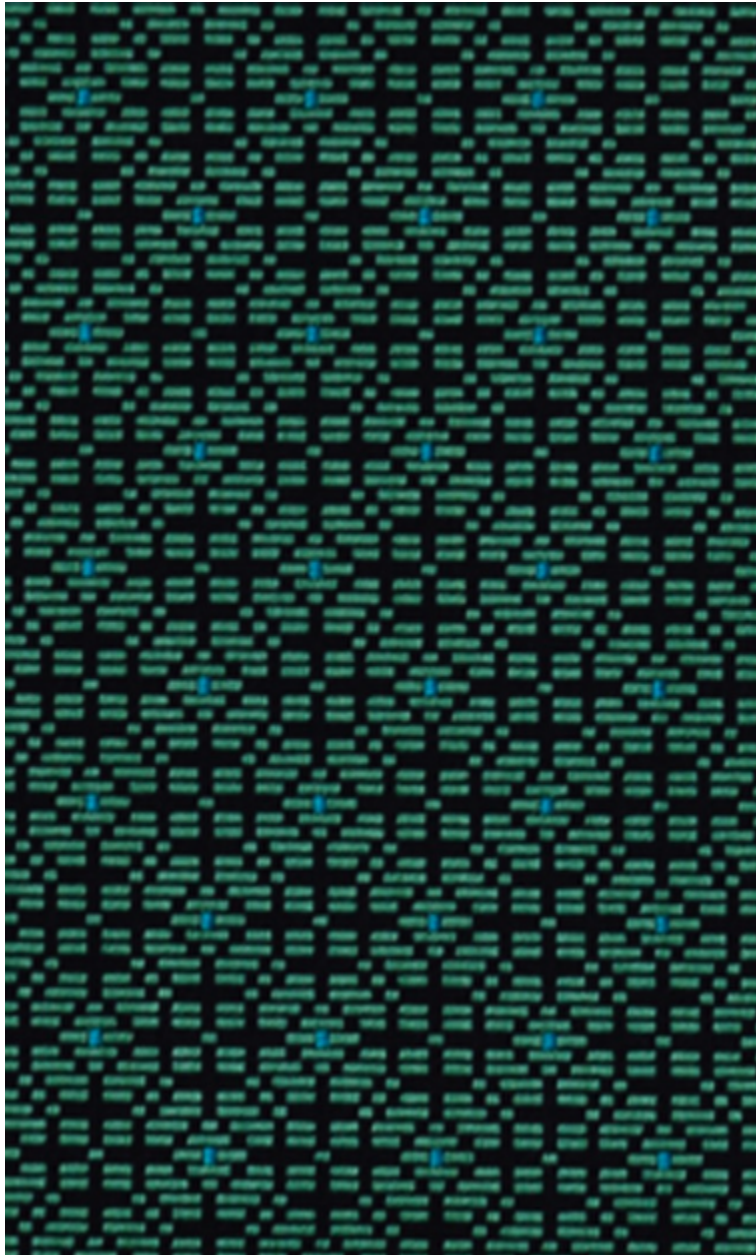


PALANQUIN - EMERAUDE *









0487-13



Tout à la fois ornemental et géométrique, cette qualité joue des harmonies variées avec un dessin très stylisé. Une belle structure de fond mat construit en jacquard un faux-uni plus précieux. Un éclat de couleur vient chahuter discrètement cette marqueterie de paille fine, ciselée en bâtonnets délicats.

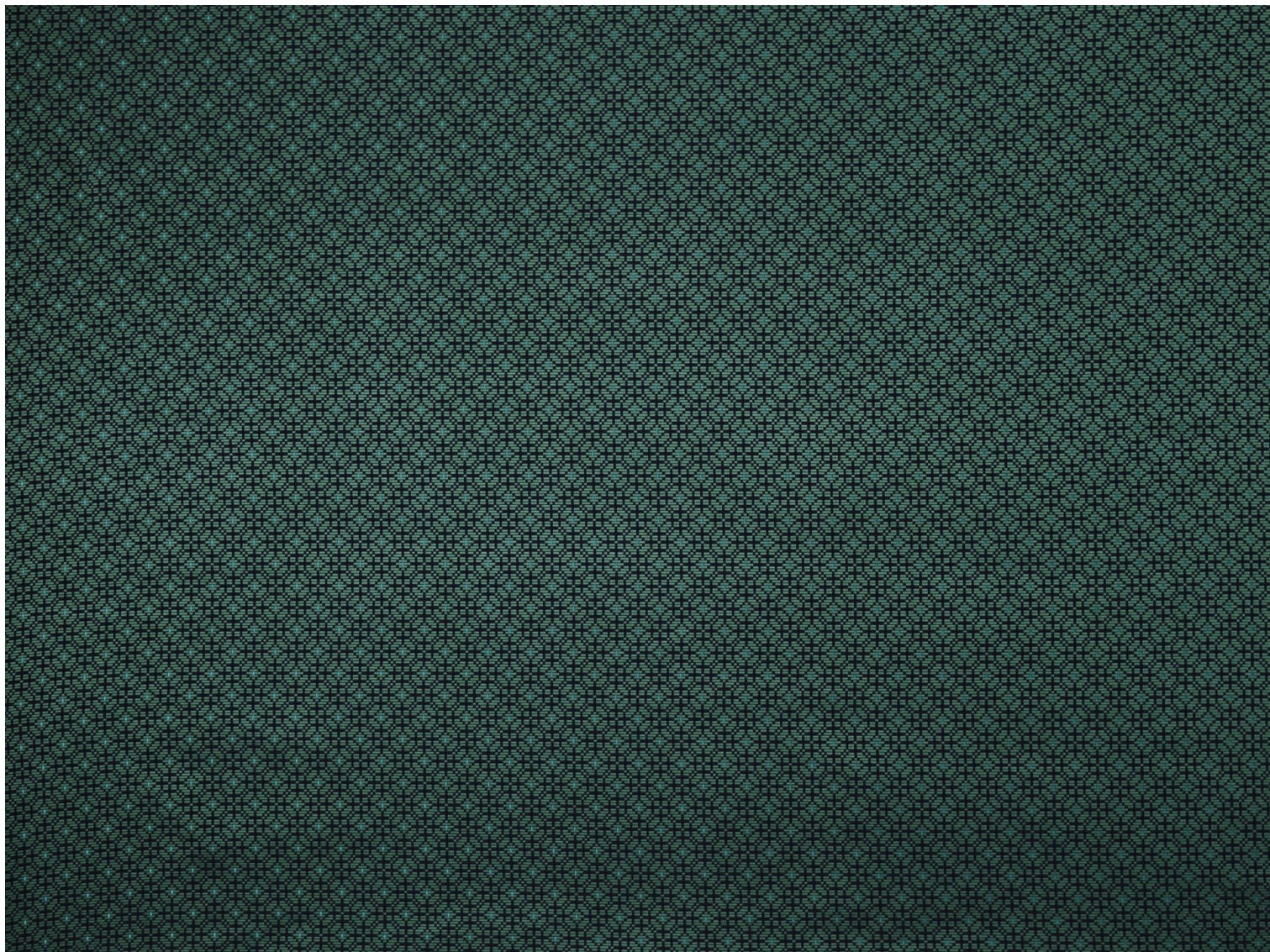
| | |
|------------|----------------|
| Collection | ESSENTIEL 2015 |
| Marque | LELIEVRE PARIS |

FICHE TECHNIQUE

| | |
|------------------|---|
| Composition | Viscose 85% - Coton 13% - Polyamide 2% |
| Largeur | 138 cm |
| Coupe au raccord | Non |
| Raccord sauté | Non |
| Entretien |     |
| Utilisations |     |
| Test Martindale | 30 000 T |
| Poids ML | 714 g |

LELIEVRE

PARIS

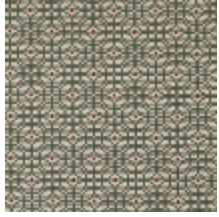


lelievrepairs.com
contact@lelievrepairs.com

LELIEVRE

PARIS

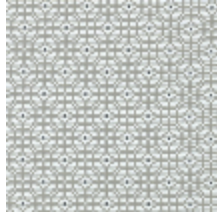
Coloris disponibles



0487-03
**PALANQUIN -
PLATINE ***



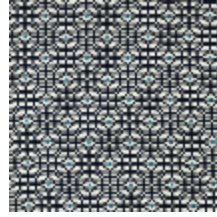
0487-04
**PALANQUIN -
CRAIE ***



0487-05
**PALANQUIN -
DUNE ***



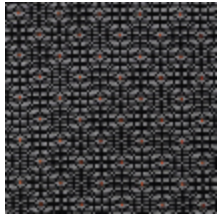
0487-06
**PALANQUIN -
PAILLE ***



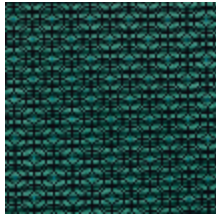
0487-07
**PALANQUIN -
NAVY ***



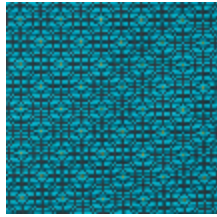
0487-09
**PALANQUIN -
GRENAT ***



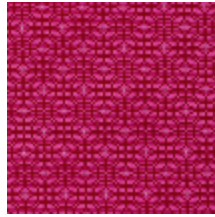
0487-12
**PALANQUIN -
OMBRE ***



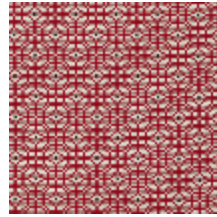
0487-13
**PALANQUIN -
EMERAUDE ***



0487-15
**PALANQUIN -
CURACAO ***



0487-16
**PALANQUIN -
FRAISE ***



0487-17
**PALANQUIN -
ROUGE ***

LELIEVRE

PARIS

PALANQUIN - EMERAUDE *

0487-13

