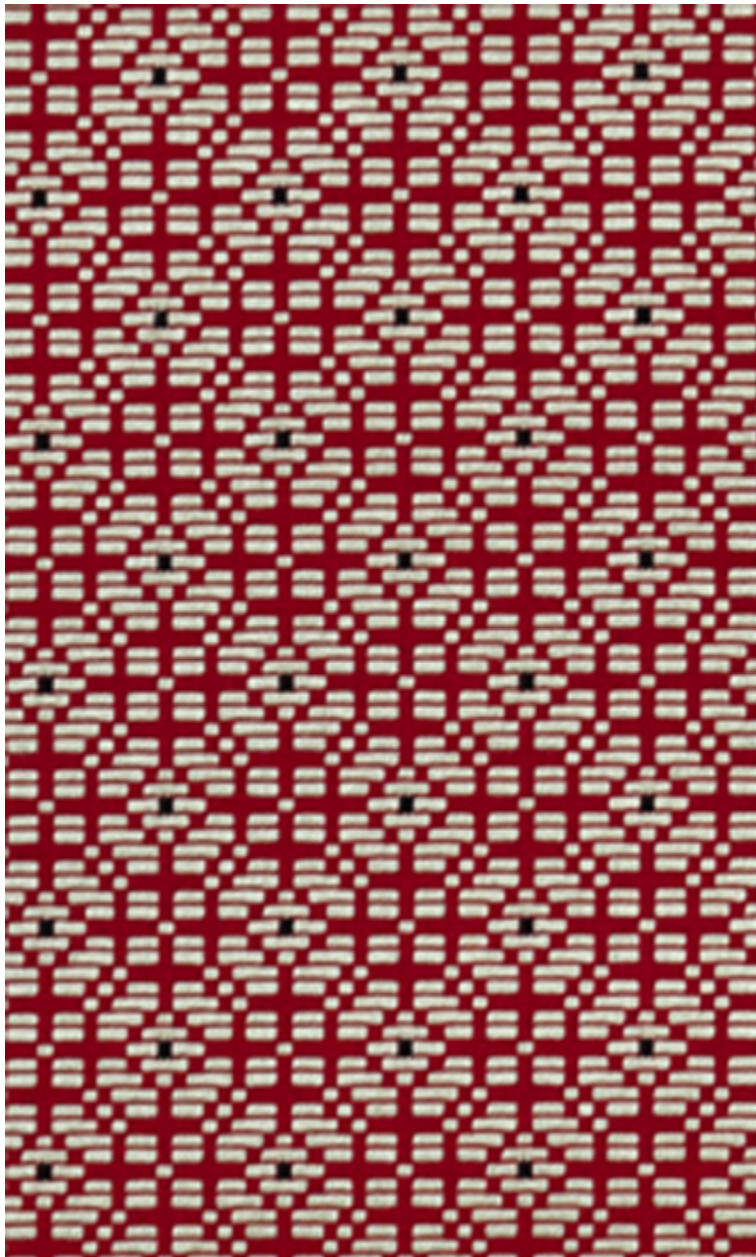


PALANQUIN - ROUGE *

0487-17



Tout à la fois ornemental et géométrique, cette qualité joue des harmonies variées avec un dessin très stylisé. Une belle structure de fond mat construit en jacquard un faux-uni plus précieux. Un éclat de couleur vient chahuter discrètement cette marqueterie de paille fine, ciselée en bâtonnets délicats.

Collection	ESSENTIEL 2015
------------	----------------

Marque	LELIEVRE
--------	----------


FICHE TECHNIQUE

Composition	Viscose 85% - Coton 13% - Polyamide 2%
-------------	---

Largeur	138 cm
---------	--------

Coupe au raccord	Non
------------------	-----

Raccord sauté	Non
---------------	-----

Entretien	   
-----------	---

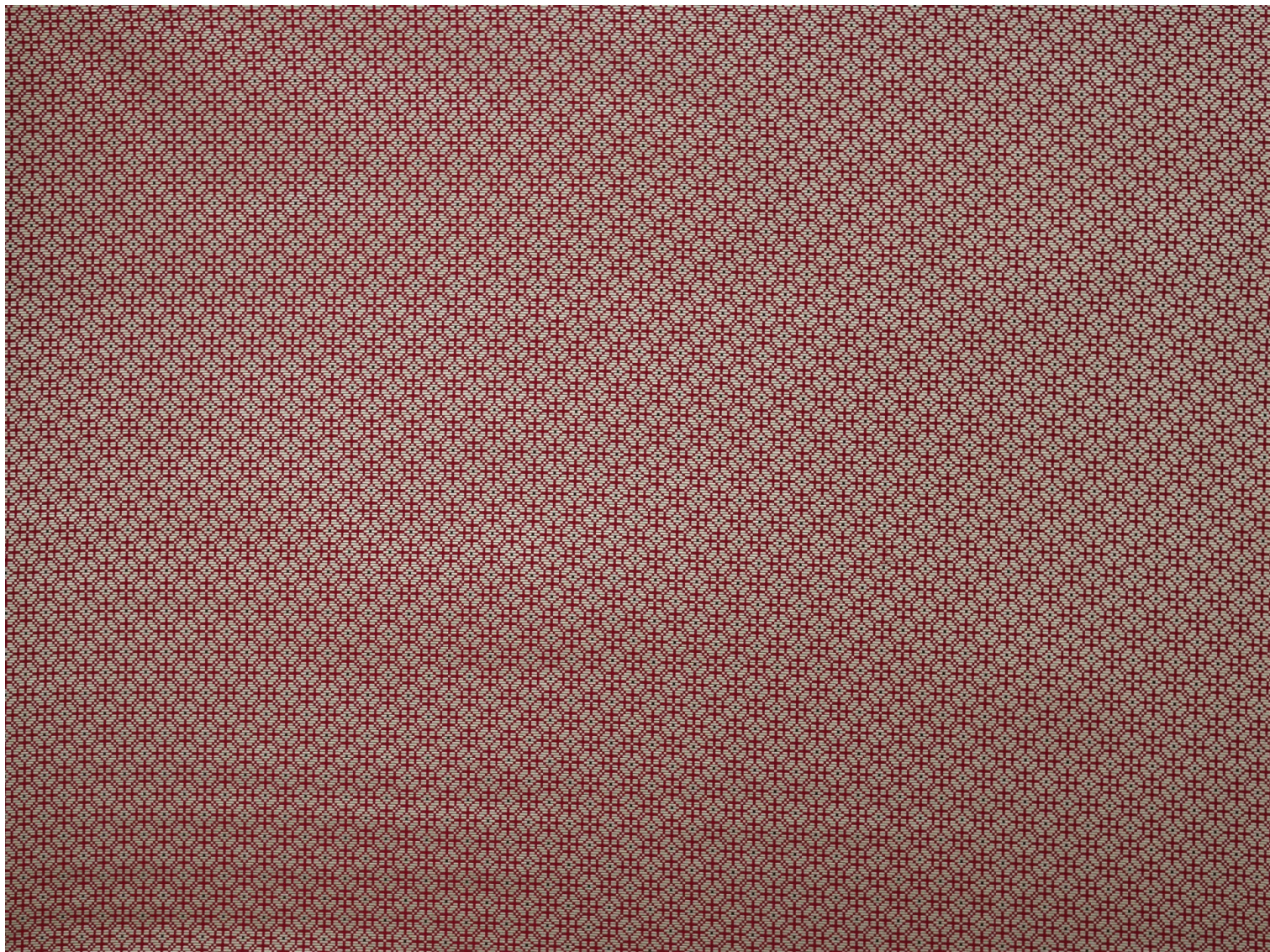
Utilisations	   
--------------	---

Test Martindale	30 000 T
-----------------	----------

Poids ML	714 g
----------	-------

LELIEVRE

PARIS

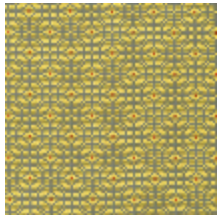


lelievrepairs.com
contact@lelievrepairs.com

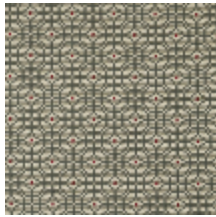
LELIEVRE

PARIS

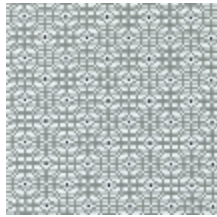
Coloris disponibles



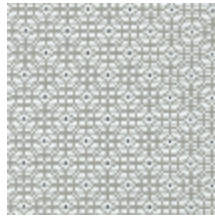
0487-02
**PALANQUIN -
CHROME ***



0487-03
**PALANQUIN -
PLATINE ***



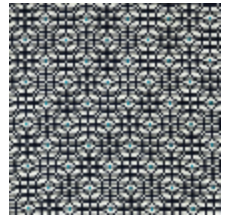
0487-04
**PALANQUIN -
CRAIE ***



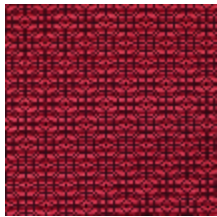
0487-05
**PALANQUIN -
DUNE ***



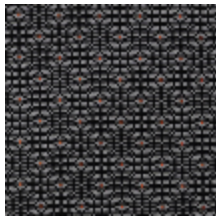
0487-06
**PALANQUIN -
PAILLE ***



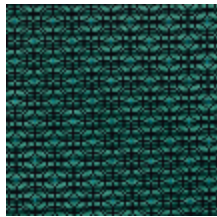
0487-07
**PALANQUIN -
NAVY ***



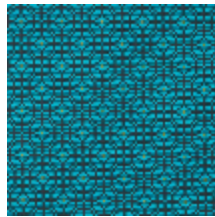
0487-09
**PALANQUIN -
GRENAT ***



0487-12
**PALANQUIN -
OMBRE ***



0487-13
**PALANQUIN -
EMERAUDE ***



0487-15
**PALANQUIN -
CURACAO ***



0487-16
**PALANQUIN -
FRAISE ***



0487-17
**PALANQUIN -
ROUGE ***

LELIEVRE

PARIS

PALANQUIN - ROUGE *

0487-17

