

**TRINIDAD - PETALE**

5052-19



TRINIDAD, qualité qui offre un superbe aspect lin, tout en alliant une souplesse et une douceur exceptionnelle et un tombé élégant. Ce tissu reproduit à la perfection le toucher et l'aspect du lin naturel, tout en conservant les qualités techniques d'une matière adaptée à un usage In/Outdoor.

---

Collection	ILES DU VENT
------------	--------------

---

Marque	LELIÈVRE PARIS OUTDOOR
--------	------------------------

---

**FICHE TECHNIQUE**

---

Type	Outdoor
------	---------

---

Composition	SOLUTION DYED ACRYLIC 100%
-------------	----------------------------

---

Largeur	145 cm
---------	--------

---

Coupe au raccord	Non
------------------	-----

---

Raccord sauté	Non
---------------	-----

---

Entretien	   
-----------	---

---

Utilisations	    
--------------	---

---

Test Martindale	30 000 T
-----------------	----------

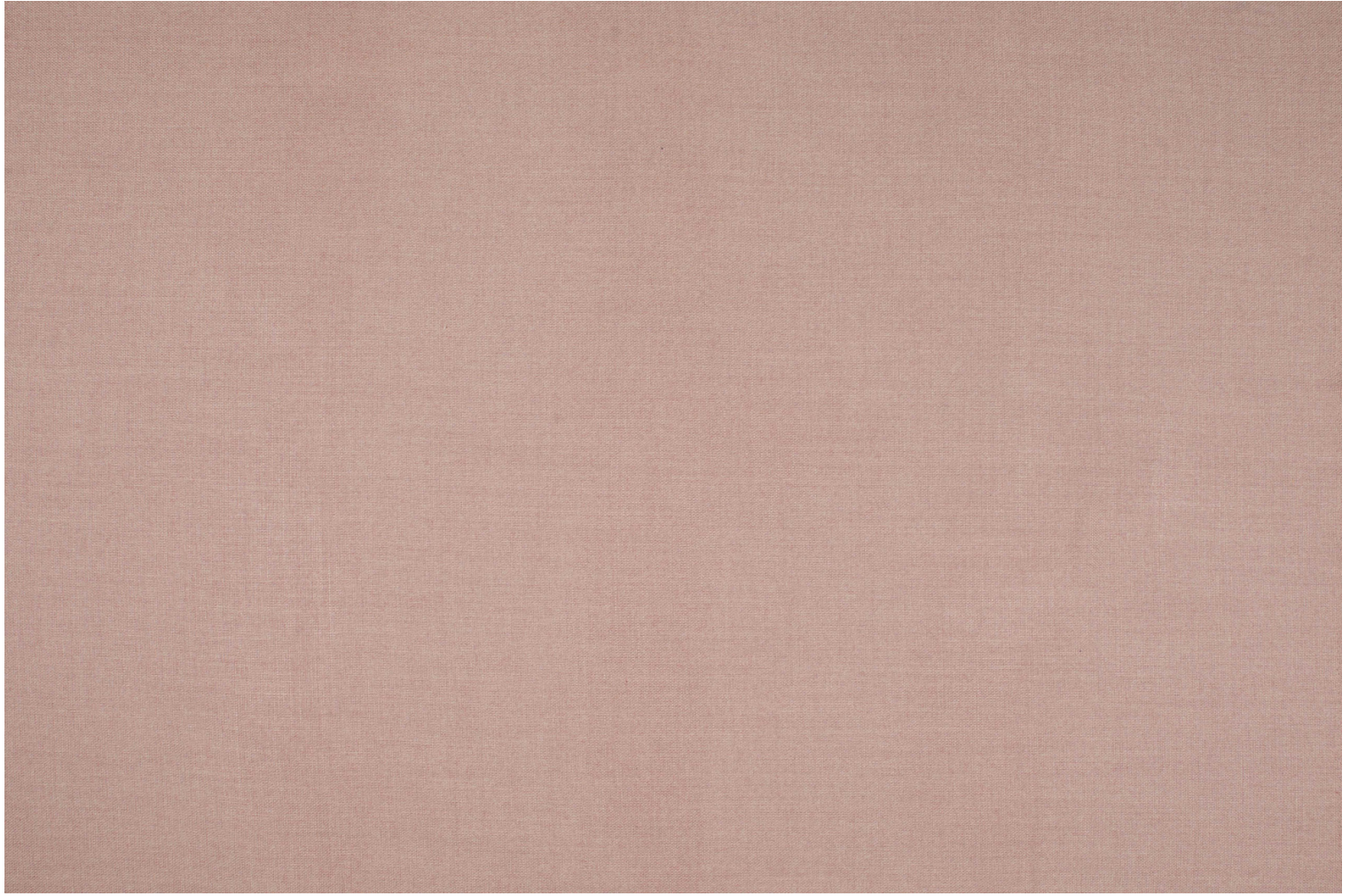
---

Poids ML	770 g
----------	-------

---

LELIEVRE

PARIS



# LELIEVRE

PARIS

## Coloris disponibles



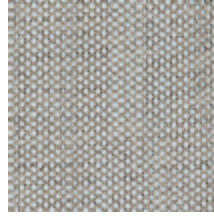
5052-01  
**TRINIDAD -  
BLANC**



5052-02  
**TRINIDAD - ECRU**



5052-03  
**TRINIDAD - BEIGE**



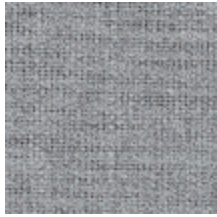
5052-04  
**TRINIDAD -  
NATUREL**



5052-05  
**TRINIDAD - LIN**



5052-06  
**TRINIDAD -  
GALET**



5052-07  
**TRINIDAD - GRIS**



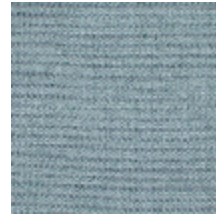
5052-08  
**TRINIDAD -  
CENDRE**



5052-09  
**TRINIDAD -  
ENCRE**



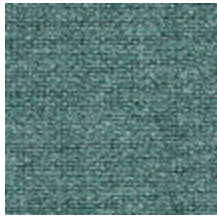
5052-10  
**TRINIDAD -  
BLEUET**



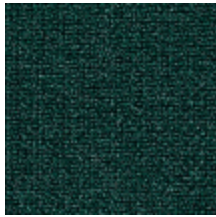
5052-11  
**TRINIDAD - AZUR**



5052-12  
**TRINIDAD -  
OPALE**



5052-13  
**TRINIDAD -  
AGAVE**



5052-14  
**TRINIDAD -  
CEDRE**



5052-15  
**TRINIDAD -  
BRONZE**



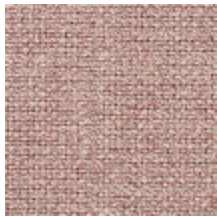
5052-16  
**TRINIDAD - BLE**



5052-17  
**TRINIDAD - OCRE**



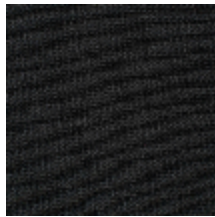
5052-18  
**TRINIDAD - VIEUX  
ROSE**



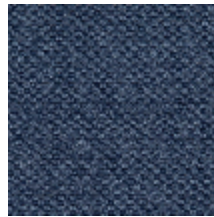
5052-19  
**TRINIDAD -  
PETALE**



5052-20  
**TRINIDAD -  
MOKA**



5052-21  
**TRINIDAD - NOIR**



5052-22  
**TRINIDAD -  
DENIM**



5052-23  
**TRINIDAD -  
TOMETTE**

**TRINIDAD - PETALE**

5052-19

