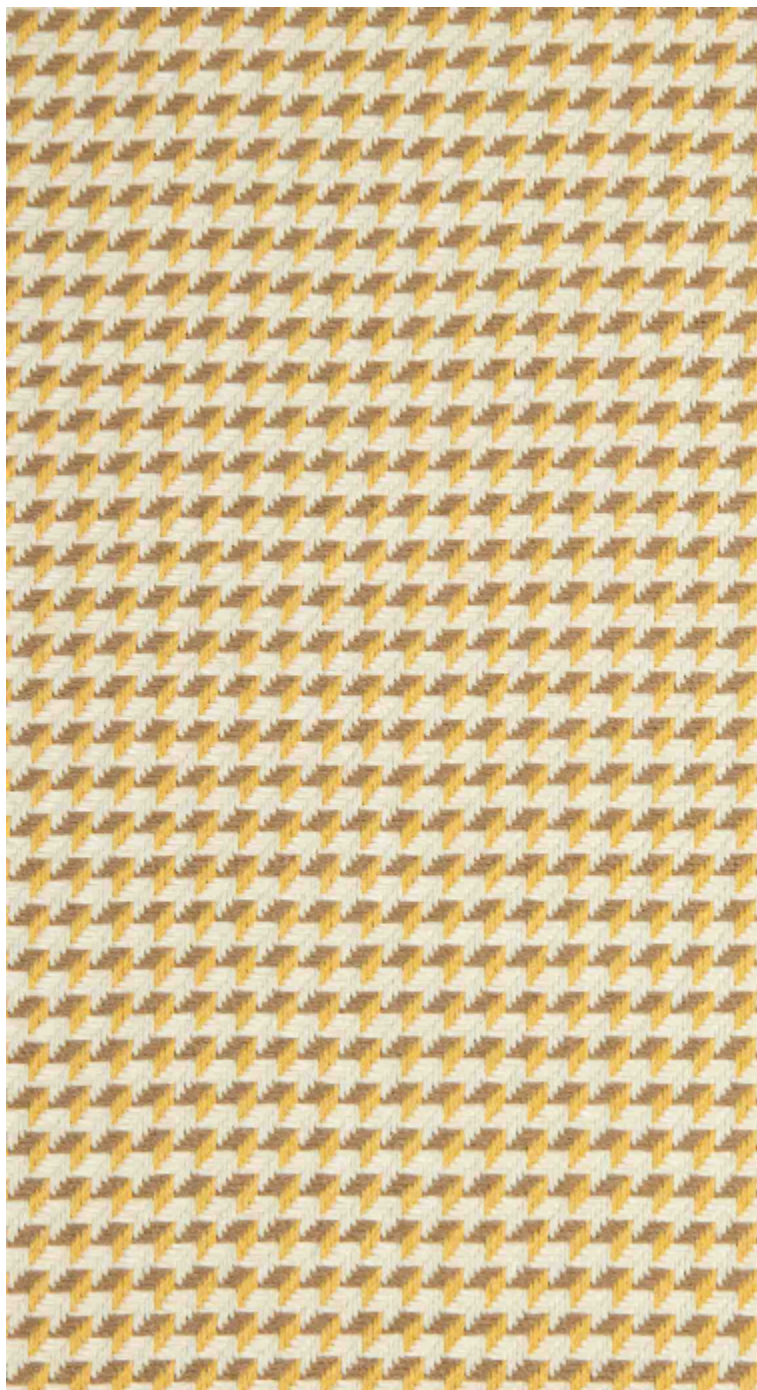


**CANNAGE - DORE**

5078-02



Tissé comme un ruban de rafia, CANNAGE joue avec les contrastes et les reflets. Son motif géométrique évoque la précision du tressage, entre tradition et modernité.

---

Collection	ESCALES LOINTANES
------------	-------------------

---

Marque	LELIEVRE PARIS
--------	----------------

---

**FICHE TECHNIQUE**

---

Type	Jacquard
------	----------

---

Composition	60%Coton - 20%Polyester - 16%Polyéthylène - 4%Autres fibres
-------------	---

---

Largeur	144 cm
---------	--------

---

Coupe au raccord	Non
------------------	-----

---

Raccord vertical	1 cm
------------------	------


---

Raccord horizontal	1 cm
--------------------	------

---

Raccord sauté	Non
---------------	-----

---

Entretien	   
-----------	---

---

Utilisations	  
--------------	---

---

Test Martindale	100 000 T
-----------------	-----------

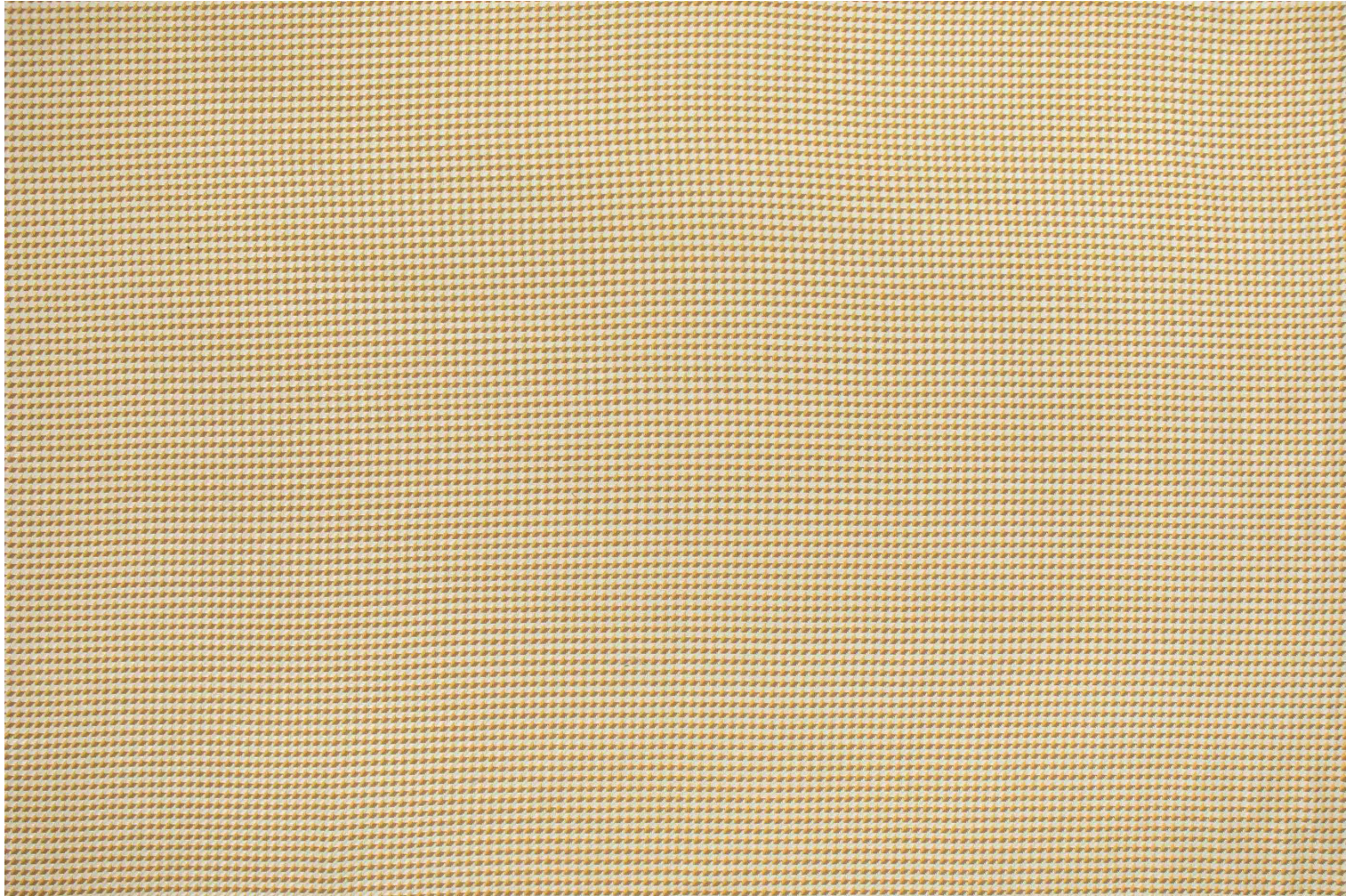
---

Poids ML	860 g
----------	-------

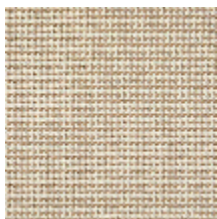
---

# LELIEVRE

PARIS



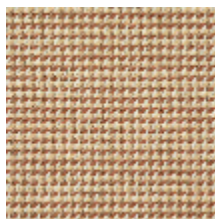
## Coloris disponibles



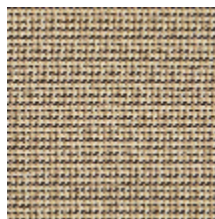
5078-01  
**CANNAGE -  
BEIGE**



5078-02  
**CANNAGE - DORE**



5078-03  
**CANNAGE -  
TERRACOTTA**



5078-04  
**CANNAGE -  
POIVRE**



5078-05  
**CANNAGE -  
AGAVE**

**CANNAGE - DORE**

5078-02

# LELIEVRE

PARIS

LELIEVRE

PARIS

