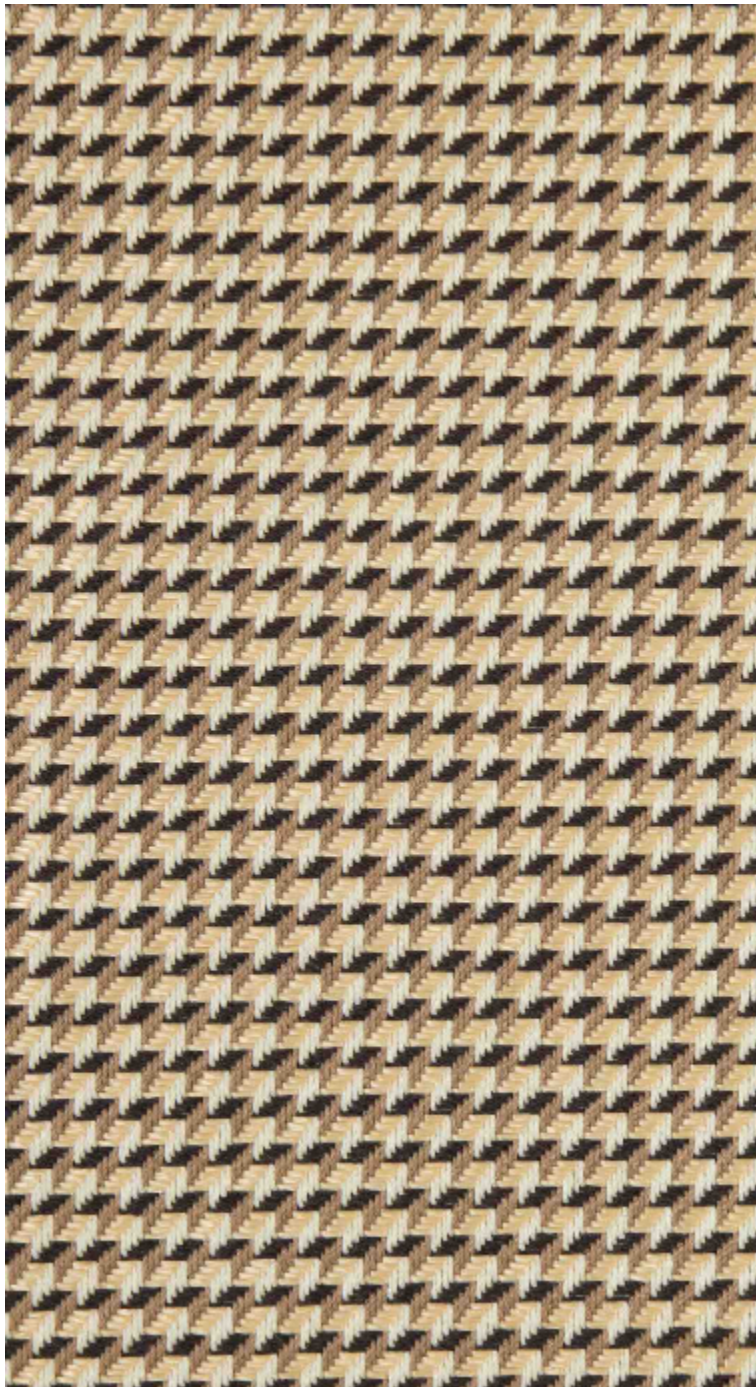


CANNAGE - POIVRE

5078-04



Tissé comme un ruban de rafia, CANNAGE joue avec les contrastes et les reflets. Son motif géométrique évoque la précision du tressage, entre tradition et modernité.

Collection	ESCALES LOINTANES
------------	-------------------

Marque	LELIÈVRE PARIS
--------	----------------

FICHE TECHNIQUE

Type	Jacquard
------	----------

Composition	60%Coton - 20%Polyester - 16%Polyéthylène - 4%Autres fibres
-------------	---

Largeur	144 cm
---------	--------


Coupe au raccord	Non
------------------	-----

Raccord vertical	1 cm
------------------	------

Raccord horizontal	1 cm
--------------------	------

Raccord sauté	Non
---------------	-----

Entretien	   
-----------	---

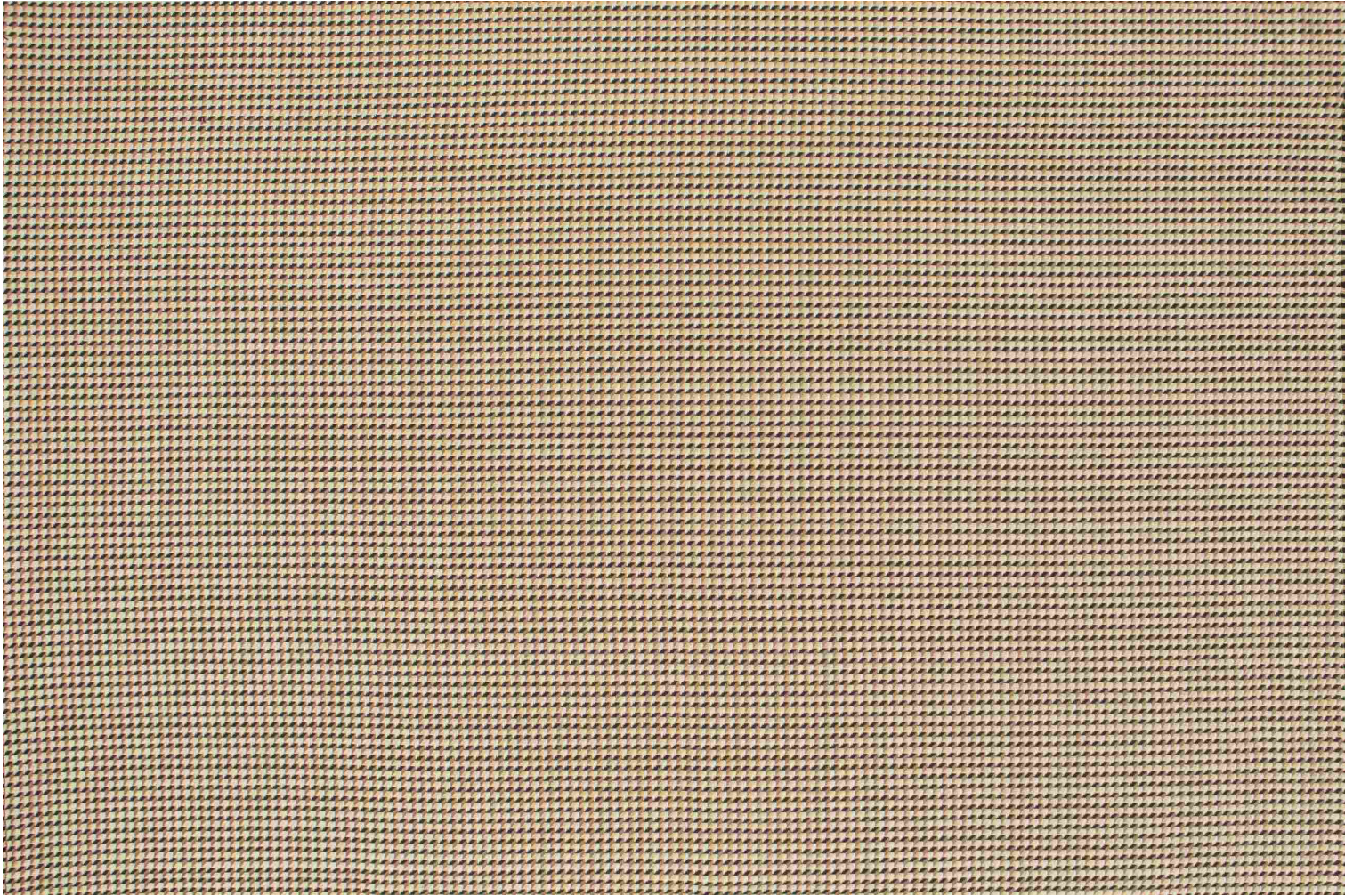
Utilisations	  
--------------	---

Test Martindale	100 000 T
-----------------	-----------

Poids ML	860 g
----------	-------

LELIEVRE

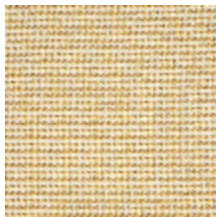
PARIS



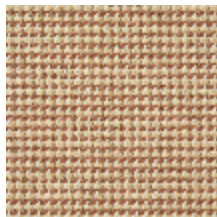
Coloris disponibles



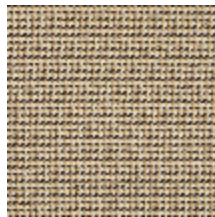
5078-01
**CANNAGE -
BEIGE**



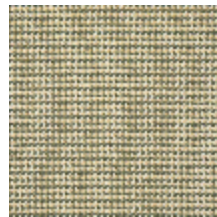
5078-02
CANNAGE - DORE



5078-03
**CANNAGE -
TERRACOTTA**



5078-04
**CANNAGE -
POIVRE**



5078-05
**CANNAGE -
AGAVE**

CANNAGE - POIVRE

5078-04

LELIEVRE

PARIS

LELIEVRE

PARIS

