

## FUJI - SARCELLE

0552-01



Fuji est une matière douce et dense née de l'assemblage délicat d'un fil de chenille et d'une fine bouclette. Sa palette de 24 nuances s'équilibre entre tons naturels et vifs profonds. La matité vibrante de cette qualité recrée la richesse chromatique du pigment. Le toucher sensuel invite à la réalisation d'assises accueillantes.









---

Collection	L'ART ET LA MATIERE
Marque	LELIEVRE

---

## FICHE TECHNIQUE

---

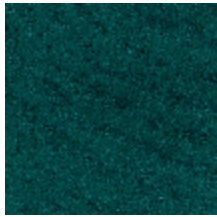
Composition	Viscose 55% - Coton 25% - Polyester 15% - Polyamide 5%
Largeur	140 cm
Coupe au raccord	Non
Raccord sauté	Non
Entretien	   
Utilisations	   
Test Martindale	35 000 T
Poids ML	860 g

---

# LELIEVRE

PARIS

## Coloris disponibles



0552-01  
**FUJI - SARCELLE**



0552-02  
**FUJI - EMERAUDE**



0552-03  
**FUJI - INDIGO**



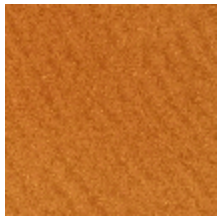
0552-04  
**FUJI - ORAGE**



0552-05  
**FUJI - BURGUNDY**  
\*



0552-06  
**FUJI - RUBIS**



0552-08  
**FUJI - KUMQUAT**



0552-09  
**FUJI - PIMENT**



0552-10  
**FUJI - NYMPHE**



0552-11  
**FUJI - FICELLE**



0552-12  
**FUJI -  
TOURTERELLE**



0552-13  
**FUJI - MASTIC**



0552-14  
**FUJI - TALC**



0552-15  
**FUJI - LIEGE**



0552-16  
**FUJI - PAILLE**



0552-17  
**FUJI - SOUFRE**



0552-18  
**FUJI - MOUSSE**



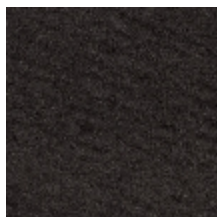
0552-19  
**FUJI - VERT DE  
GRIS**



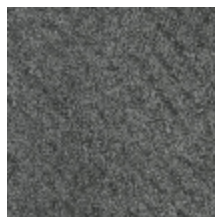
0552-20  
**FUJI - GRANIT**



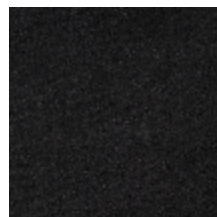
0552-21  
**FUJI - FUMEE**



0552-22  
**FUJI - ELEPHANT**



0552-23  
**FUJI - ISLANDE**



0552-24  
**FUJI - KHOL**

**FUJI - SARCELLE**

0552-01

