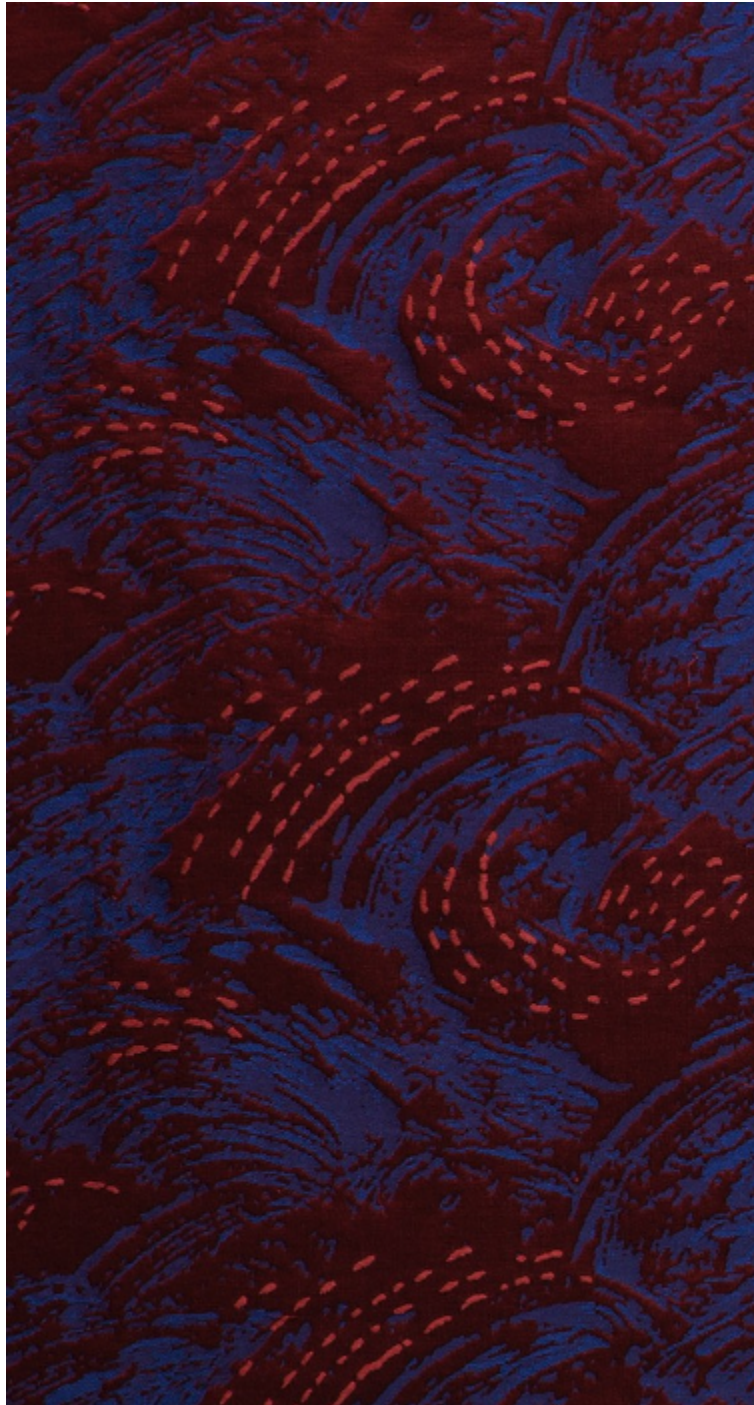


NAMI - LAQUE *








0555-06



Figée dans son mouvement, Nami qui signifie « vague » en japonais, anime la surface de cette brocatelle souple dans un bel effet de relief. La richesse de sa structure renvoie une délicate lumière conférant à cette soierie contemporaine une brillance subtile. Les aplats généreux du motif en satin rappellent l'écume des estampes.

| | |
|------------|---------------------|
| Collection | L'ART ET LA MATIERE |
| Marque | LELIEVRE PARIS |

FICHE TECHNIQUE

| | |
|--------------------|---|
| Type | Damas & Lampas |
| Composition | Lin 42% - Viscose 21% - Coton 19% - Soie 18% |
| Largeur | 140 cm |
| Coupe au raccord | Non |
| Raccord vertical | 29 cm |
| Raccord horizontal | 68 cm |
| Raccord sauté | Non |
| Entretien |    |
| Utilisations |     |
| Poids ML | 366 g |

LELIEVRE

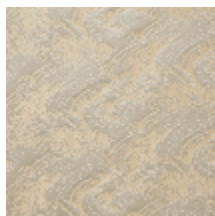
PARIS



Coloris disponibles



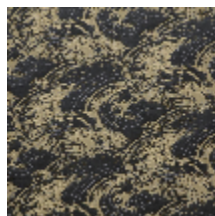
0555-01
NAMI - ECUME *



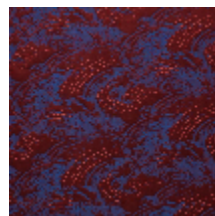
0555-03
NAMI - VERMEIL *



0555-04
NAMI - OPALINE *



0555-05
NAMI - ETAIN *



0555-06
NAMI - LAQUE *

NAMI - LAQUE *

0555-06

