

**WOOLY - AUBERGINE**

0633-07



Wooly, veloutine à l'aspect d'un drap de laine, est un tissu technique haute performance. Anti-tâche, il se nettoie facilement. Il est également antimicrobien, résiste à l'eau, aux moisissures et retient les odeurs. Il est entièrement recyclable. Cette qualité, destinée à une utilisation siège, se décline en 22 coloris offrant une belle palette de neutres et de coloris lumineux.

---

Marque	LELIEVRE
--------	----------

---

## FICHE TECHNIQUE

---

Composition	Polyester 100%
-------------	----------------

---

Largeur	140 cm
---------	--------

---

Coupe au raccord	Non
------------------	-----

---

Raccord sauté	Non
---------------	-----

---

Entretien	   
-----------	---

---

Utilisations	  
--------------	---

---

Test Martindale	40 000 T
-----------------	----------

---

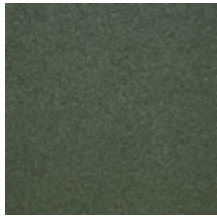
Poids ML	531 g
----------	-------

---

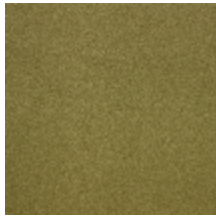
# LELIEVRE

PARIS

## Coloris disponibles



0633-01  
**WOOLY - FORET**



0633-02  
**WOOLY - PISTACHE**



0633-03  
**WOOLY - TILLEUL**



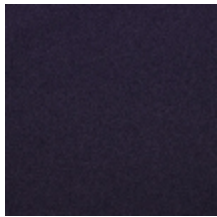
0633-04  
**WOOLY - SANGUINE**



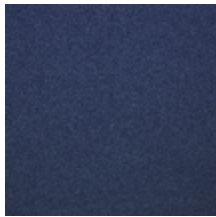
0633-05  
**WOOLY - RUBIS**



0633-06  
**WOOLY - FIGUE**



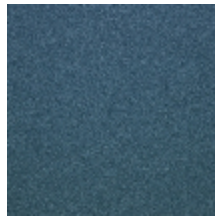
0633-07  
**WOOLY - AUBERGINE**



0633-08  
**WOOLY - MARINE**



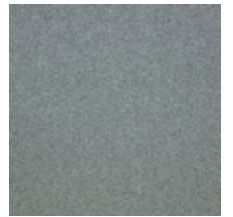
0633-09  
**WOOLY - DENIM**



0633-10  
**WOOLY - PETROLE**



0633-11  
**WOOLY - CELADON**



0633-12  
**WOOLY - CENDRE**



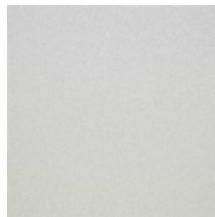
0633-13  
**WOOLY - ETAIN**



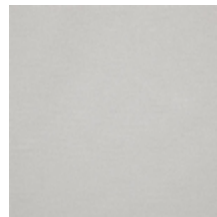
0633-14  
**WOOLY - SOURIS**



0633-15  
**WOOLY - GALET**



0633-16  
**WOOLY - PERLE**



0633-17  
**WOOLY - CRAIE**



0633-18  
**WOOLY - DUNE**



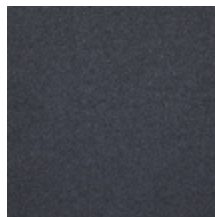
0633-19  
**WOOLY - SABLE**



0633-20  
**WOOLY - FICELLE**



0633-21  
**WOOLY - TAUPE**



0633-22  
**WOOLY - CHARBON**

**WOOLY - AUBERGINE**

0633-07

