

TAÏGA - CHAMOIS



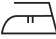




0638-10



Ce magnifique drap de laine est une première chez Lelièvre Paris. Basic chic et intemporel, il est proposé dans une très large gamme de 23 coloris. Des gris chinés, de nombreux naturels, de beaux classiques chocolat, camel aux bleus indigos ou aubergine plus profond... Toute la gamme est adaptée aux sièges et rideaux, il a une excellente résistance au boulochage et abrasion. Il s'associe parfaitement à tous les autres tissus de la collection BOREALIS.

Collection	BOREALIS
Marque	LELIÈVRE

FICHE TECHNIQUE

Composition	Laine 80% - Polyamide 20%
Largeur	154 cm
Coupe au raccord	Non
Raccord sauté	Non
Entretien	   
Utilisations	  
Test Martindale	100 000 T
Poids ML	420 g
Code feu	EN1021-1&2

LELIEVRE

PARIS



LELIEVRE

PARIS

Coloris disponibles



0638-01
TAÏGA - NATUREL



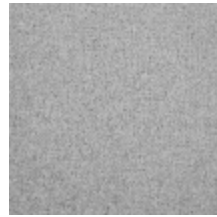
0638-02
TAÏGA - ECRU



0638-03
TAÏGA - NEIGE



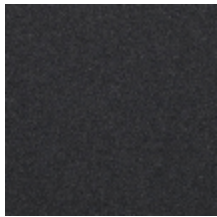
0638-04
TAÏGA - PERLE



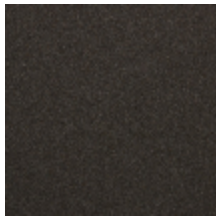
0638-05
TAÏGA - BRUME



0638-06
**TAÏGA -
CHARTREUX**



0638-07
TAÏGA - FUSAIN



0638-08
TAÏGA - VISON



0638-09
TAÏGA - OURS



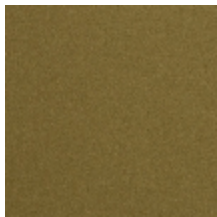
0638-10
**TAÏGA -
CHAMOIS**



0638-11
TAÏGA - CAMEL



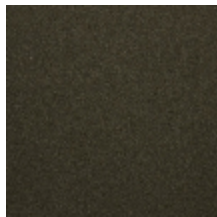
0638-12
TAÏGA - BLÉ



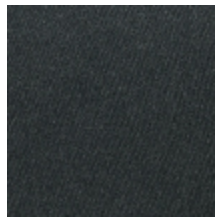
0638-13
TAÏGA - ANIS



0638-14
TAÏGA - FORÊT



0638-15
TAÏGA - KAKI



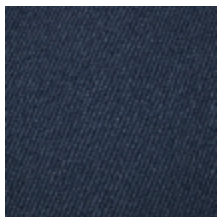
0638-16
TAÏGA - CÈDRE



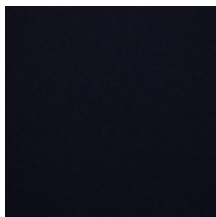
0638-17
TAÏGA - SAUGE



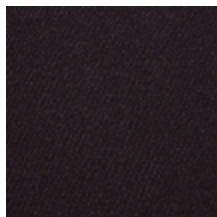
0638-18
TAÏGA - AZUR



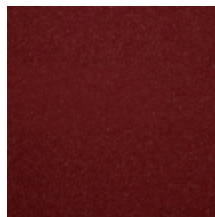
0638-19
TAÏGA - DENIM



0638-20
TAÏGA - MARINE



0638-21
**TAÏGA -
AUBERGINE**



0638-22
TAÏGA - PIMENT



0638-23
TAÏGA - SAFRAN

TAÏGA - CHAMOIS

0638-10

