

## KYRIELLE - CEDRE

0652-11



Fabriqué dans la manufacture Lelièvre, ce jacquard faux unis impressionne par sa technique avec, en trame, un fil légèrement irisé - doré, cuivré ou poudré - pour un rendu scintillant donnant l'impression d'une douce pluie.

---

Collection	L'ENVOLÉE FANTASTIQUE
------------	-----------------------

---

Marque	LELIEVRE
--------	----------

---

## FICHE TECHNIQUE

---

Composition	Coton 56% - Polyester 26% - Polyamide 9% - PC 9%
-------------	---

---

Largeur	142 cm
---------	--------

---

Coupe au raccord	Non
------------------	-----

---

Raccord vertical	16 cm
------------------	-------

---

Raccord horizontal	18 cm
--------------------	-------

---

Raccord sauté	Non
---------------	-----

---

Entretien	   
-----------	---

---

Utilisations	   
--------------	---

---

Test Martindale	40 000 T
-----------------	----------

---

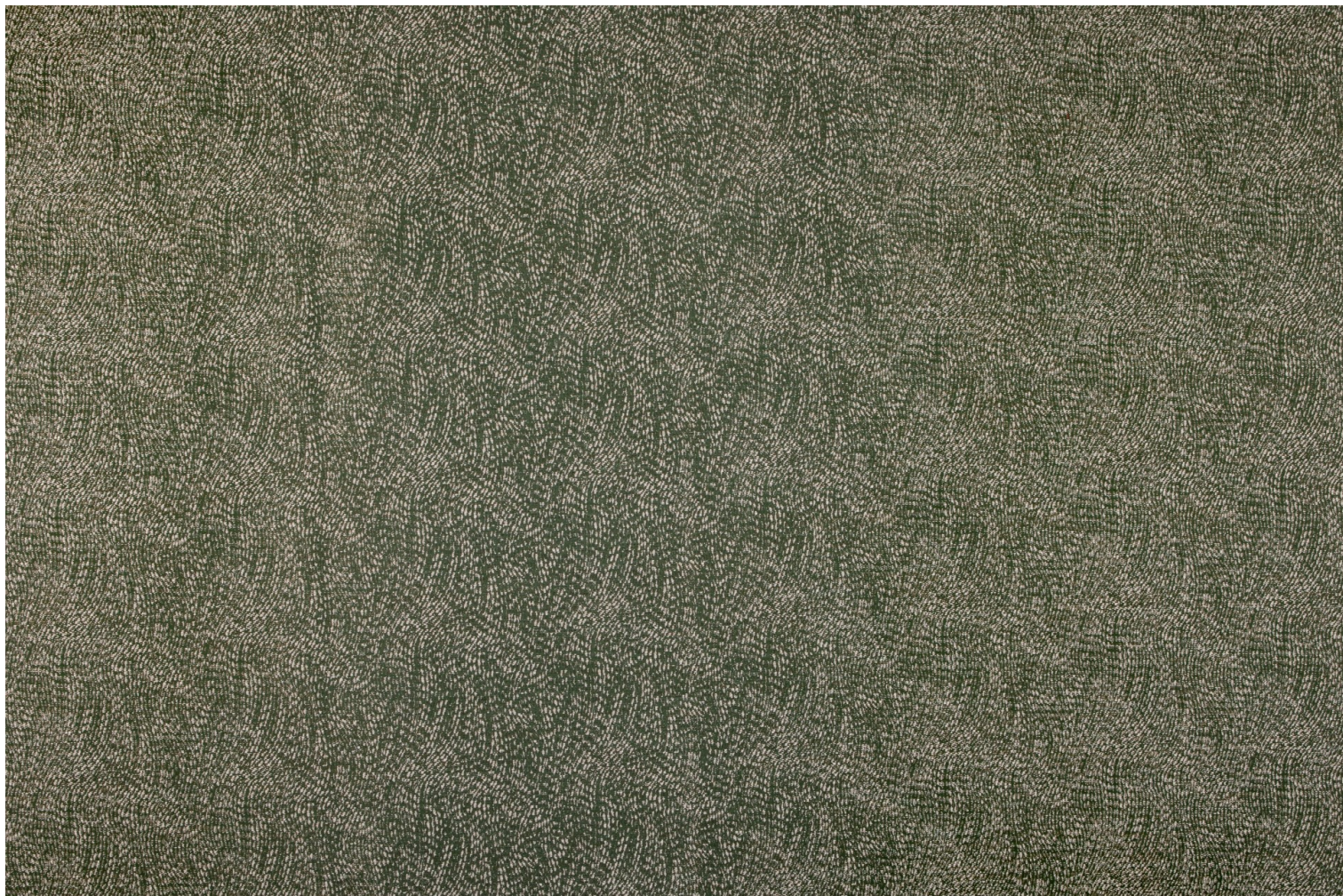
Poids ML	585 g
----------	-------

---



LELIEVRE

PARIS





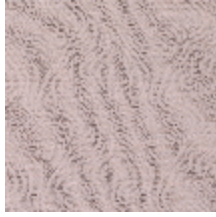
# LELIEVRE

PARIS

## Coloris disponibles



0652-01  
**KYRIELLE -  
ECUME**



0652-02  
**KYRIELLE -  
POUDRE**



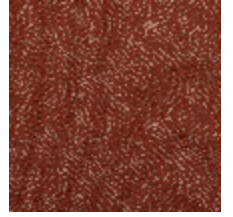
0652-03  
**KYRIELLE - DORE**



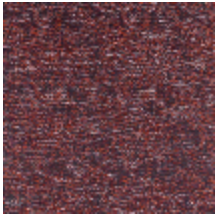
0652-04  
**KYRIELLE - MIEL**



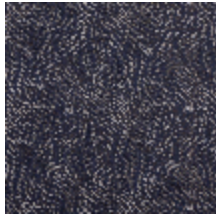
0652-05  
**KYRIELLE -  
AMBRE**



0652-06  
**KYRIELLE -  
TERRACOTTA**



0652-07  
**KYRIELLE - FIGUE**



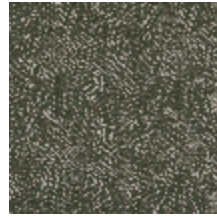
0652-08  
**KYRIELLE -  
INDIGO**



0652-09  
**KYRIELLE -  
GRAPHITE**



0652-10  
**KYRIELLE - JADE**



0652-11  
**KYRIELLE - CEDRE**



**KYRIELLE - CEDRE**

0652-11

