

**ALULA - BLUSH**

0656-03



On appelle "alula" une partie du plumage de l'aile d'un oiseau. Ce petit jacquard, inspiré des plumages graphiques du grand jacquard, a été conçu et travaillé en camaïeu multicolore pour donner un effet de plume stylisée. 6 coloris : naturel, céladon, blush, sauge, indigo, ambre.

---

Collection	L'ENVOLÉE FANTASTIQUE
------------	-----------------------

---

Marque	LELIÈVRE
--------	----------

---

## FICHE TECHNIQUE

---

Composition	Polyester 68% - Coton 26% - Polyamide 6%
-------------	---

---

Largeur	145 cm
---------	--------

---

Coupe au raccord	Non
------------------	-----

---

Raccord vertical	7 cm
------------------	------


---

Raccord horizontal	9 cm
--------------------	------


---

Raccord sauté	Non
---------------	-----

---

Entretien	   
-----------	---

---

Utilisations	   
--------------	---

---

Test Martindale	40 000 T
-----------------	----------

---

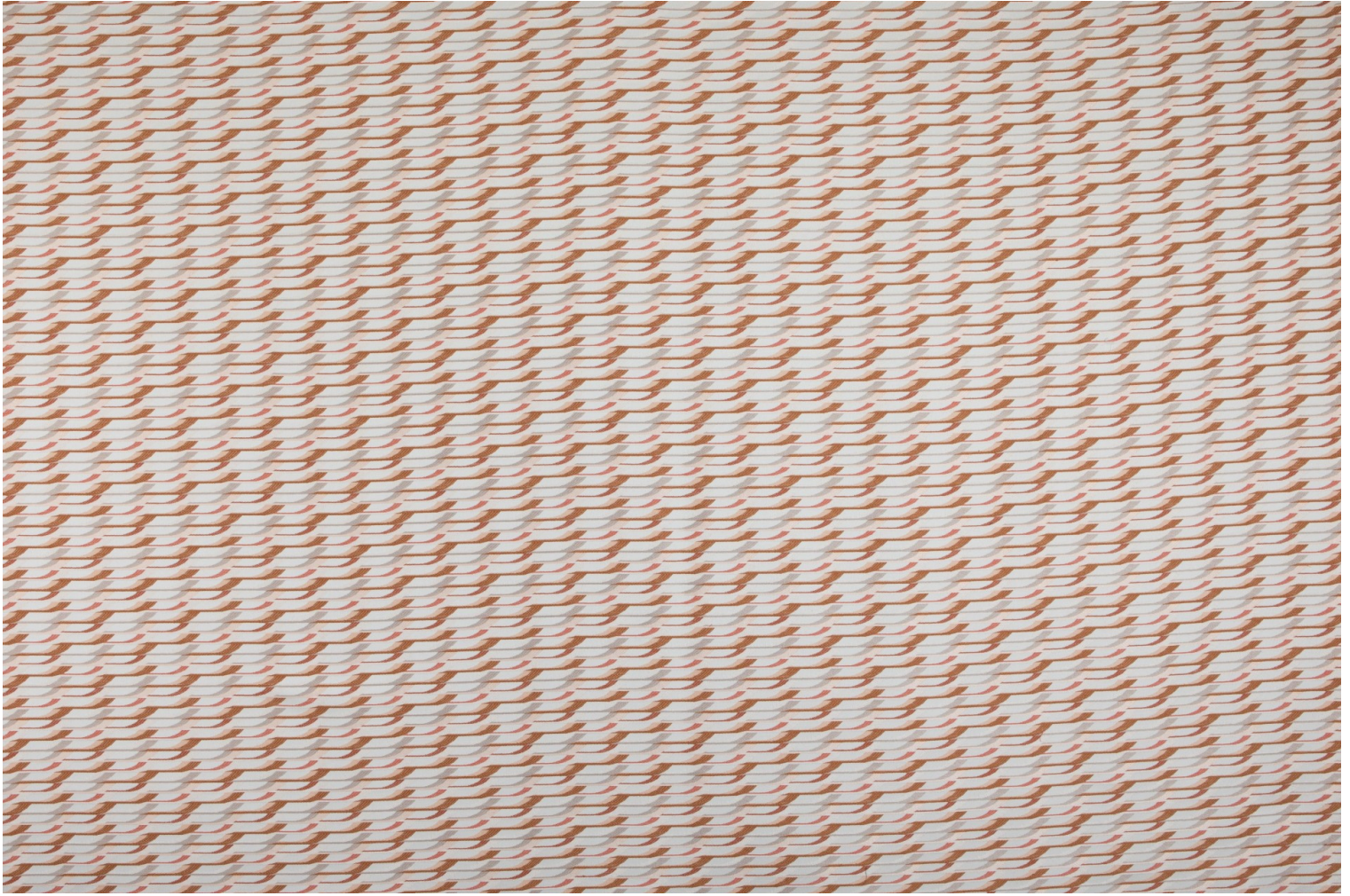
Poids ML	800 g
----------	-------

---



# LELIEVRE

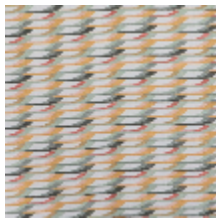
PARIS



## Coloris disponibles



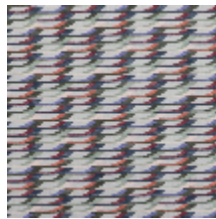
0656-01  
**ALULA - NATUREL**



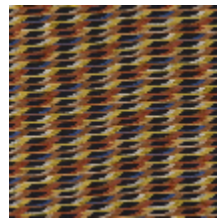
0656-02  
**ALULA -  
CELADON**



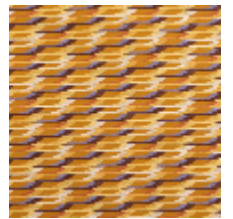
0656-03  
**ALULA - BLUSH**



0656-04  
**ALULA - SAUGE**



0656-05  
**ALULA - INDIGO**



0656-06  
**ALULA - AMBRE**



**ALULA - BLUSH**

0656-03

