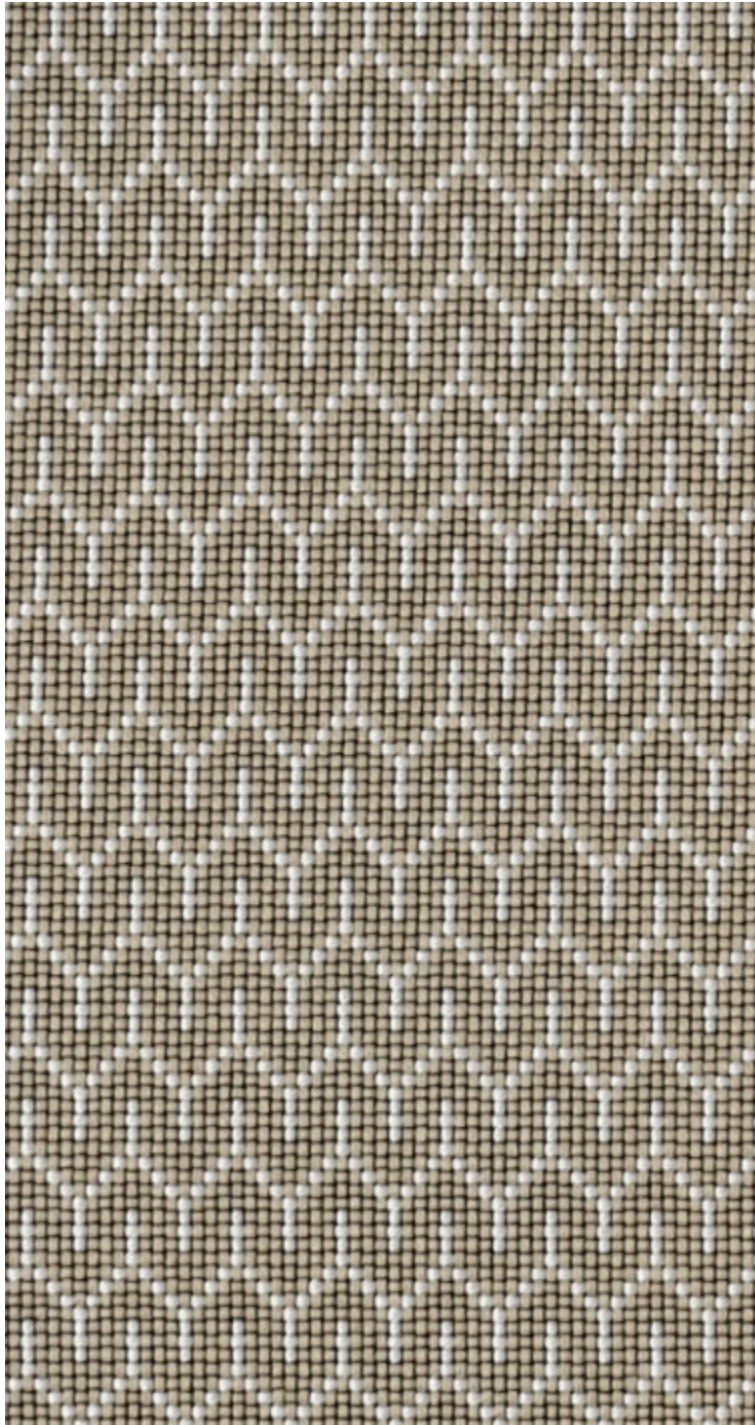


# LELIEVRE

PARIS

## STRADA - EMAIL \*

0724-01



Interprété à la manière d'un point de tapisserie, un petit graphisme de chevrons hérissés anime en couleurs ce tissu siège passe-partout. Ludique et tonique il n'en reste pas moins très pratique grâce à sa forte résistance de 50 000 tours Martindale.

Collection **COLLECTION 19**

Marque **LELIÈVRE PARIS CONTRACT**

### FICHE TECHNIQUE

Type **Faux uni**

Composition **Polyester TREVIRA CS 100%**

Largeur **140 cm**

Coupe au raccord **Non**

Raccord vertical **2 cm**

Raccord horizontal **2 cm**

Raccord sauté **Non**

Entretien   

Utilisations   

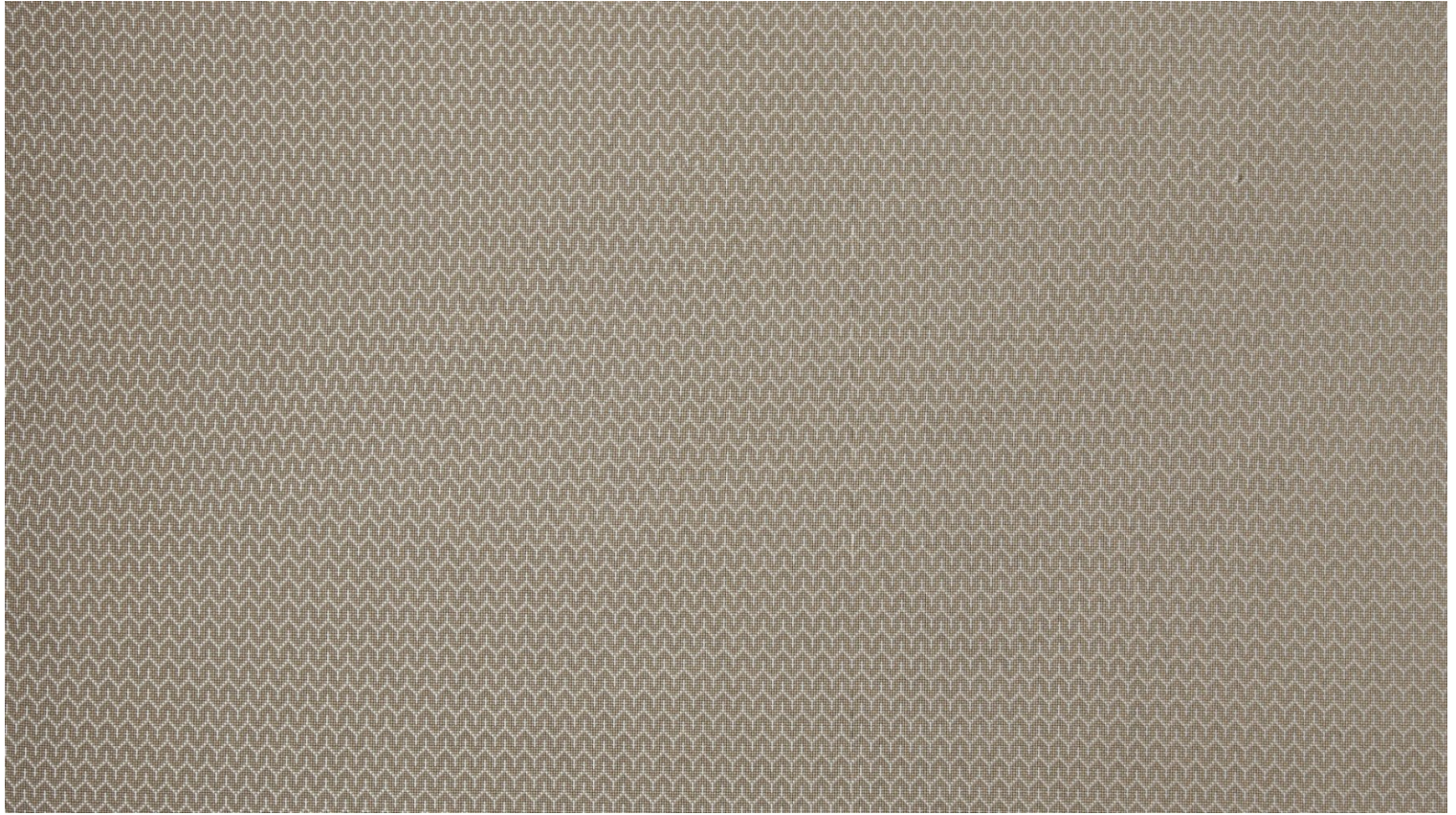
Test Martindale **50 000 T**

Poids ML **893 g**

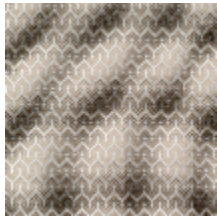
Code feu **M1 - IMO PART 7&8**

# LELIEVRE

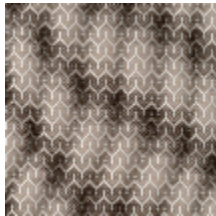
PARIS



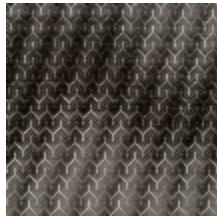
## Coloris disponibles



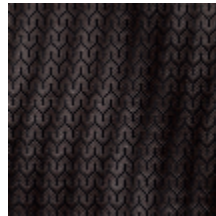
0724-01  
**STRADA - EMAIL \***



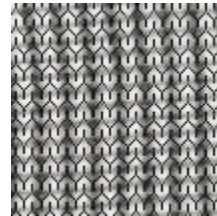
0724-02  
**STRADA -  
NATUREL \***



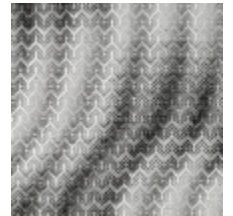
0724-03  
**STRADA - PLOMB  
\***



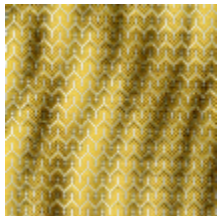
0724-05  
**STRADA - BOIS \***



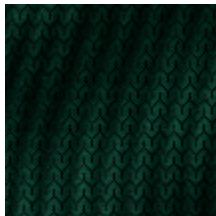
0724-06  
**STRADA - POIVRE  
\***



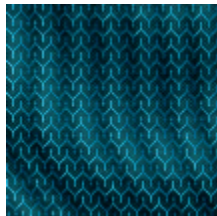
0724-07  
**STRADA -  
ARGENT \***



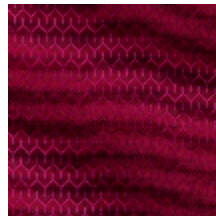
0724-09  
**STRADA - SOLEIL  
\***



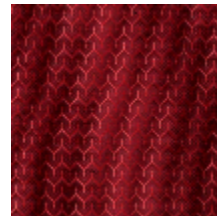
0724-11  
**STRADA - SAPIN  
\***



0724-12  
**STRADA - LAGON  
\***



0724-14  
**STRADA -  
FRAMBOISE \***



0724-15  
**STRADA -  
COQUELICOT \***



0724-16  
**STRADA - CUIVRE  
\***

# LELIEVRE

PARIS

## STRADA - EMAIL \*

0724-01

