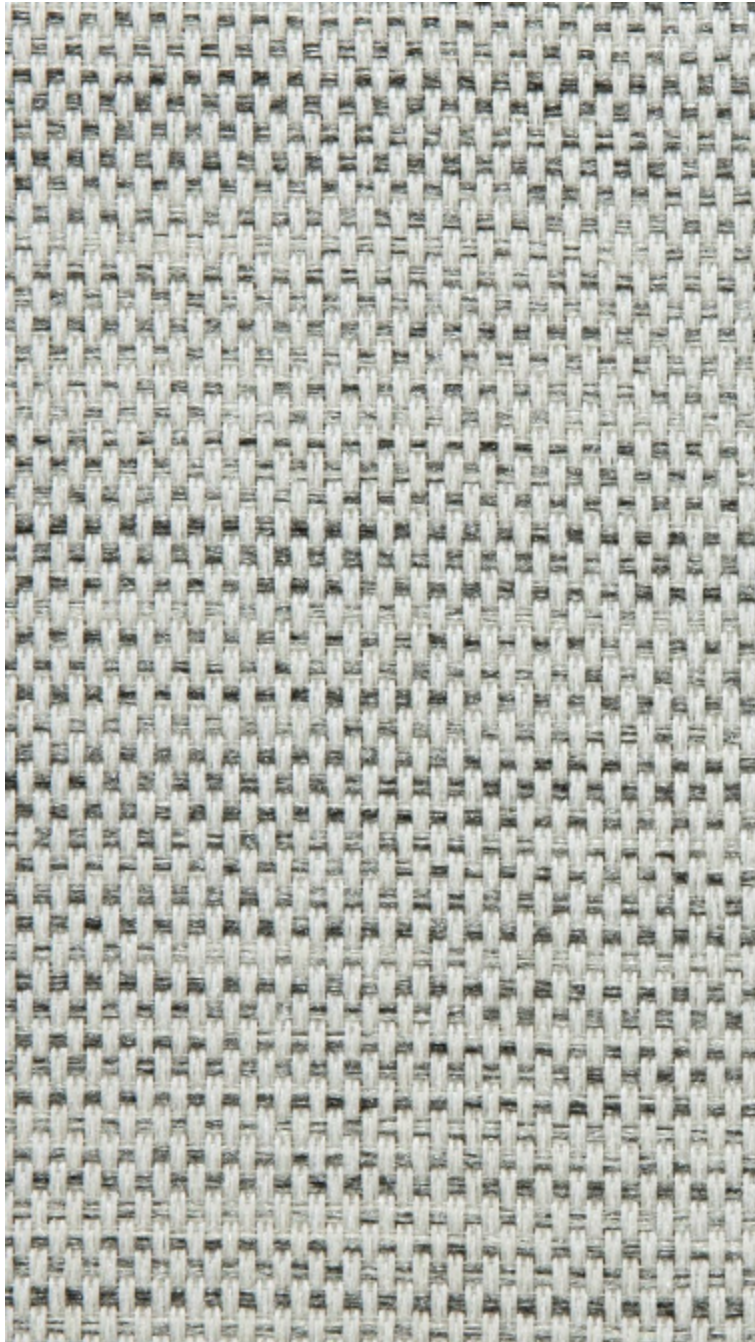


# LELIEVRE

PARIS

## DOLCE VITA M1 - POIVRE \*

1368-02



Luxury and voluptuousness from this airy voile woven in double width perfect for windows of all heights. It lends softness and warmth for an elegant and cosy feel. The blend of marled threads create a natural, wool effect. The combination of its gossamer structure and fine weave create a supple and light drape. Depending on the height of the windows it can be railroaded or used across the width. Easy to wash.

Collection **CONTRACT 24**

Brand **LELIEVRE CONTRACT**

### TECHNICAL DATA

Composition **Polyester TREVIRA CS 100%**

Width **325 cm**

Repeat cut **No**

Drop match **No**

Care 

Uses 

Weight / Linear metre **666 g**

Fire rating **M1**

# LELIEVRE

PARIS

**DOLCE VITA M1 - POIVRE \***

1368-02

