

MESANGES - BLEU

1505-01



A lampas, rewoven for the chairs and screens in the Portrait Gallery of the Palais de l'Elysée, used on the gilded furniture in the room where the President of the Republic receives guests. A large central motif comprising a bouquet of roses surrounded by drapes, bows and garlands of flowers, with a dove on a swing under a canopy.

Collection **PATRIMOINE**

Brand **TASSINARI & CHATEL**

TECHNICAL DATA

Composition **Silk 100%**

Width **65 cm**

Repeat cut **Yes**

Vertical repeat **65 cm**

Drop match **No**

Care    

Uses    

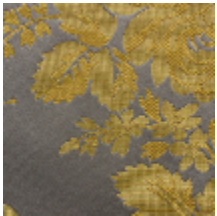
Weight / Linear metre **135 g**

LELIEVRE

PARIS



Available colours



1505-01
**MESANGES -
BLEU**



1505-03
**MESANGES -
ROUGE**



1505-05
**MESANGES -
VERONESE**

LELIEVRE

PARIS

MESANGES - BLEU

1505-01

