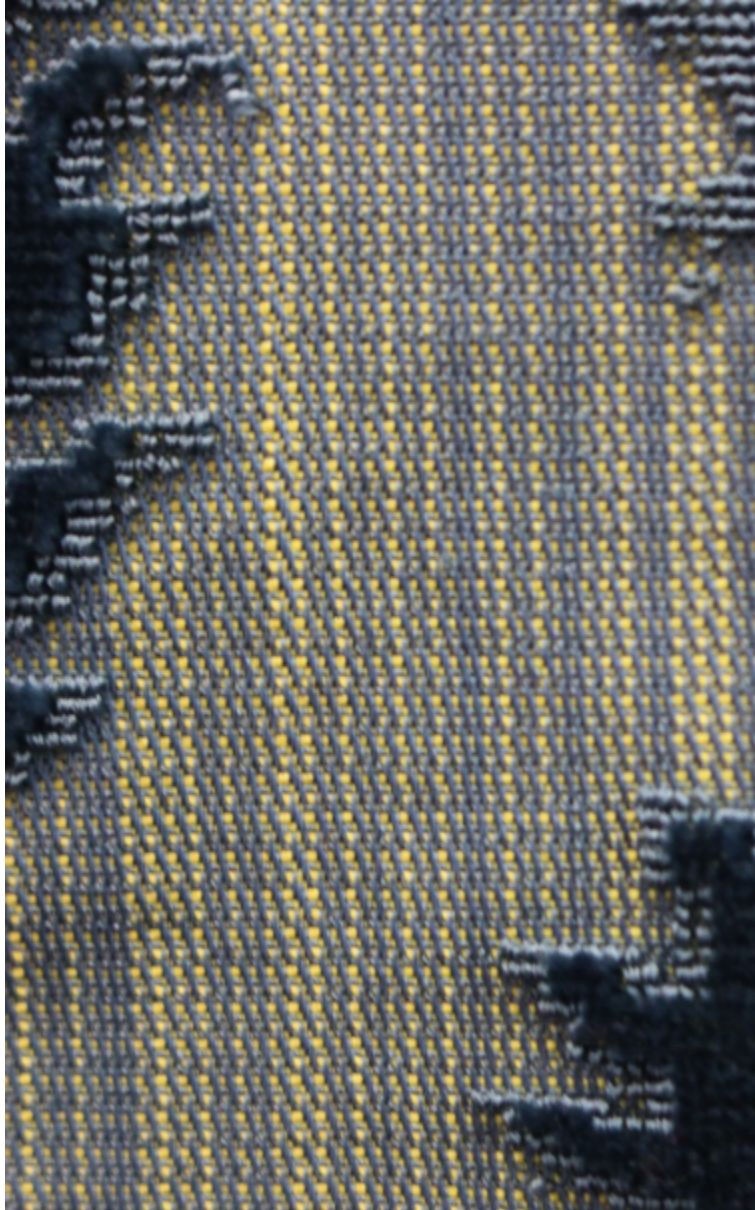


**DUCHESSE ANNE - BLEU**

1507-01



A 100% silk hand-loomed Genovese cut and uncut velvet. An overall floral motif on a lace-like background framed by feathery leaves and flowers. This design could be considered one of the so-called « lace-style » motifs that were all the rage at the beginning of the 18th century.

Collection	PATRIMOINE
------------	------------

Brand	TASSINARI & CHATEL
-------	--------------------

## TECHNICAL DATA

Composition	Silk 100%
-------------	-----------

Width	54 cm
-------	-------

Repeat cut	Yes
------------	-----

Vertical repeat	66 cm
-----------------	-------

Drop match	No
------------	----

Care	
------	--

Uses	
------	--

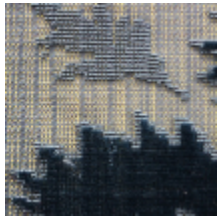
Weight / Linear metre	135 g
-----------------------	-------

# LELIEVRE

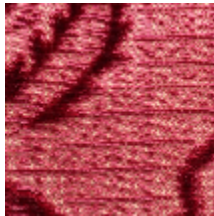
PARIS



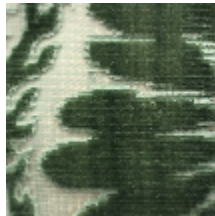
## Available colours



1507-01  
**DUCHESSE ANNE**  
- BLEU



1507-02  
**DUCHESSE ANNE**  
- ROUGE



1507-03  
**DUCHESSE ANNE**  
- VERT

**DUCHESSE ANNE - BLEU**

1507-01

