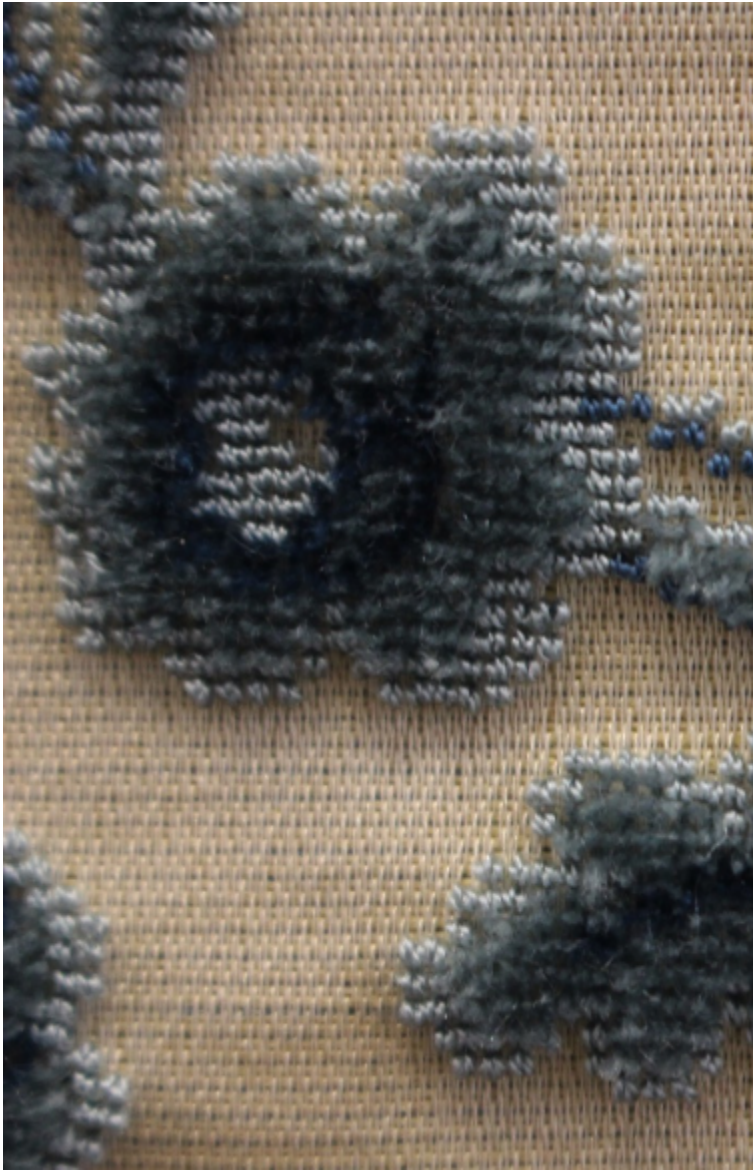


LELIEVRE

PARIS

CHOISEUL - BLEU

1509-01



A hand-loomed Genovese velvet on an ivory satin ground comprising a smallish central carnation framed by a trellis of flowers and leaves. These designs of trellis and foliage are typical of those used in the 18th century.

Collection **PATRIMOINE**

Brand **TASSINARI & CHATEL**

TECHNICAL DATA

Composition **Silk 63% - Cotton 37%**

Width **70 cm**

Repeat cut **No**

Vertical repeat **16 cm**

Drop match **No**

Care

Uses

Weight / Linear metre **285 g**

LELIEVRE

PARIS



Available colours



1509-01

CHOISEUL - BLEU



1509-02

CHOISEUL - ROSE



1509-03

CHOISEUL - VERT

CHOISEUL - BLEU

1509-01

