

LELIEVRE

PARIS

SAINT CLOUD - BLEU *

1527-01



An embroidered style lampas on a damask ground. A centrally focused composition of roses, buds and foliage framed by twigs intertwined with roses and leaves. These undulating compositions were very widespread between 1740 and 1760.

Collection **PATRIMOINE**

Brand **TASSINARI & CHATEL**

TECHNICAL DATA

Composition **Silk 100%**


Width **130 cm**

Repeat cut **No**

Vertical repeat **37 cm**

Drop match **No**

Care    

Uses    

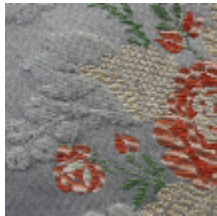
Weight / Linear metre **395 g**

LELIEVRE

PARIS



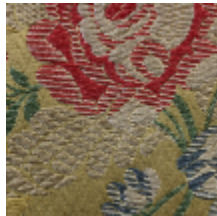
Available colours



1527-01
**SAINT CLOUD -
BLEU ***



1527-02
**SAINT CLOUD -
CREME**



1527-03
**SAINT CLOUD -
JAUNE**



1527-04
**SAINT CLOUD -
ROUGE**



1527-05
**SAINT CLOUD -
VERT**

SAINT CLOUD - BLEU *

1527-01

