

LELIEVRE

PARIS

COURONNE DE ROSES-CANNELLE *

1532-08



A large double rosette in the Louis XVI style. A richly decorated basket of roses, carnations, bluebells and foliage encircled by a garland of roses and another of flowers and ribbons. A new lease of life is breathed into this great classic with an elegant new colour range, deep sophisticated red, crimson and brown, soft and feminine gold, ivory, taupe and amethyste.

Collection	PATRIMOINE
------------	------------

Brand	TASSINARI & CHATEL
-------	--------------------

TECHNICAL DATA

Composition	Cotton 71% - Silk 29%
-------------	-----------------------

Width	130 cm
-------	--------

Repeat cut	Yes
------------	-----

Vertical repeat	65 cm
-----------------	-------

Drop match	No
------------	----

Care	   
------	---

Uses	   
------	---

Weight / Linear metre	230 g
-----------------------	-------

LELIEVRE

PARIS

Available colours



1532-08
**COURONNE DE
ROSES-
CANNELLE ***



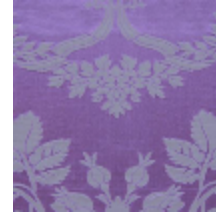
1532-21
**COURONNE DE
ROSES-ROUGE**



1532-22
**COURONNE DE
ROSES-POURPRE**



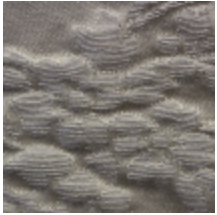
1532-23
**COURONNE DE
ROSES-LAVANDE**



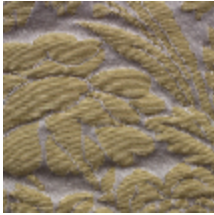
1532-24
**COURONNE DE
ROSES-
AMÉTHYSTE**



1532-25
**COURONNE DE
ROSES-TAUPE**



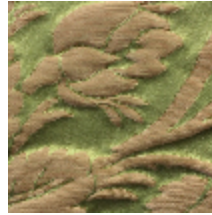
1532-26
**COURONNE DE
ROSES-IVOIRE**



1532-27
**COURONNE DE
ROSES-DORE**



1532-28
**COURONNE DE
ROSES-OR**



1532-29
**COURONNE DE
ROSES-VERT**



1532-30
**COURONNE DE
ROSES-BRUN**

COURONNE DE ROSES-CANNELLE *

1532-08

