

LELIEVRE

PARIS

DAVOUT - BLEU *

1540-01



The pattern, composed of two motifs with scattered rosettes, personalises the chairs. The first, a quiver framed by a laurel wreath, is for the back of the chair and the larger motif for the seat is a rosette encircled by acanthus leaves.

Collection	PATRIMOINE
------------	------------

Brand	TASSINARI & CHATEL
-------	--------------------

TECHNICAL DATA

Type	Damasks & Lampas
------	------------------


Composition	Silk 100%
-------------	-----------

Width	130 cm
-------	--------

Repeat cut	Yes
------------	-----

Vertical repeat	149 cm
-----------------	--------

Half drop match	No
-----------------	----

Care	  
------	---

Uses	   
------	---

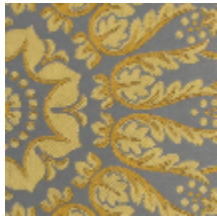
Weight / Linear metre	190 g
-----------------------	-------

LELIEVRE

PARIS

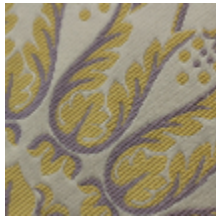


Available colours



1540-01

DAVOUT - BLEU *



1540-02

DAVOUT - CREME

*



1540-05

DAVOUT - VERT *

LELIEVRE

PARIS

DAVOUT - BLEU *

1540-01

