

# LELIEVRE

PARIS

## DAVOUT SEME - BLEU \*

1541-01



A regular composition of small rosettes which is the background fabric to the Davout seat and back panel, made up of two large motifs one of a quiver framed by laurel branches and the other a large rosette based on acanthus leaves.

---

Collection	PATRIMOINE
------------	------------

---

Brand	TASSINARI & CHATEL
-------	--------------------

---

### TECHNICAL DATA

---

Composition	Silk 100%
-------------	-----------

---

Width	130 cm
-------	--------

---

Repeat cut	No
------------	----

---

Vertical repeat	12 cm
-----------------	-------

---

Drop match	No
------------	----

---

Care	   
------	---

---

Uses	   
------	---

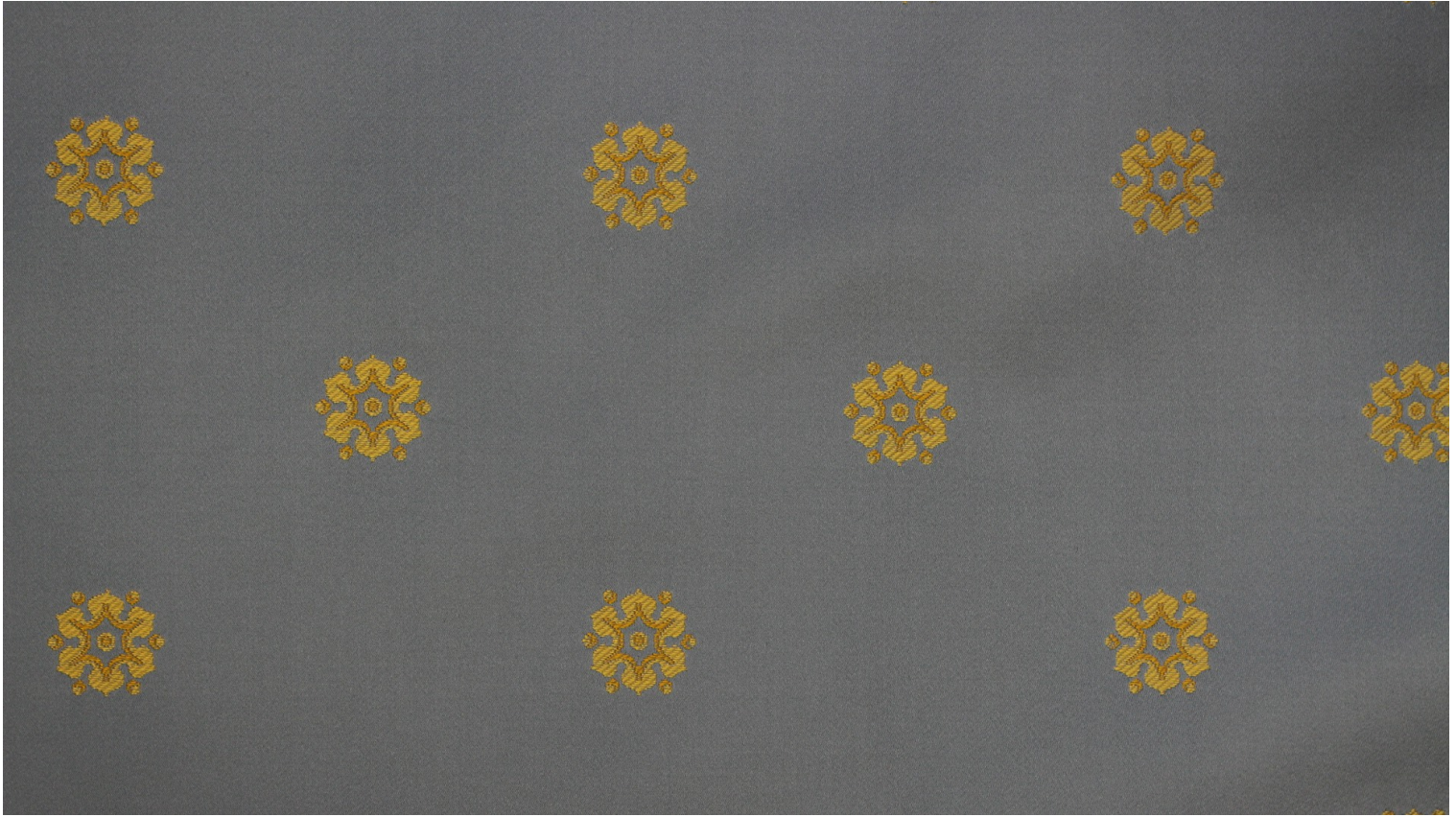
---

Weight / Linear metre	275 g
-----------------------	-------

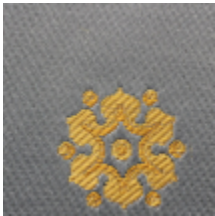
---

# LELIEVRE

PARIS



## Available colours



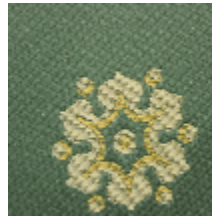
1541-01  
**DAVOUT SEME -  
BLEU \***



1541-02  
**DAVOUT SEME -  
CREME \***



1541-03  
**DAVOUT SEME -  
JAUNE \***



1541-05  
**DAVOUT SEME -  
VERT \***

**DAVOUT SEME - BLEU \***

1541-01

