

LELIEVRE

PARIS

RHEA - PERVENCHE

1542-01



A striped lampas decorated with a river design and posies, this fabric in the Louis XV or Louis XVI style can be used for upholstery, curtains or walling.

Collection PATRIMOINE

Brand TASSINARI & CHATEL

TECHNICAL DATA


Composition Viscose 67% - Cotton 33%

Width 130 cm

Repeat cut No

Vertical repeat 29 cm

Drop match No

Care    

Uses    

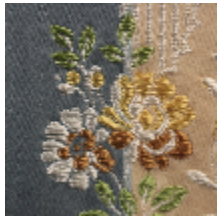
Weight / Linear metre 375 g

LELIEVRE

PARIS



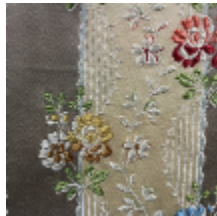
Available colours



1542-01
**RHEA -
PERVENCHE**



1542-03
**RHEA -
JONQUILLE**



1542-06
**RHEA - TAUPE
CLAIR**

RHEA - PERVENCHE

1542-01

