

LELIEVRE

PARIS

ALEXANDRA - ROSE/CREME *








1549-07



A half drop repeat damask with motifs of bouquets of flowers in a shell vase framed by feathers, trimmings, lace and draperies on a background of vertical dashes. Napoleon III décor copied previous styles with great extravagance. The designs also imitated the medieval, Renaissance (Henri II), Louis XIV, Louis XV and Louis XVI periods. As a result the main characteristic of the Napoleon III style is heavy decor, abundant use of braiding and a taste for strong colours (black and purple...).

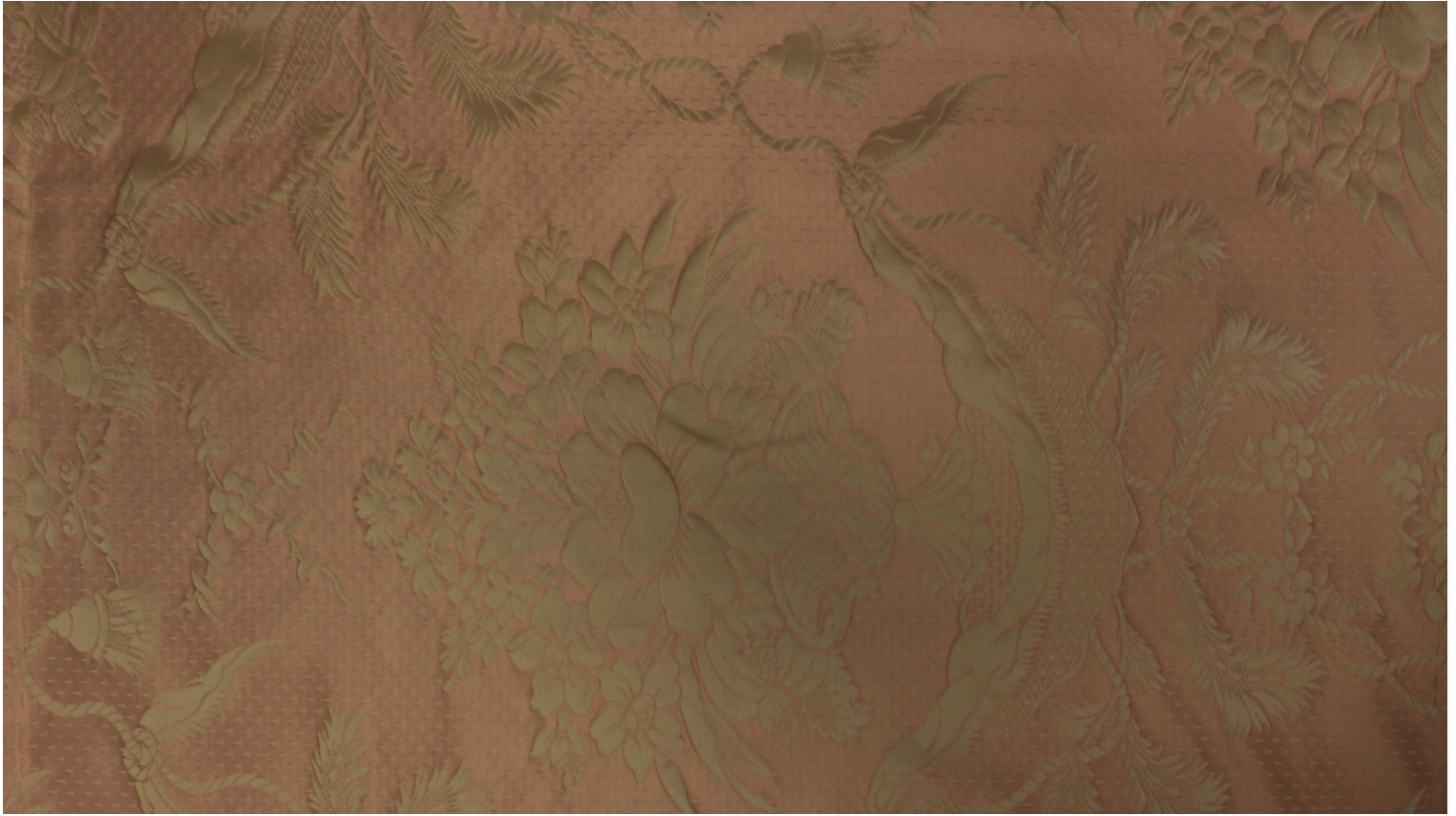
Collection	PATRIMOINE
Brand	TASSINARI & CHATEL

TECHNICAL DATA

Composition	Cotton 71% - Silk 29%
Width	130 cm
Repeat cut	Yes
Vertical repeat	83 cm
Drop match	No
Care	   
Uses	   
Weight / Linear metre	230 g

LELIEVRE

PARIS



Available colours



1549-07
**ALEXANDRA -
ROSE/CREME ***



1549-20
**ALEXANDRA - OR



1549-26
**ALEXANDRA -
ROUGE/OR ***



1549-27
**ALEXANDRA -
BLEU ***



1549-28
**ALEXANDRA -
CREME/OR ***



1549-40
**ALEXANDRA -
MARINE ***

ALEXANDRA - ROSE/CREME *

1549-07

